

Mandorah marine facilities upgrade

Project update

New marine facilities are being constructed at Mandorah to improve and maintain public transport services for residents and visitors to Mandorah, Wagait Beach and Belyuen.

The new facilities include a new boat ramp, toilet facilities, car park upgrades and an improved experience for ferry users. Importantly, it will also provide better access for people with disabilities.

Design

The project team and SMC Marine have been working with SeaLink to ensure the new design meets the requirements and vessel design for the ferry service.

Benefits of the design include, delivering on the key priorities and general masterplan outcomes, and:

- creating a smaller footprint to work within existing geological features
- reduces environmental impact
- enables breakwaters to be built without dredging first
- floating pontoon is compliant with *Disability Discrimination Act (DDA)* and provides safe access for people with disability
- boat ramp located away from ferry berthing pontoon to separate the boat ramp traffic from ferry traffic
- boat ramp will have dedicated car parks separate to the general ferry terminal car parks, which allows for more disability access car parks near the ferry terminal
- ferry facilities are closer to the ferry terminal
- shortened access to the ferry via a direct path from terminal
- aligning the southern breakwater to provide calmer conditions for the ferry.



An existing building near the new marine facilities is being repurposed to provide a ferry terminal with shelter from the elements and public toilets.

A scaled physical model of the design (see image right) has been completed at the Manly Hydraulics laboratory to test the breakwater design against a range of settings include cyclonic wave and tide conditions and ensure that the design is fit for purpose.



Navigation simulation has also been completed for the new marine facilities to ensure it is fit for purpose to suit a wide range of vessel types, including ferry vessels. Conducted by the Northport Simulation Centre, this involved a full bridge simulation to test navigation of the ferry in a range of wind, storm and tidal conditions.

The simulation showed a 27 metre vessel, based on the current ferry, could manoeuvre in the turning basin under the simulated adverse conditions.

The design was presented to key stakeholders and as a result of their feedback the design will:

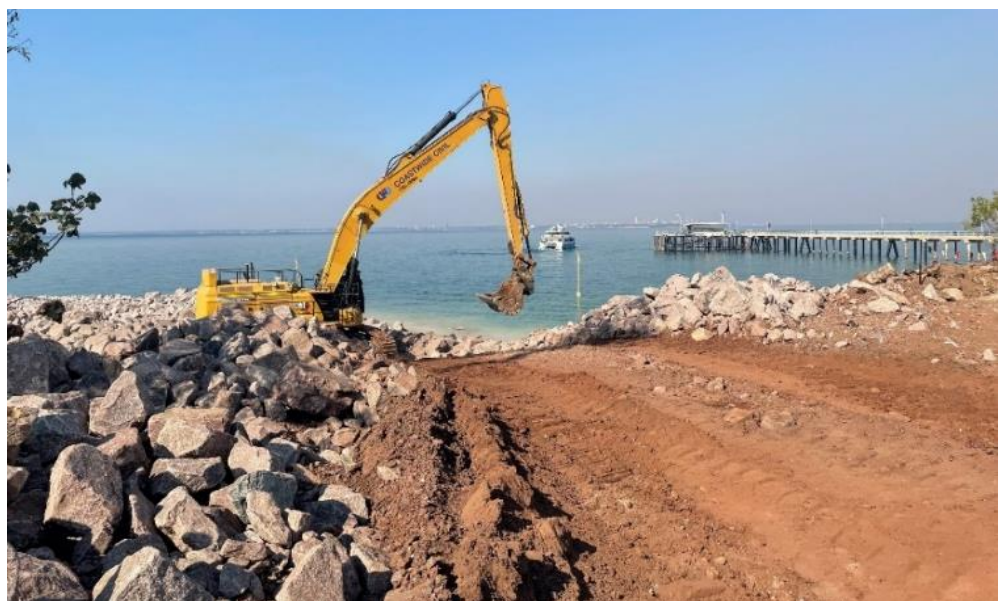
- consider more car parks near the ferry terminal to cater for future demand
- look at options to incorporate CCTV
- maximise shade on the floating pontoon
- include angular boat trailer parks
- increase access to accessible parking
- consider a DDA compliant accessible boat platform for the boat ramp.

Construction

Construction is being staged to enable additional dry season activities and program for the contractor to start site works sooner.

Anticipated timing of construction activity on site includes:

- **May 2024** – preparing the site, stockpiling quarry materials to enable staged construction for the project and commencing construction of the southern breakwater



Stakeholder Notice

- **July 2024** – construction commences on the northern breakwater
- **September 2024** – dredging commences
- **October 2024** – landside civil works commences.

The marine facilities are anticipated to be completed in mid-2025, weather permitting. Quarry materials are being brought into the project site by trucks along Cox Peninsula Road.

A temporary speed limit is now in place 1 km either side of the entrance to Belyuen, changing from 100 km/h to 80 km/h.



Access to some sections of the Mandorah Jetty car park area may be restricted during the works and regular updates will be provided on any potential construction impacts.

For more information visit

<https://infrastructure.nt.gov.au/project/mandorah-marine-facilities>.

If you have any queries please contact Darwin Harbour Infrastructure Projects via dhip.dipl@nt.gov.au or call 8936 5668.

Use the QR code to subscribe for updates on the Mandorah Marine Facilities project.