



# NORTHERN TERRITORY GOVERNMENT

## Construction Snapshot

### March 2015



Photo: Tiger Brennan Drive Duplication Project – Hidden Valley

The Department of Infrastructure publishes *Construction Snapshot* on a quarterly basis. The information provides an overview of the Northern Territory's construction activity for major works over \$500 000. It reflects work that is both currently underway and potential future construction-related work as at 31 March 2015.

**Table of Contents**

**IN PROGRESS** ..... 3

    Territory Wide ..... 3

    Central Australia ..... 3

    Barkly Region ..... 5

    Katherine Region ..... 6

    East Arnhem Region ..... 7

    Top End Rural ..... 9

    Palmerston and Litchfield ..... 9

    Darwin Environs ..... 11

**PROPOSED** ..... 13

    Territory Wide ..... 13

    Central Australia ..... 13

    Barkly Region ..... 14

    Katherine Region ..... 16

    East Arnhem Region ..... 17

    Top End Rural ..... 18

    Palmerston and Litchfield ..... 19

    Darwin Environs ..... 21

**DISCLAIMER** ..... 25

**CONTACT** ..... 25



Photo: East Arm - Common User Area

# IN PROGRESS

TERRITORY WIDE	Est \$M	Anticipated Completion
<b>DEFENCE PROJECTS</b>		
National Aircraft Pavement Maintenance Program - including RAAF Base Darwin, Robertson Barracks and RAAF Base Tindal	50.0	2020

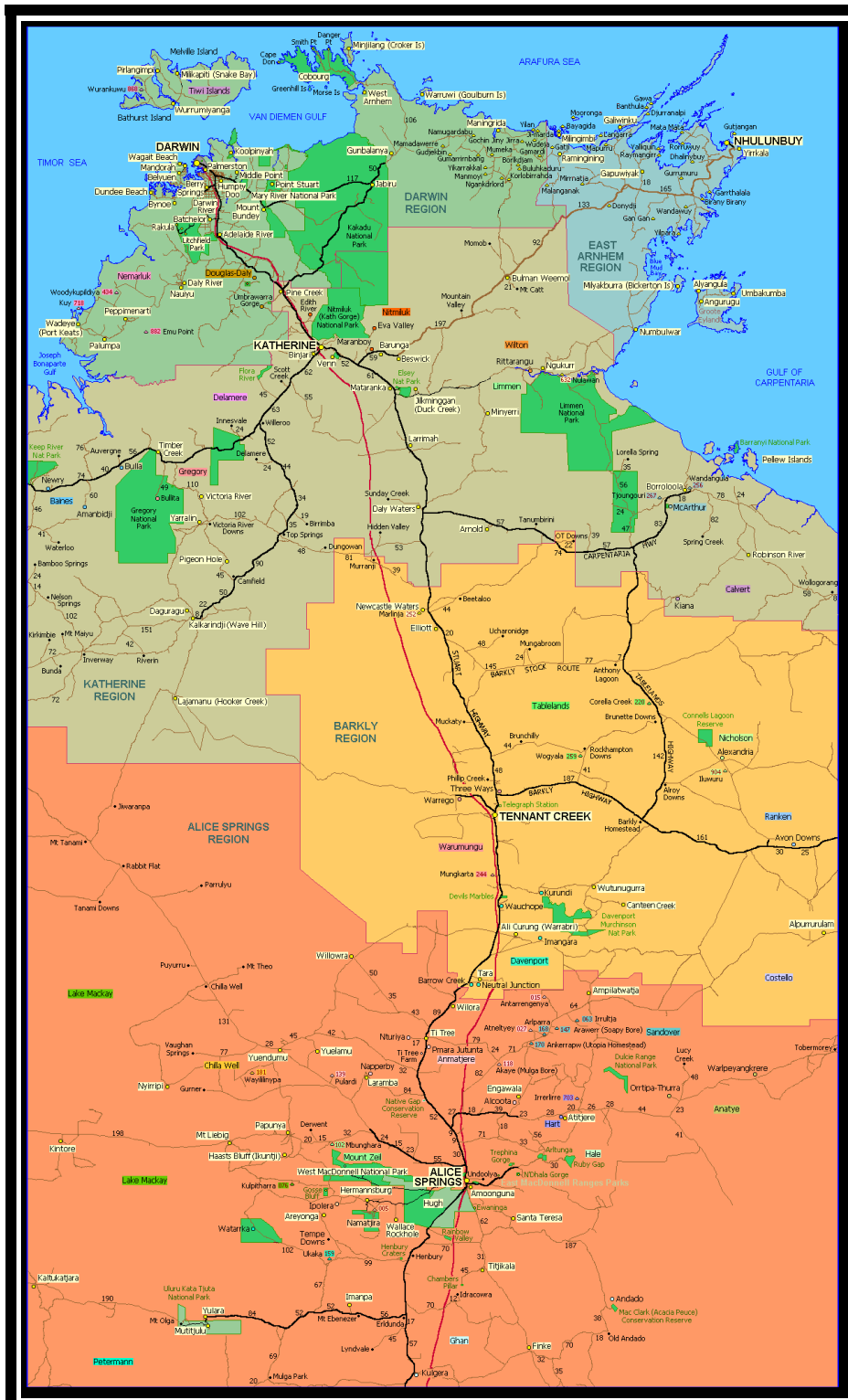




Photo: Tanami Road Upgrade

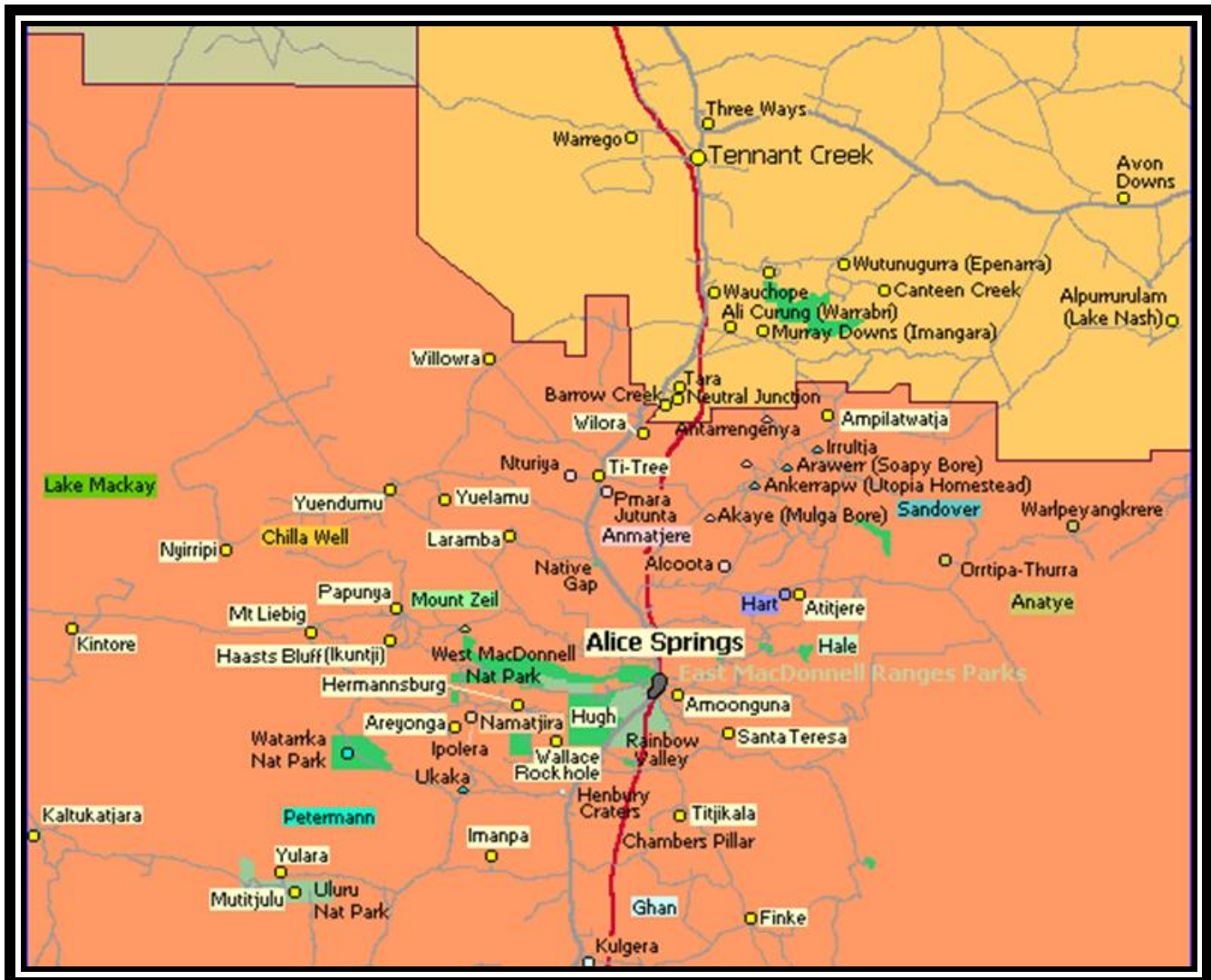
<b>CENTRAL AUSTRALIA</b>		<b>Est \$M</b>	<b>Anticipated Completion</b>
<b>NORTHERN TERRITORY GOVERNMENT PROJECTS</b>			
Kilgariff - land release 1A		1.9	Q2 2015
Alice Springs Police Station - Greatorex Building upgrade		9.0	Q2 2015
Santa Teresa Road - seal including Yam Creek		9.1	Q2 2015
Tanami Road - upgrade		3.3	Q2 2015
Utopia Airstrip - upgrade		4.0	Q2 2015
Papunya Health Clinic - upgrade		2.3	Q3 2015
Desert Knowledge - Sewer Pump Station		0.5	Q3 2015
Kaltukatjara - Health Clinic		2.6	Q4 2015
Titjikala - Health Clinic		2.5	Q4 2015
Lasseter Highway - seal widening the existing pavement sections from chainage 22.0 - 26.5km		1.0	Q4 2015



Photo: Utopia Airstrip Upgrade



CENTRAL AUSTRALIA (Cont)	Est \$M	Anticipated Completion
<b>POWER WATER CORPORATION PROJECTS</b>		
Alice Springs Water Smart - reuse water balance tank and treatment	6.4	Q2 2015
<b>MINING AND PETROLEUM SECTOR PROJECTS</b>		
Spinifex Bore - garnet sand surface mining and processing operation	14.4	Q2 2015
Twin Bonanza - stage 2 - develop new open-cut gold mine with ore trucked to off-site processing plant (WA)	5.0	Q2 2015
<b>PRIVATE SECTOR PROJECTS</b>		
Lots 8146 and 8147 Parsons Street, Alice Springs - new supreme court and office building	20.0	Q2 2016
<b>COMMONWEALTH GOVERNMENT PROJECTS</b>		
Yuendumu - multi-purpose Police Station	8.4	Q2 2015
Arlparra - multi-purpose Police Station and accommodation and visiting officers' quarters	8.4	Q2 2015
Ntaria - Child and Family Centre	1.8	Q3 2015

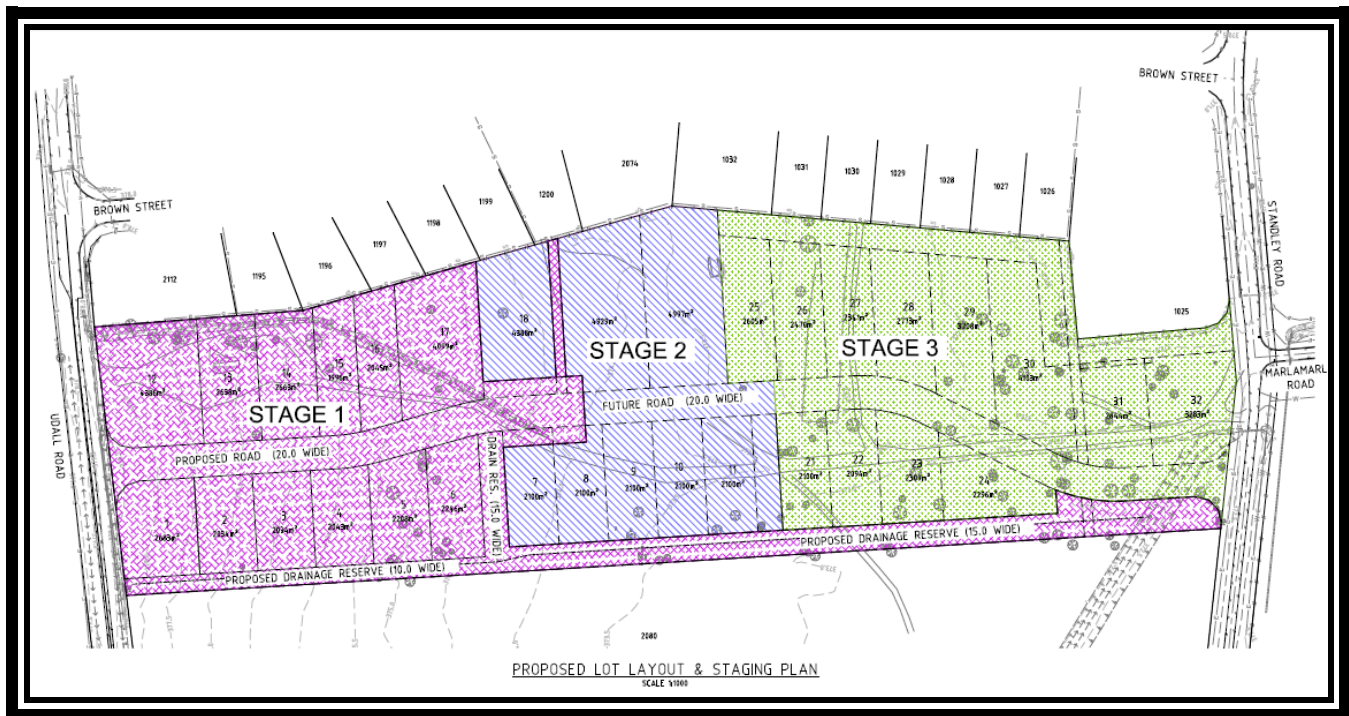


Map: Central Australian Region



Photo: Elliot Remote Health Clinic

BARKLY REGION	Est \$M	Anticipated Completion
<b>NORTHERN TERRITORY GOVERNMENT PROJECTS</b>		
Canteen Creek - Remote Health Clinic	4.2	Q3 2015
Elliott - Remote Health Clinic	5.2	Q3 2015
Tennant Creek - Udall and Peko Road land release	4.7	Q4 2015
<b>National Partnership Agreement on Remote Indigenous Housing (NPAIH)</b>		
Wutunugurra - remote housing, new builds and upgrades	6.2	Q4 2016
<b>PRIVATE SECTOR PROJECTS</b>		
Tennant Creek - Youth Accommodation	3.0	Q2 2015



Concept: Tennant Creek – Udall Road Land Release

KATHERINE REGION	Est \$M	Anticipated Completion
<b>NORTHERN TERRITORY GOVERNMENT PROJECTS</b>		
Hodgson River Road - install inverts chainage 5 - 76km	0.7	Q2 2015
Kalkarindji - land release	3.2	Q3 2015
Katherine District Hospital - replace emergency air-conditioning plant	1.9	Q3 2015
<b>Government Employee Housing (GEH)</b>		
Minyerri - construct housing	2.0	Q2 2015
<b>DEFENCE PROJECTS</b>		
Bradshaw Field Training area - Angarlarrri Crossing refurbishment	3.0	Q2 2015



Photos: Minyerri Government Employee Housing





Photo: Cyclone Clean Up



Photo: Maningrida Health Clinic

EAST ARNHEM REGION		Est \$M	Anticipated Completion
<b>NORTHERN TERRITORY GOVERNMENT PROJECTS</b>			
Cyclone Clean Up		7	Q2 2015
Gove District Hospital - replace air handling units		2.0	Q2 2015
Maningrida Health Clinic		1.7	Q2 2015
Shepherdson College - Remote School Attendance Strategy		0.9	Q2 2015
<b>Government Employee Housing (GEH)</b>			
Angurugu - construct housing		1.9	Q4 2015

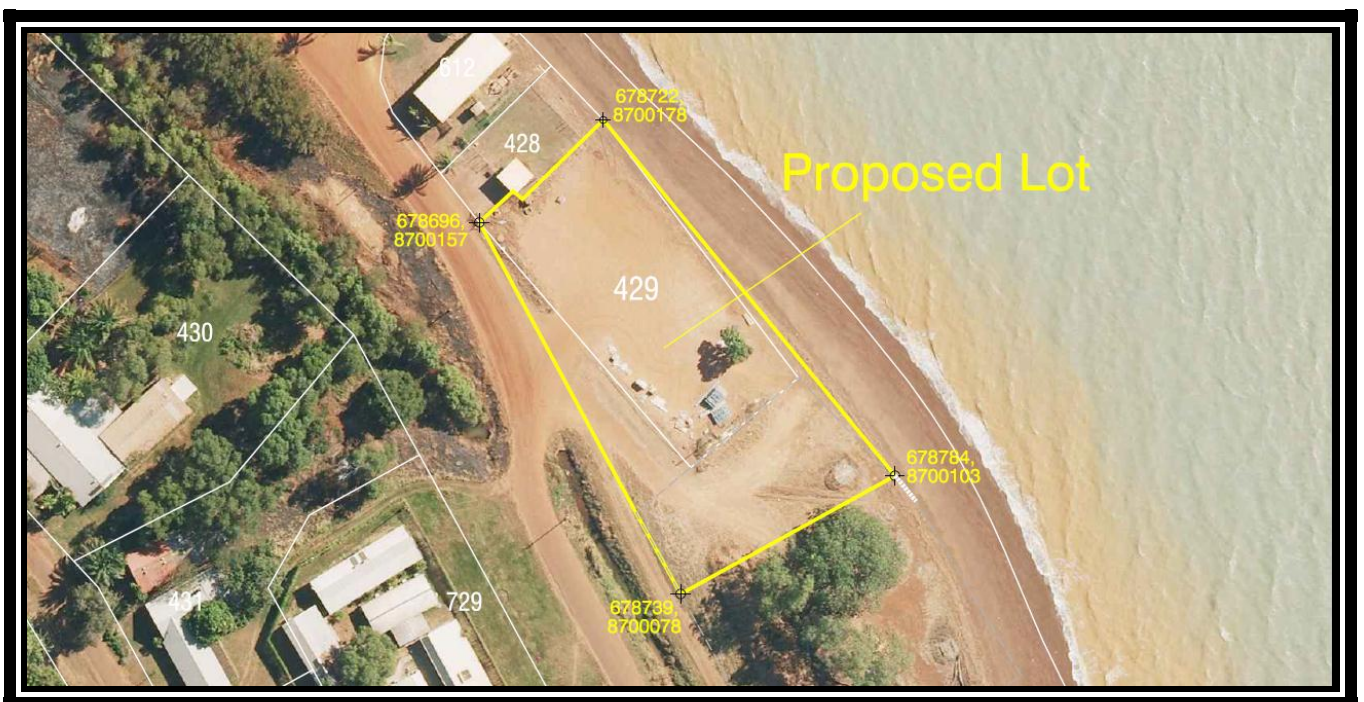


Photos: Angurugu Government Employee Housing





TOP END RURAL		Est \$M	Anticipated Completion
<b>NORTHERN TERRITORY GOVERNMENT PROJECTS</b>			
Rural - drainage upgrades	1.9	Q2 2015	
Pirlangimpi Police Station - refurbishment	1.4	Q2 2015	
Jungawa Road - upgrade seal chainage 3.0 - 4.3km	0.9	Q2 2015	
Namarada Drive - seal chainage 6.12 - 7.32km	0.9	Q2 2015	
Nguiu - barge landing upgrade	2.0	Q2 2015	
Batchelor Open Education Centre – dining hall	1.2	Q3 2015	
Port Keats Road - flood immunity	9.7	Q4 2015	
<b>POWER WATER CORPORATION PROJECTS</b>			
Adelaide River - water treatment plant upgrade	6.1	Q3 2015	



Photos: Nguiu Barge Landing (Wurrumiyanga)

<b>PALMERSTON AND LITCHFIELD</b>	<b>Est \$M</b>	<b>Anticipated Completion</b>
<b>NORTHERN TERRITORY GOVERNMENT PROJECTS</b>		
AAco Northern Beef Limited - access road	1.1	Q2 2015
East Arm - Common User Area - stage 2	5.0	Q2 2015
Stuart Highway and Temple Terrace Intersection Upgrade	10.0	Q3 2015
Litchfield Park Road - seal selected sections	4.9	Q4 2015



Photo: East Arm - Common User Area, stage 2

<b>PALMERSTON AND LITCHFIELD (Cont)</b>	<b>Est \$M</b>	<b>Anticipated Completion</b>
<b>Palmerston East</b>		
Palmerston East - Radford Road water main	1.0	Q3 2015
Palmerston East - Zuccoli western trunk sewer	3.2	Q3 2015
Palmerston East - Southern Connector Road and Mitchell Creek Bridge	2.5	Q4 2015
Palmerston East - Zuccoli west sewer pump station and rising main	6.2	Q4 2015
Palmerston East - Zuccoli subdivision - stage 2	40.0	Q2 2018
<b>COOPERATIVE PROJECTS</b>		
Marine Supply Base	115.0	Q2 2015
Palmerston Regional Hospital	150.0	Q3 2018
<b>POWER WATER CORPORATION PROJECTS</b>		
Strangways Zone - substation replacement	27.3	Q4 2015
<b>TERRITORY GENERATION PROJECTS</b>		
Channel Island Power Station - life extension	55.0	Q3 2017
<b>DEFENCE PROJECTS</b>		
Land 144 - countermine capability	0.8	Q2 2015
Robertson Barracks - Defence Logistics Transformation project	120.0	Q2 2015
<b>PRIVATE SECTOR PROJECTS</b>		
Coolalinga - Fairweather Apartments	TBA	Q2 2015
MacKillop Catholic College - stage 2B	4.0	Q2 2015
East Arm - Qube Ports - Oil and Gas Supply Base	20.0	Q3 2015
Johnson - Tarakan Court - hotel and mixed use development	TBA	Q1 2016
Gateway Shopping Centre	300.0	Q2 2016
Charles Darwin University - real estate sub-division	160.0	Q4 2018
<b>INPEX Icthyus LNG Project</b>		
INPEX - civil site preparation, major foundations and services	TBA	Q3 2016
INPEX - construct LNG tanks	TBA	Q3 2016
INPEX - LNG train on-site installation and hook up	TBA	Q4 2016
<b>COUNCIL PROJECTS (CITY OF PALMERSTON)</b>		
Rosebery - construct 15 unit residential development	7.0	Q2 2015
Palmerston - road sealing works to reseal various roads throughout the municipality	0.6	Q2 2016



Photo: Fort Hill Wharf fender pile and whaler beam repairs

DARWIN ENVIRONS	Est \$M	Anticipated Completion
<b>NORTHERN TERRITORY GOVERNMENT PROJECTS</b>		
Rehabilitation Centres - various	6.0	Q2 2015
Fort Hill Wharf - fender pile and whaler beam repairs	1.0	Q2 2015
The Avenue - fit out	0.4	Q2 2015
Peter McAulay Centre - watch house refurbishment	0.5	Q2 2015
Community Beef and Mining Roads - secondary local - upgrade sections Ooloo Road	2.0	Q2 2015
Charles Darwin Centre (Paspaley Building) fit out	12.0	Q3 2015
Darwin Waterfront - stage 6 and 7 - fuel facility, decontamination - west Bennett Street - environmental	26.0	Q3 2015
Peter McAulay Centre - Joint Emergency Services Communications Centre refurbishment	1.5	Q3 2015
Royal Darwin Hospital - complete upgrade of the fire detection system	1.6	Q3 2015
Darwin Youth Detention Centre	1.2	Q4 2015
Tiger Brennan Drive duplication - Woolner Road to Berrimah Road	88.0	Q2 2016



Photo: Charles Darwin Centre



DARWIN ENVIRONS (Cont)	Est \$M	Anticipated Completion
<b>POWER WATER CORPORATION PROJECTS</b>		
Frances Bay Zone Substation - second transformer and 66 KV line	16.7	Q2 2015
Darwin City Zone Substation	33.0	Q2 2015
Leanyer Zone Substation - 66 KV line	25.4	Q3 2015
Parap - trunk sewer upgrade	7.5	Q4 2015
Casuarina Zone Substation - outdoor switchyard	22.1	Q2 2017
<b>DEFENCE PROJECTS</b>		
RAAF Base Darwin - HV ring main	1.3	Q2 2015
RAAF Base Darwin - refurbish rations store	1.5	Q3 2015
Shoal Bay receiving station - replacement of chillers	3	Q3 2015
Defence Housing Australia - RAAF Darwin married quarters redevelopment	TBA	2016



Photo: Darwin International Airport - Retail Upgrades – Fit Out

DARWIN ENVIRONS (Cont)	Est \$M	Anticipated Completion
<b>PRIVATE SECTOR PROJECTS</b>		
Charles Darwin Centre (Paspaley Building)	100.0	Q2 2015
Darwin International Airport - family entertainment centre	6.0	Q2 2015
Nightcliff Gardens Estate, stage 2 - AVIS Apartments	16.0	Q2 2015
Nightcliff Gardens Estate, stage 3 - Nahla Apartments	24.0	Q2 2015
Smith Street - Jepun apartments	TBA	Q2 2015
Darwin International Airport - Retail Upgrades – fit out	1	Q3 2015
Coconut Grove – Eclipse - 1 Runge Street - 59 by 2 bed apartments	36.0	Q3 2015
Argus on Shepherd - 13 storey hotel	30.0	Q4 2015
Top End Hotel - redevelopment	TBA	2016
Harvey Street - mixed use development	23.0	Q1 2016
Darwin Corporate Park - commercial office spaces, stages 1 and 2	85.0	Q4 2016
Berrimah Business Park – Vertical Technology Warehouse (VTG) Development	TBA	TBA
Marrara - stay over workers village accommodation expansion	TBA	TBA
The Avenue - Hastings over Mindil - Soul and Spirit Towers	270.0	TBA
Sill 80 project - surface mining and processing of limonite sands	10.0	TBA

## PROPOSED

<b>TERRITORY WIDE</b>	<b>Anticipated Start</b>
<b>NORTHERN TERRITORY GOVERNMENT PROJECTS</b>	
Cyclone Remediation	2015
Expand mobile phone services and broadband into communities	Q1 2016
<b>DEFENCE PROJECTS</b>	
Phase 3 Defence Terrestrial Communications Network Facilities upgrades	Q2 2015
Robertson Barracks/RAAF Darwin/RAAF Tindal - Land 121 - unit sustainment facilities	Q3 2016
<b>CENTRAL AUSTRALIA</b>	
<b>Anticipated Start</b>	
<b>NORTHERN TERRITORY GOVERNMENT PROJECTS</b>	
Alice Springs Correctional Centre - expansion to Cottages Precinct	Q2 2015
Stuart Highway - pavement rehabilitation chainage 1491 - 1786km	Q2 2015
Ross Highway - widening the existing sealed pavement from chainage 41.6 - 45.0km	Q2 2015
Tanami Road - extend seal chainage 221.0 - 225.0km	Q2 2015
Stuart Highway - Stuarts Well Roadhouse intersection	Q2 2015
Kilgariff - land release 1B	Q3 2015
Ti-Tree - land release	Q3 2015
Alice Springs - paths and tracks connectivity project - tourism paths	Q3 2015
Plenty Highway (Outback Way) - upgrade chainage 96.8 to 109.0km	Q3 2015
Stuart Highway - Motor Vehicle Registry to Telegraph Road upgrade	Q3 2015
Alice Springs Motor Vehicle Registry to Telegraph Road - urban beautification	Q4 2015
Braitling Primary School - New Pre School	Q4 2015
Larapinta Primary School - new Child and Family Centre	Q4 2015
Larapinta - land release	Q4 2015
Alice Springs - upgrade netball facilities	Q1 2016
Alice Springs Youth Centre - upgrade - stage 3	Q1 2016
Alice Springs Supreme Court - fit out	Q1 2016
Alice Springs Youth Centre - upgrade - stage 4	Q2 2016
Alice Springs - new athletics track	TBA
Alice Springs - new lawn bowls facilities	TBA
Alice Springs - Mt John Valley - flood immunity - all-weather access	TBA
Central Australia Drag Racing Association - replace and extend the existing track	TBA
Larapinta - headworks connecting Albrecht Drive and Mparntwe Drive	TBA
Larapinta Drive - intersection improvements	TBA
Mereenie Inner Loop - Central Australia - reseal 43 kms	TBA
<b>Alice Springs Hospital</b>	
Alice Springs Hospital - decant ward and corridors rectification	Q3 2015
Alice Springs Hospital - fire rectification works	Q3 2015
Alice Springs Hospital - teaching and training facility	Q3 2015
Alice Springs Hospital - upgrade emergency power and electrical systems	Q3 2015
<b>National Partnership Agreement on Remote Indigenous Housing (NPARIH)</b>	
Kaltukatjara - remote housing upgrades	Q2 2015
Areyonga - remote housing, new builds and upgrades	TBA
Mount Liebig - remote housing upgrades	TBA
Nturiya - remote housing upgrades	TBA
<b>COOPERATIVE PROJECTS</b>	
Alcohol Mandatory Treatment Centre	TBA
<b>POWER WATER CORPORATION PROJECTS</b>	
Kilgariff - land release - water storage infrastructure	TBA
Yuendumu - essential services infrastructure	TBA

CENTRAL AUSTRALIA (Cont)	Anticipated Start
<b>MINING AND PETROLEUM SECTOR PROJECTS</b>	
Mt Peake Project - stage 1 - develop new open pit mining and processing operation	Q1 2016
Nolan's Mine - open-cut mine, on-site preliminary processing to produce REO concentrate and off-site final processing plant	Q2 2016
Chandler Salt Mine - develop underground mine, on-site salt and fertilizer processing plant	Q1 2017
Jervois Mine - reopen old mine with 2 open-cut pits and on-site processing plant	Q1 2017
Old Pirate High-Grade Gold Mine – new facility	TBA
Molyhil Mine - develop underground mine and on-site processing plant	TBA
Newmont Tanami - mine expansion including second decline and increased plant capacity	TBA
<b>PRIVATE SECTOR PROJECTS</b>	
Charles Darwin University/Consortium of Catholic Schools – new Trades Training Centre	Q2 2015
<b>COMMONWEALTH GOVERNMENT PROJECTS</b>	
Docker River Aerodrome - upgrade and seal	Q3 2015
Plenty Pathways - Trade Training Centre	TBA
Yuendumu - Trade Training Centre	TBA
BARKLY REGION	Anticipated Start
<b>NORTHERN TERRITORY GOVERNMENT PROJECTS</b>	
Borroloola - Trade Training Centre	Q2 2015
Canteen Creek Airstrip - upgrade	Q2 2015
Tablelands Highway - strengthening and widening the existing pavement sections from chainage 321.7 - 324.0km	Q2 2015
Robinson River - Health Centre	Q1 2016
Borroloola - land release - 35 residential lots	TBA
Tablelands Highway - strengthen six bridges	TBA
Wollogorang Road - Robinson and Calvert Crossings	TBA



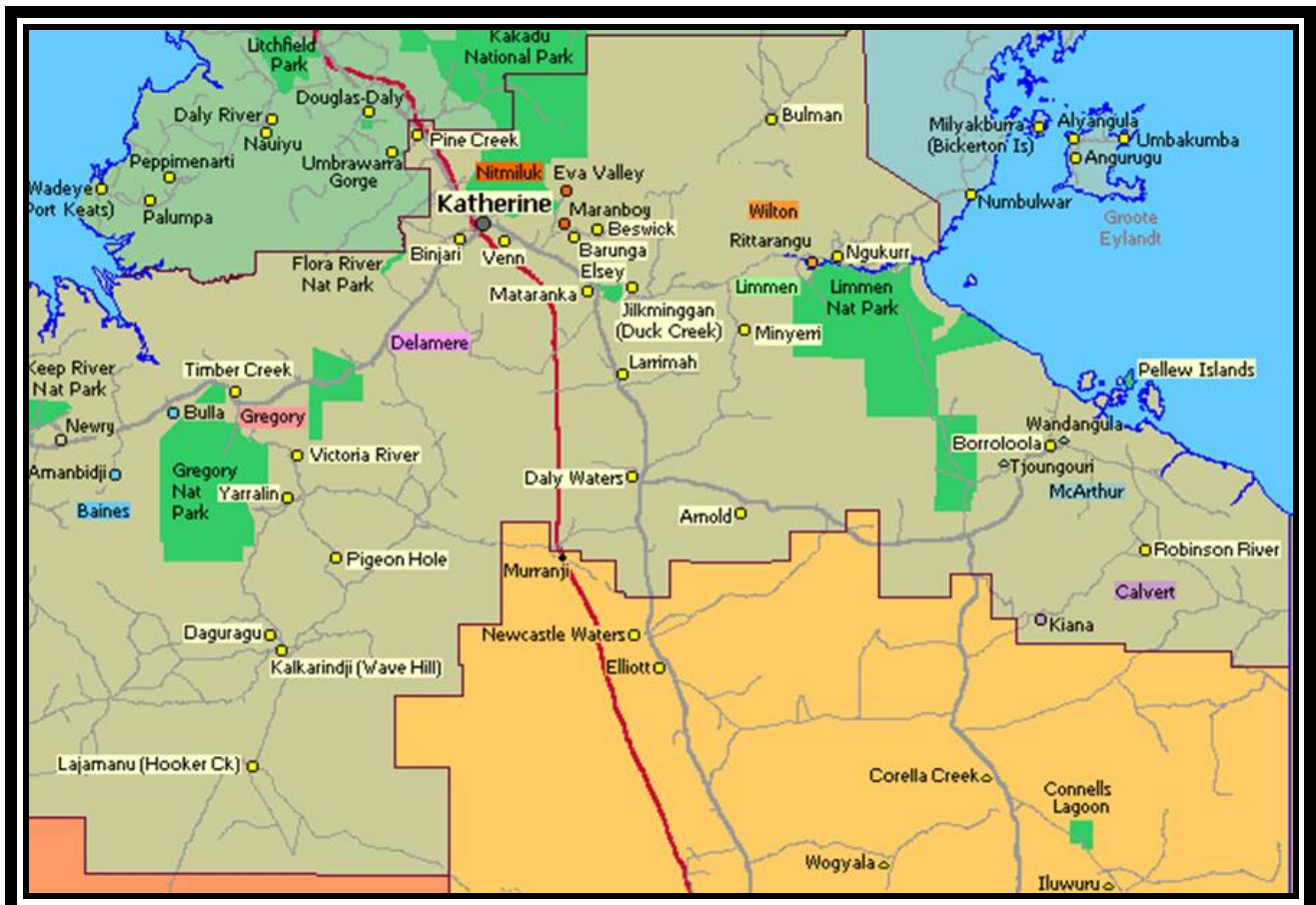
Map: Barkly Region

BARKLY REGION (Cont)	Anticipated Start
<b>Government Employee Housing (GEH)</b>	
Ali Curung - construct housing	Q4 2015
<b>COOPERATIVE PROJECTS</b>	
Tennant Creek Speedway - new tower, club house and upgrade facilities	TBA
<b>POWER WATER CORPORATION PROJECTS</b>	
Ali Curung - essential services infrastructure	TBA
Ali Curung - new full gravity reticulation sewer	TBA
<b>MINING AND PETROLEUM SECTOR PROJECTS</b>	
Ammaroo Phosphate Mine - new mine with open-cut pits, crushing and processing plant (3 options)	2017
Wonarah Phosphate Mine - stage 1 - open-cut mine and on-site superphosphate processing	TBA
North East Gas Interconnector	TBA



Proposed North East Gas Connector

KATHERINE REGION	Anticipated Start
<b>NORTHERN TERRITORY GOVERNMENT PROJECTS</b>	
Central Arnhem Road – inverts (4)	Q2 2015
Hodgson River Road - seal chainage 25.3 - 30.3km	Q2 2015
Kalkarindji - Child and Family Centre	Q2 2015
Beasley Road - Katherine rural roads upgrade	Q2 2015
Carbeen Park Road - Katherine rural roads upgrade	Q2 2015
Gundagai Road - Katherine rural roads upgrade	Q2 2015
Lajamanu Road - Kalkarindji to Lajamanu	Q2 2015
Ngukurr - remote health clinic	Q2 2015
Stuart Highway - surface renew chainage 503 - 510km	Q2 2015
Victoria Highway - West Baines - stage 3 - chainage 377 - 380km	Q2 2015
Victoria Highway/Bicentennial Rd - intersection upgrade	Q2 2015
Buntine Highway - strengthen and widen	Q2 2015
Katherine East - stage 2 - land release	Q3 2015
Roper Highway - widen and seal chainage 35.38 - 114.1km	Q3 2015
Victoria Highway – Saddle Creek Crossing upgrade	Q3 2015
Yarralin Airstrip - upgrade	Q3 2015
Mataranka - land release	Q4 2015
Pine Creek - land release	Q4 2015
Timber Creek - land release	Q4 2015
Kintore Street School - new administration facility	Q4 2015
Katherine - new Ambulance Centre	Q2 2016
Katherine Country Club - golf course redevelopment	TBA
Katherine Motor Sports Club - upgrade	TBA



Map: Katherine Region



<b>KATHERINE REGION (Cont)</b>	<b>Anticipated Start</b>
<b>Government Employee Housing (GEH)</b>	
Kalkarindji - construct housing	Q2 2015
Palumpa - construct housing	Q3 2015
<b>National Partnership Agreement on Remote Indigenous Housing (NPARIH)</b>	
Amanbidji - remote housing, new builds and upgrades	TBA
Rittarangu and Urapunga - remote housing, new builds and upgrades	TBA
<b>POWER WATER CORPORATION PROJECTS</b>	
Ngukurr - essential services infrastructure	TBA
Ngukurr - upgrade water production and water storage	TBA
<b>TERRITORY GENERATION PROJECTS</b>	
Katherine Power Station - life extension - Mars fuel and control system	Q2 2015
<b>DEFENCE PROJECTS</b>	
Delamere Range - redevelopment	2015
RAAF Base Tindal - Air 5431 - Air Traffic Management and Control Systems - replace the existing Australian Defence Air Traffic system	2015
RAAF Base Tindal - AIR8000 - new air combat capability (JSF35)	2017
RAAF Base Tindal - redevelopment	2017
RAAF Base Tindal - married quarters extension, 50 houses	TBA
<b>MINING AND PETROLEUM SECTOR PROJECTS</b>	
Mt Todd Mine - reopen open-cut pit with new on-site processing plant and power station	2017
<b>COMMONWEALTH GOVERNMENT PROJECTS</b>	
Lajamanu School - Trade Skills Centre	TBA
<b>EAST ARNHEM REGION</b>	<b>Anticipated Start</b>
<b>NORTHERN TERRITORY GOVERNMENT PROJECTS</b>	
Maningrida - barge landing upgrade	Q2 2015
Maningrida - Trade Training Centre	Q2 2015
Maningrida - Remote School Attendance Strategy - 2 new classrooms	Q2 2015
Maningrida - Remote School Attendance Strategy - ablution block	Q2 2015
Rocky Bottom Creek – construction of new bridge	Q2 2015
Shepherdson College - Trade Training Centre	Q2 2015
Umbakumba - Health Clinic	Q2 2015
East Arnhem - Trade Training Centre	Q2 2015
Galiwinku - Trade Training Centre	Q2 2015
Galiwinku - remote Health Clinic	Q3 2015
Gove District Hospital - staff accommodation fire upgrade	Q3 2015
Nhulunbuy High School - Residential Boarding Facilities - stage 1 - 40 Bed residential facility and ancillary infrastructure	Q3 2015
Nhulunbuy High School - Residential Boarding Facilities - stage 2 - 40 bed residential facility	Q4 2015
Nhulunbuy High School Home Economics Upgrade	Q4 2015
Numbulwar - Health Centre	Q1 2016
Galiwinku - upgrade transport access - barge landing	TBA
Gove District Hospital - upgrade Emergency Department	TBA
Gove Rehabilitation Centre - alcohol and related services	TBA
Ramingining - upgrade transport access – barge landing	TBA
<b>Government Employee Housing (GEH)</b>	
Minjilang - construct housing	Q2 2015
<b>National Partnership Agreement on Remote Indigenous Housing (NPARIH)</b>	
Warruwi - remote housing, new builds and upgrades	Q2 2015
Weemol - remote housing upgrades	TBA
<b>COOPERATIVE PROJECTS</b>	
Pickertaramoor Road - initial road construction	TBA
Pickertaramoor Road - sealing	2016
<b>POWER WATER CORPORATION PROJECTS</b>	
Angurugu - essential services infrastructure	TBA
Angurugu - new sewer outfall	TBA



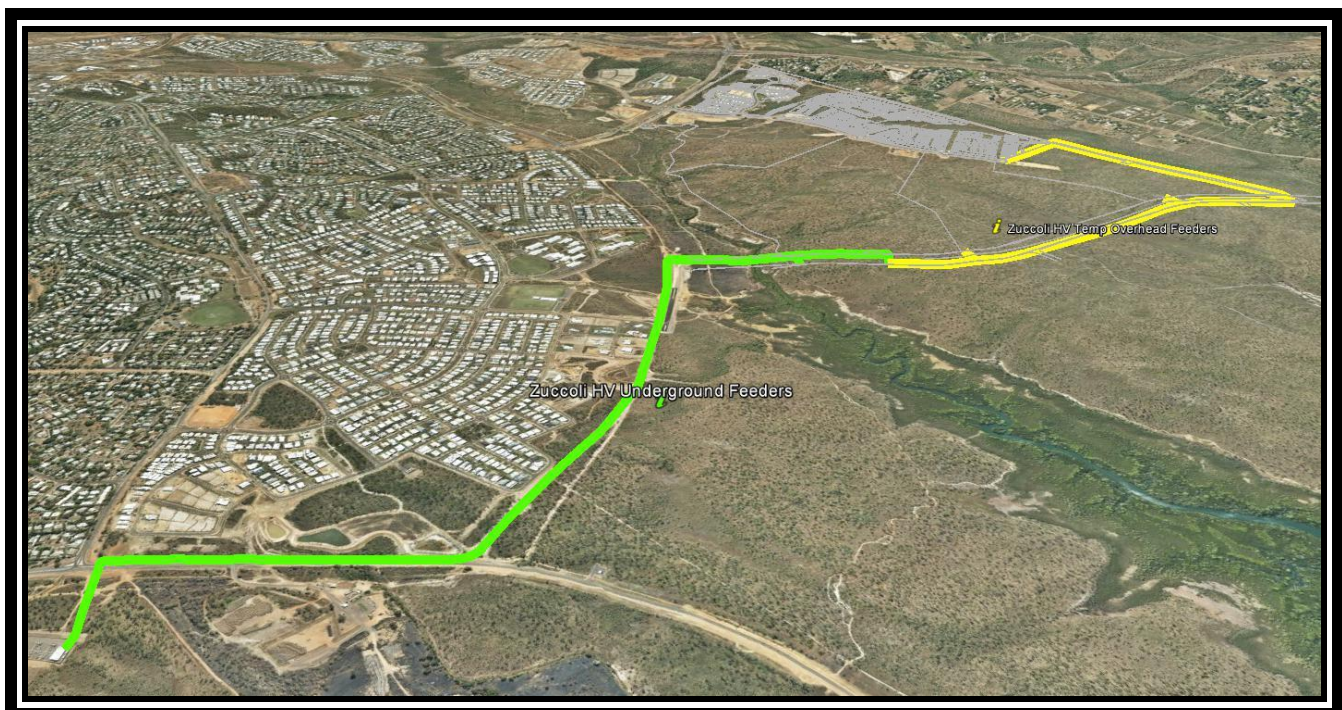
EAST ARNHEM REGION (Cont)	Anticipated Start
<b>MINING AND PETROLEUM SECTOR PROJECTS</b>	
GEMCO (Groote Eylandt) - establish new quarries on eastern leases to provide additional ore	Q1 2017
<b>COMMONWEALTH GOVERNMENT PROJECTS</b>	
Numbulwar School - Trade Skills Centre	TBA



Map: East Arnhem Region

TOP END RURAL	Anticipated Start
<b>NORTHERN TERRITORY GOVERNMENT PROJECTS</b>	
Gapuwiyak - upgrade transport access	TBA
Litchfield Park - Florence Falls site - upgrade	TBA
Litchfield Park - Tolmer Falls - new picnic area, toilet facilities and half day walk	TBA
Maningrida - upgrade transport access	TBA
Kambolgie Creek - new all-weather crossing on Gimbat Road - Kakadu	TBA
Lower Finnis River - new bridge	TBA
Port Keats - Saddle Rail and Yellow Creek crossing	TBA
<b>Government Employee Housing (GEH)</b>	
Milingimbi - lot 89 construct duplex	Q3 2015
<b>National Partnership Agreement on Remote Indigenous Housing (NPARIH)</b>	
Milikapiti - remote housing, new builds	TBA
Minjilang - remote housing and new builds	TBA
Peppimenarti - remote housing, new builds and upgrades	TBA
<b>POWER WATER CORPORATION PROJECTS</b>	
Howard East Borefield access road, pipe works and bore equipping	Q3 2015
<b>MINING AND PETROLEUM SECTOR PROJECTS</b>	
Ranger 3 Deeps - develop underground mining operation	Q1 2016
Kilimiraka - develop new mineral sands mine and processing plant - south west corner Bathurst Island	2017
Tom's Gully - reopen underground mine and on-site processing plant	Q2 2021
<b>COMMONWEALTH GOVERNMENT PROJECTS</b>	
Milingimbi School - Trade Skills Centre	TBA

<b>PALMERSTON AND LITCHFIELD</b>		<b>Anticipated Start</b>
<b>NORTHERN TERRITORY GOVERNMENT PROJECTS</b>		
Rosebery Preschool - extend facility		Q2 2015
Lambrick Avenue - cycle path		Q2 2015
Holtze - stage 1		Q2 2015
Fog Bay Road - Leviathan Creek Crossing		Q3 2015
Palmerston Special School - stage 1		Q3 2015
Roystonea Avenue - off ramp		Q3 2015
Roystonea Avenue upgrade - Temple Terrace to Gurd Street		Q3 2015
Wishart Road, stage 1 and 2 - development of industrial land		Q3 2015
Bees Creek Preschool - extension		Q2 2016
Litchfield Park Road - upgrade		TBA
Palmerston - addition CCTV cameras		TBA
Palmerston - upgrade the Satellite City BMX track		TBA
Flood Mitigation - Industrial areas in Palmerston and areas of Howard Springs, Herbert and Virginia		TBA
<b>Palmerston East</b>		
Palmerston East - Zuccoli Southern HV electrical reticulation		Q2 2015
Palmerston East - Zuccoli subdivision, stage 3 and 4 - 750 lots, primary school and neighbourhood shopping centre		Q2 2015
Palmerston East - Zuccoli subdivision, stage 5		Q3 2015
<b>POWER WATER CORPORATION PROJECTS</b>		
Darwin – rebuild the CIPS to Hudson Creek 132kV transmission line including Elizabeth River Crossing		Q2 2015
Palmerston - water supply improvements program		Q2 2018



Proposed Palmerston East - Zuccoli Southern HV Electrical Reticulation

<b>PALMERSTON AND LITCHFIELD (Cont)</b>	<b>Anticipated Start</b>
<b>DEFENCE PROJECTS</b>	
Shoal Bay Receiving Station - facility upgrade	Q2 2015
<b>PRIVATE SECTOR PROJECTS</b>	
Coolalinga Shopping Village	Q2 2015
Johnson - Lot 11201 Angel Road - 81 by 2 bed and 4 by 3 bed apartments	Q2 2015
Mackillop Catholic College - stage 3	Q3 2015
Maluka Views development - mixed use precinct (retail, commercial, residential)	Q3 2015
Palmerston 'Superblock' - CBD mixed use development	Q3 2015
East Arm - on-site hire	TBA
East Arm - Patricks Logistics	TBA
<b>COUNCIL PROJECTS (CITY OF PALMERSTON)</b>	
Durack - The Heights Neighbourhood Centre	Q2 2015
Goyder Square - stage 2	Q2 2015
The Boulevard - stage 2 - upgrade the Boulevard to city centre main street includes earthworks, pavement, asphalt, footpaths, lighting and associated services	Q3 2015
Palmerston - construct 450 bay multi-level car parking station	Q3 2016



Map of the Darwin, Palmerston & Litchfield and Top End Rural Regions

<b>DARWIN ENVIRONS</b>		<b>Anticipated Start</b>
<b>NORTHERN TERRITORY GOVERNMENT PROJECTS</b>		
Darwin High School - Open Education Centre		Q2 2015
Millner Primary School - thermal plant upgrade of air conditioning chiller		Q2 2015
Royal Darwin Hospital - upgrade asbestos fire mains		Q2 2015
Royal Darwin Hospital - upgrade fire doors and frames		Q2 2015
Stuart Highway and Bagot Road - right turn lane extension		Q2 2015
Esplanade Boardwalk		Q3 2015
Hidden Valley Motor Sports Complex - upgrade		Q3 2015
Malak - Cyclone Shelter		Q3 2015
Museum and Art Gallery of the Northern Territory (MAGNT) - upgrade and replace heating, ventilation and air conditioning		Q3 2015
Richardson Park - new rectangular sporting stadium		Q3 2015
Royal Darwin Hospital - new Eye Clinic		Q3 2015
Royal Darwin Hospital - upgrade negative pressure isolation rooms		Q4 2015
Casuarina Coastal Reserve - new paths		Q4 2015
Dripstone Cliffs - Casuarina Coastal Reserve - upgrade		Q4 2015
Rapid Creek - Casuarina Coastal Reserve - upgrade - new picnic area		Q4 2015



Concept of the Darwin High School Open Education Centre – Bullocky Point

<b>DARWIN ENVIRONS (Cont)</b>	<b>Anticipated Start</b>
<b>NORTHERN TERRITORY GOVERNMENT PROJECTS (Cont)</b>	
Anula Primary School - new tempered air system	Q1 2016
Darwin Waterfront - development headworks - stage 2 - residential and commercial development	Q1 2016
Fannie Bay - lot 8898 (Sports House site) residential redevelopment	Q1 2016
Goyder's Park - development - stage 1 (commemorate the site of Darwin's first European settlement)	Q1 2016
Darwin Waterfront - Jervois Park - coastal landscaping, CCTV and signage	Q1 2016
Wulagi Primary School - refurbishment	Q1 2016
Berrimah Farm - land release	TBA
Darwin - CCTV enhancements on buses and at interchanges	TBA
Fannie Bay - upgrade lawn bowls facilities	TBA
Indigenous Cultural Centre Development	TBA
Darwin - infill Crown Land sites	TBA
Marrara - Tennis Centre	TBA
Marrara - upgrade lawn bowls facilities	TBA
<b>COOPERATIVE PROJECTS</b>	
Darwin Velodrome - upgrade	Q2 2015
Chan Building - redevelopment - dedicated Visual Art Gallery	Q2 2016
Vanderlin Drive - duplication	TBA



Concept of Chan Building Redevelopment

DARWIN ENVIRONS (Cont)	Anticipated Start
<b>DEFENCE PROJECTS</b>	
Air 5431 RAAF Base Darwin Air Traffic Management and Control Systems - replace the existing Australian Defence Air Traffic system	2015
RAAF Base Darwin - new facilities for P8 aircraft	2015
Larrakeyah Barracks including NORFORCE redevelopment	2016
RAAF Base Darwin - base redevelopment	2018
HMAS Coonawarra Health Centre - joint health command interim garrison health facilities upgrade	Q2 2015
RAAF Base Darwin - flood mitigation	Q2 2015
Muirhead - landscaping construction - stage 3	TBA
HMAS Coonawarra Health Centre - joint health command permanent garrison health facilities upgrade	TBA
<b>COUNCIL PROJECTS (CITY OF DARWIN)</b>	
Darwin Esplanade - addition of a new bike path and more trees - Daly Street to Herbert Street	Q2 2015
Jingili - skate park	Q2 2015
Barneson Avenue - link from Tiger Brennan Drive to Cavenagh Street	TBA



Concept of Jingili Skate Park

<b>DARWIN ENVIRONS (Cont)</b>	<b>Anticipated Start</b>
<b>PRIVATE SECTOR PROJECTS</b>	
Charles Darwin University – Purple Precinct refurbishment	Q2 2015
Charles Darwin University – theatre refurbishment	Q2 2015
Cavenagh Street - Energy House - facade upgrade	Q2 2015
Jape Homemaker Village - stage 7 - showroom and offices	Q2 2015
CBD Refurbishment	Q3 2015
Parap - lot 2647 Gregory Street - 12 units within 3 storeys	Q3 2015
Milner Village Plaza - stages 2, 3 and 4 including 54 units and commercial	Q3 2015
The Esplanade - mixed use development	Q3 2015
Lindsay Street - lot 1462,- 60 by 1 bed apartments	Q4 2015
Harvey Street - lot 7278 Ryko Court / Barneson Street – La Vista Apartments - 63 units within 11 storeys	Q4 2015
Array apartments	TBA
Asti Motel - refurbishment of existing motel plus 24 by 2 and 12 by 1 bedroom serviced apartments	TBA
Best Western Airport Gateway Hotel - expansion	TBA
East Arm - Charter Hall - four hectare industrial lot that will host Northline's new transport hub	TBA
DoubleTree by Hilton Hotel Darwin expansion	TBA
Frontier Hotel - expansion	TBA
Gateway Plaza building - mixed use development	TBA
Larrakeyah - shops and apartments	TBA
Leydin Court - CBD serviced apartments	TBA
Lizards Bar and Grill - redevelopment	TBA
Jingili - lot 4522 and 9718 McMillans Road - restaurant, shop, motel and apartments	TBA
Woods Street - Magnum apartments	TBA
Mitchell Street- mixed use development	TBA
Nightcliff Gardens Estate, stage 4	TBA
Stuart Park - Quarry Crescent apartments	TBA
Mitchell Street - redevelopment of Hog's Breath Café - 20 storey mixed development	TBA
Redevelopment of old Woolworths site at the end of Smith St Mall	TBA
Nightcliff - Seabreeze apartments	TBA
The Avenue - Essence apartments, stage 3	TBA
The Gardens - motel expansion	TBA
The Lenz - serviced apartments	TBA
<b>COMMONWEALTH GOVERNMENT PROJECTS</b>	
Royal Darwin Hospital - upgrade Paediatric Facility	Q3 2015



*Construction Snapshot March 2015 Edition* is published by the Department of Infrastructure.

**Note:** Dates, where shown, are depicted in calendar year quarters.

## DISCLAIMER

*Construction Snapshot* is intended only to provide an overview of construction activity for major works over \$500 000 in the Northern Territory up to **31 March 2015**. While due care has been taken, this information is compiled from many sources and is subject to change. No reliance should be placed on any statement or information referred to herein without first making your own assessment and enquiry about the completeness, accuracy, reliability and status of the information and relevance to your circumstances. The Northern Territory of Australia gives no warranty or assurance of this information and accepts no direct, indirect or consequential liability arising from reliance on this information.

**ISBN:** 978-0-9873525-5-2

## CONTACT

This publication is presently managed by the Major Projects, Procurement and Contract Services division of the Northern Territory Government's Department of Infrastructure.

**T:** +61 8 8924 7303

**E:** [constructionsnapshot.ntg@nt.gov.au](mailto:constructionsnapshot.ntg@nt.gov.au)

**Office location:**

4<sup>th</sup> Floor, Highway House  
PALMERSTON NT 0830

**Postal address:**

PO Box 61  
PALMERSTON NT 0830

**Web page:**

<http://www.nt.gov.au/infrastructure/publications/snapshot/index.shtml>