

## COMPLETION OF THE TIGER BRENNAN EXIT OFF RAMP

To increase the safety of motorists exiting Tiger Brennan Drive into Palmerston, work to realign and extend the exit ramp onto Roystonea Avenue is now complete.

The exit ramp entry was relocated approximately 525 metres towards the city (west) and was extended in length by the same amount. The project also included features such as increased street lighting and improved drainage.

The Northern Territory Government committed \$2.9 million towards this project, which is now open to Territory motorists.

# PALMERSTON ROAD UPGRADES

JULY / AUGUST 2016

Department of Infrastructure  
Bob Pemble, Executive Director Civil Services

Phone: 08 8999 4868

Email: [civilprojects.doi@nt.gov.au](mailto:civilprojects.doi@nt.gov.au)

Web: [www.nt.gov.au/infrastructure/projects](http://www.nt.gov.au/infrastructure/projects)



Road Report NT

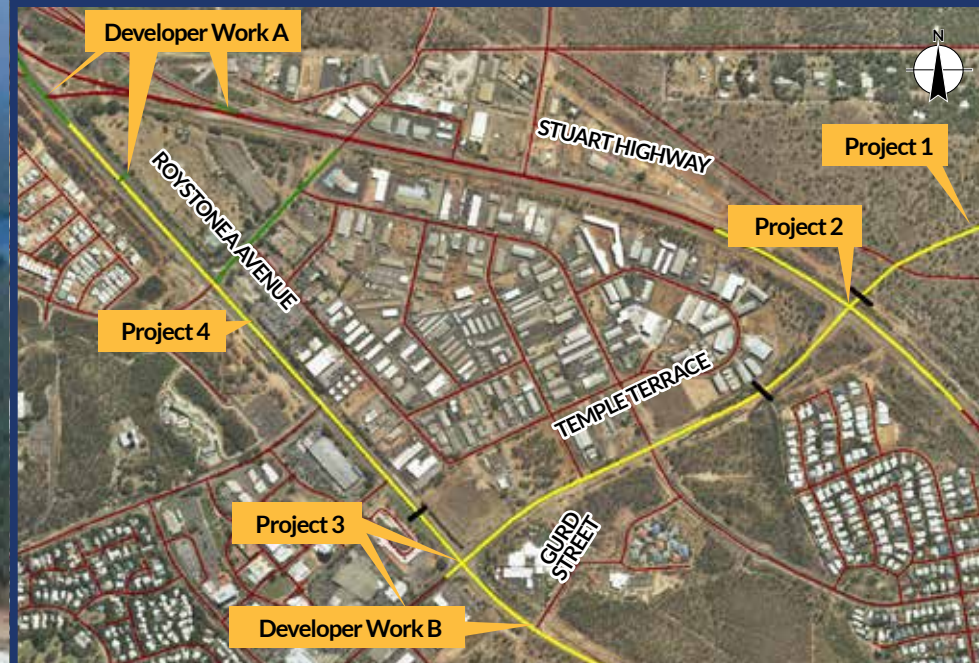
Stuart highway/Temple Terrace intersection –  
access point to the Palmerston Regional Hospital





## ROAD UPGRADES MAP 1

PROJECT NAME	PROJECT	TIMING
<b>A</b> Gateway Development	New access off Roystonea Avenue including a left turn lane after the overpass and traffic lights, between Tiger Brennan Drive and Yarrowonga Road. New access off Yarrowonga Road and the Stuart Highway.	Staged construction commenced.  Anticipated completion September 2016.
<b>B</b> The Views	Proposed access off Roystonea Avenue, opposite Gurd Street.	Construction underway, anticipated completion August 2016.



PROJECT NAME	PROJECT	TIMING
<b>1</b> Palmerston Regional Hospital Access	Roads to provide access to Palmerston Regional Hospital.	Construction tender awarded. Works commenced, anticipate completion January 2017.
<b>2</b> Stuart Highway/ Temple Terrace Intersection	Upgrade intersection including provision for access to Palmerston Regional Hospital.	Fully operational 23 March 2016. Landscaping works to be completed by end July 2016.
<b>3</b> Roystonea Avenue/ Temple Terrace Intersection Temple Terrace duplication between Roystonea Avenue and Stuart Highway	Upgrade intersection and extend Roystonea Avenue duplication to Terry Drive. Completion of the duplication of Temple Terrace between Roystonea Avenue and the Stuart Highway, including new intersection at Farrar Boulevard.	Construction underway, expected completion October 2016.
<b>4</b> Roystonea Avenue Third Lane Outbound	Third lane from Tiger Brennan Drive overpass to Temple Terrace, including upgraded intersections at Yarrowonga Road, University Avenue and the Boulevard.	Construction underway, expected completion January 2017

## ABOUT THE PROGRAM

The Northern Territory Government is delivering a series of road improvements to provide a safer traffic environment and allow for a greater movement of vehicles in and around Palmerston city.

A combined value of \$57 million has been committed to Palmerston city and which will see road improvements carried out throughout 2016.

The Department of Infrastructure aims to minimise inconvenience to the travelling public where possible and will continue to provide project specific information to residents, businesses and road users in advance.

MAP LEGEND  
 Planned Project  
 Funded Projects  
 Developments  
 Roads

DATA SOURCE  
 Water Resources  
 Natural Resources Division, DLRM  
 Cadastre/Roads  
 Land Information, DLPE  
 Drainage  
 1:250,000 Geoscience Australia

## ROAD UPGRADES MAP 2



PROJECT NAME	PROJECT	TIMING
<b>5</b> Tiger Brennan Drive Off-Ramp Extension	525m extension of off ramp from Tiger Brennan Drive to Roystonea Avenue.	Off-Ramp fully operational. Drainage works expected completion July 2016.
<b>6</b> Kirkland Road/ Elrundie Avenue Intersection	Landscaping improvements.	Contract awarded July 2016.
<b>7</b> Kirkland Road/ Woodlake Boulevard Intersection	Upgrade intersection to improve safety.	In design phase.
<b>8</b> Frances Street	Upgrade intersection Frances Drive and University Avenue	Designed. Construction included with Roystonea third lane. Construction expected to commence July 2016 with anticipated completion October 2016.

## ROAD UPGRADES MAP 3



PROJECT NAME	PROJECT	TIMING
<b>9</b> Lambrick Avenue Cycle Path	New cycle path from Roystonea Avenue, crossing the Stuart Highway and linking with the Howard Springs Cycle Path.	Construction underway, expected completion August 2016.
<b>10</b> Extension of Roystonea Avenue/ Lambrick Avenue to Owston Avenue	Part of the continuation of infrastructure to support land release in East Palmerston, particularly Zuccoli.	Construction commenced January 2016. Construction is scheduled for completion September 2016.
<b>11</b> Elrundie Avenue/ Bonson Terrace Intersection	Addition of left turn lane into Bonson Terrace and improved street lighting.	Complete