



# NT Infrastructure Plan and Pipeline **2023** **TOP END**

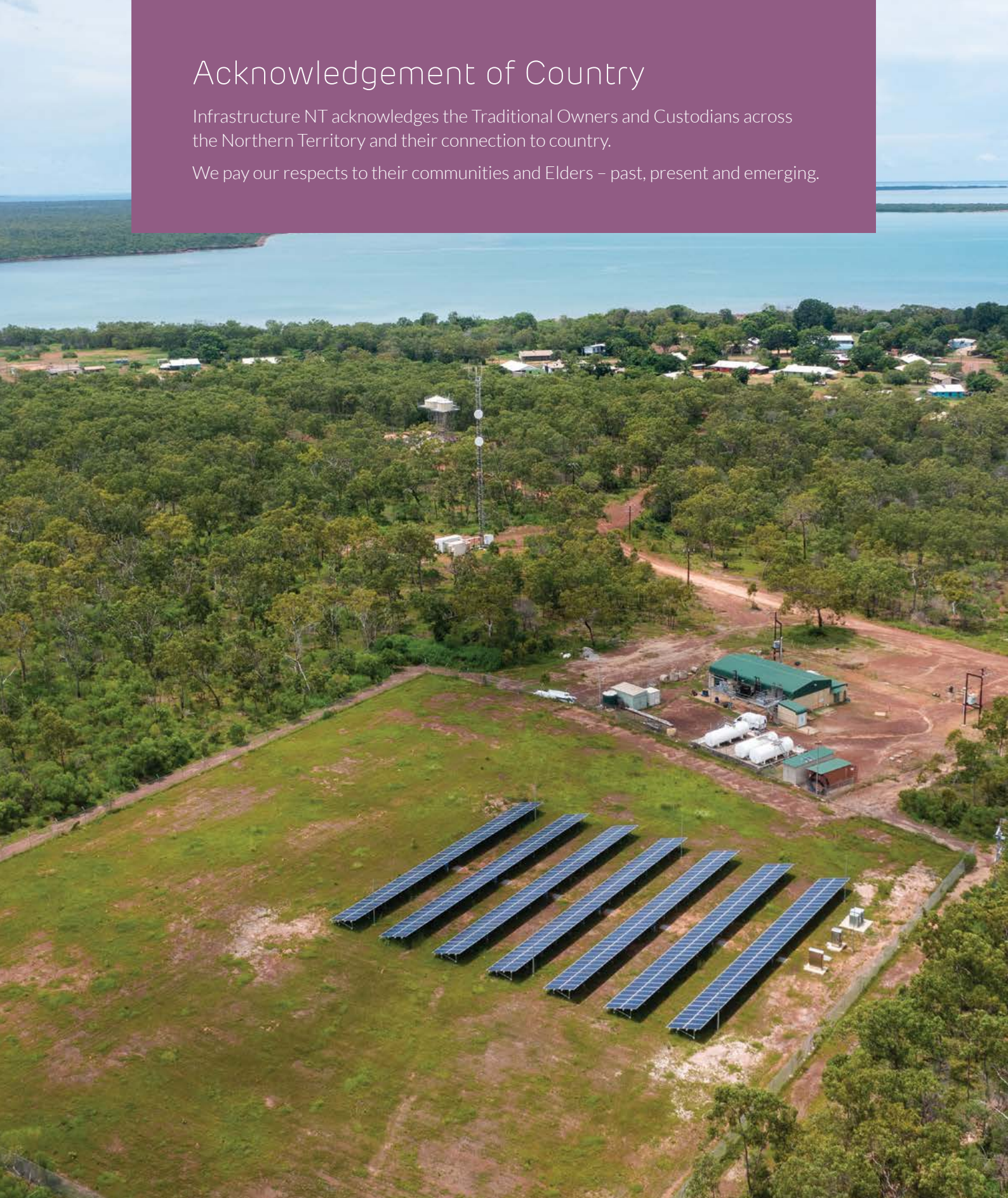




# Acknowledgement of Country

Infrastructure NT acknowledges the Traditional Owners and Custodians across the Northern Territory and their connection to country.

We pay our respects to their communities and Elders – past, present and emerging.



*Above: Warruwi solar array. Credit: Power and Water Corporation.*

*Cover: Exploring Nawurlandja Lookout. Credit: Tourism NT / Helen Orr.*





# Top End

The Top End region is steeped in culture and natural beauty boasting tropical islands, untouched coastlines and one of the world's heritage listed national parks, Kakadu.

## The Top End region:

- > has Aboriginal cultures that date back 65 000 years
- > boasts strong and distinctive cultural heritage values with many diverse Aboriginal cultural groups present
- > has a diverse natural environment and provides resources and raw material of economic benefit like timber, minerals, water and solar
- > is home to Kakadu National Park, one of only a few dozen sites in the world listed on the UNESCO World Heritage List for its outstanding natural and cultural values.

---

## Contents

Regional overview	2
Investment portfolio	4
Key projects, programs and proposals	5
Nationally significant	6
Territory-wide	15
Regionally significant	21
NT Infrastructure Audit	34

## Major industries and growth sectors in the Top End



Tourism



Agribusiness

Located in the northern most section of the Territory, the Top End Region is made up of over 112 295 square kilometres. It encompasses the West Daly and West Arnhem regional councils and the Tiwi Islands (made up of two main islands – Bathurst Island and Melville Island, which is the second largest Australian island after Tasmania). Extending from Wadeye in the west to Maningrida in the east, the region includes the town of Jabiru inside Kakadu National Park.

The sparsely populated area is home to approximately 18 000 people, of which approximately 69% of residents are Aboriginal or Torres Strait Islander people. The Top End has the highest portion of Aboriginal people living in the Territory.

Approximately 67% of the region's land mass is classified as Aboriginal land. There are 12 major and 5 minor communities, and 135 homelands across the Top End.

The region benefits from a range of key industries including resources, agribusiness and tourism.

The Top End region's economic output comes largely through the mining sector, with its unique geology making it abundant with natural minerals including lithium and gold. The Finiss Lithium Project, located 30 kilometres west of Berry Springs, is the first new Territory mine in more than 10 years and the first lithium mine to open in the Territory. Gold production will also recommence with the Mt Bundy Gold Project at its 3 mines – Tom's Gully, Rustlers Roost and Quest 29 – located about 100 kilometres south-east of Darwin via the Arnhem Highway.

The rehabilitation of mines within the region is a growing opportunity that supports improvements to the natural environment, contributes to the economy and provides long term job opportunities. Works commenced on the rehabilitation of the Ranger mine site in 2021, and stage 3 works on the Rum Jungle uranium mine site commenced in late 2022.

The Territory and Australian governments are investing \$411.5 million to transform Jabiru from a mining town into a vibrant and sustainable tourism hub and service centre for Kakadu National Park and the West Arnhem region.

Tourism is a significant contributor to economic activity in the region which boasts spectacular natural wonders and world renowned attractions such as Litchfield and Kakadu national parks, the Daly River for recreational fishing and camping, and Tiwi Islands, Gunbalanya and Maningrida for arts and textiles.

There is significant, untapped tourism potential and numerous Indigenous economic, social and cultural development opportunities in the Top End including agribusiness, bush foods and traditional medicines, fishing and aquaculture, and caring for country. For example, there is an opportunity to expand the scale of production of the Kakadu plum, which is a native bush food harvested within Kakadu National Park. In 2019, approximately 50 tonnes of Kakadu plum was produced for commercial supply chains in Australia, and an estimated 80% came from the Northern Territory.

The Top End climate, land and aquatic resources makes it ideal for supporting agribusiness. The region currently contributes \$204 million to the economy and provides employment for 489 people. There is an opportunity to grow a number of subsectors within agribusiness including the pastoral industry, including beef and buffalo, horticulture, fisheries and aquaculture and forestry.





## Aquaculture



## Hydrogen



## Minerals

Aquaculture is an emerging industry with the Top End delivering significant commercial fishing operations that contributed \$53 million to the Territory economy in 2021. The region can contribute to future growth of the fisheries industry, with commercial production trials of Blacklip rock oysters, black jewfish, prawns and sea cucumber underway from West Arnhem to the Tiwi Islands.

### Challenges and opportunities

- Addressing the lack of enabling infrastructure in the region could potentially transform life in the Top End.
- Provide access to reliable, safe and affordable water, energy and telecommunications services that are vital to the economic development of the region.
- Improve physical access and connectivity between communities and regional centres to enable essential economic and social development in the region year-round.
- Increase housing supply to attract and grow new industry and supporting existing private sector employers to grow or diversify.
- Increase staff accommodation to allow organisations to offer existing housing to local Aboriginal employees to reduce the reliance on and overcrowding in social housing.
- Increase bandwidth and redundancy in the network, which are essential to ensure sufficient regional digital connectivity to support economic growth across a broad range of industries.
- Improve social infrastructure in the communities to attract workers and visitors to the communities.
- Continue refurbishing and replacing outdated service buildings that are not fit for purpose.



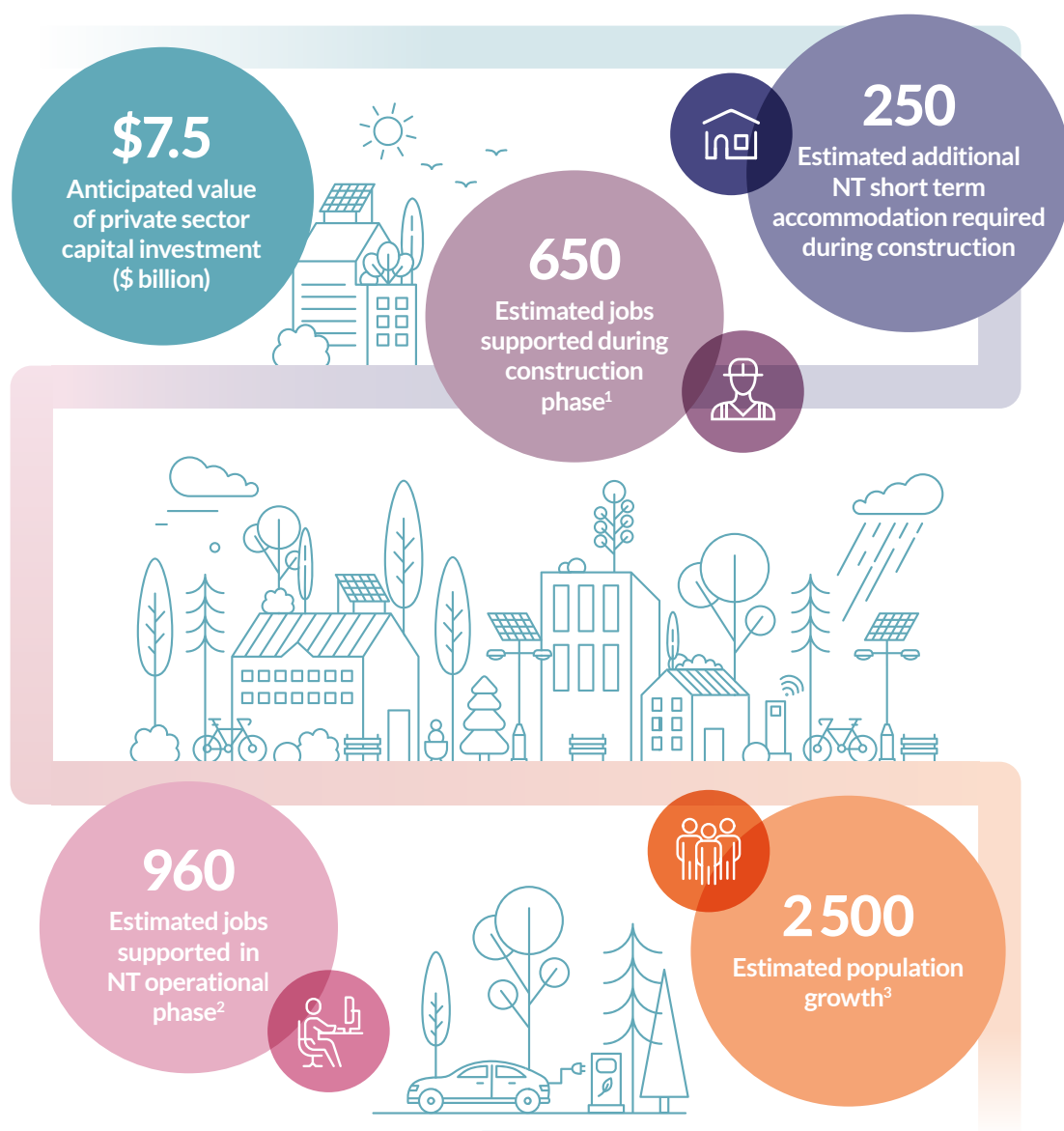
Above: Manton Dam. Credit: Power Water Corporation.

## Investment portfolio

The total Top End investment portfolio has a direct impact on economic and population growth. It is important to understand the magnitude of economic and population growth to inform the enabling infrastructure plan.

Infrastructure NT has worked closely with Investment Territory to determine the total investment portfolio. This analysis determined the following total investments anticipated for the Top End region, subsequent jobs, accommodation needs and population growth.

Analysis is based on Investment Territory 2022–2023 Progress and Outlook: May 2023

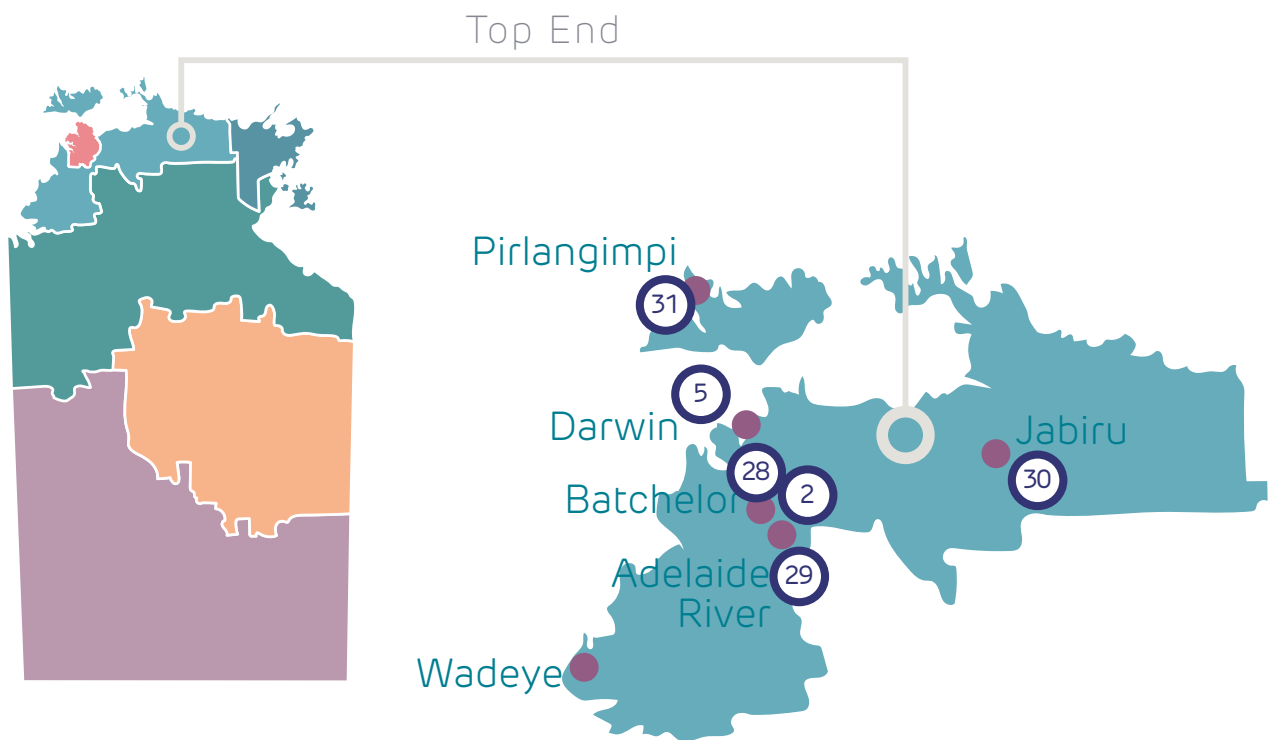


Note 1: Includes direct and indirect where provided by proponents

Note 2: Includes direct and indirect where provided by proponents in the NT only

Note 3: Based on 2.6 multiplier (ABS average persons per household NT regional)

Note: Numbers are approximate over 10 years. Further refined analysis is ongoing.



#### KEY

● Town/city

① Project

*Locations are indicative*

#### TERRITORY-WIDE PROJECTS

④ DCI data centres

⑤ Inlingo Network Unite

⑥ HyperOne

⑦ NEXTDC

①⑥ Northern Territory freight and logistics capacity improvements (regional logistics hubs)

①⑦ Northern Territory remote community power generation program

②⑩ Aurizon – Railway service expansion

## Nationally significant

The following projects, programs and proposals identify and articulate the infrastructure investment that will impact the national economy or achieve national policy objectives and outcomes.

Water

### Darwin region water supply infrastructure upgrades – Adelaide River Off-Stream Water Storage (AROWS) <sup>2</sup>



As the Territory grows, having enough water for the future is critical for people, agriculture and industry. In the Darwin region we are facing challenges because our supply system is operating at its capacity.

New water supply infrastructure is needed to help our population grow in the Territory and to meet our goal of becoming a \$40 billion economy by 2030. Having access to reliable water will help sustain our lifestyle, expand agribusiness and industry development and provide economic growth opportunities for the Territory.

The Adelaide River Off-stream Water Storage (AROWS) project is the Northern Territory Government's long term solution to supply more water to the Darwin region.

Located north of Lake Bennett, the project will take advantage of a naturally occurring basin next to the Adelaide River created by a ridge formation that can hold water. Two main containment barriers will be constructed at low points of the basin so that water can be stored within the basin.

As an off-stream storage, AROWS does not require infrastructure to be built across the Adelaide River, reducing its impacts compared to an in-stream dam. Adelaide River will supply AROWS with water via a controlled pump system during Darwin's wettest months. Water will then be pumped from the AROWS basin, stored, and then piped to the new Strauss Water Treatment Plant. A new pipeline will be installed adjacent to Stuart Highway to transfer water to the Darwin region.

A rigorous 3 to 4 year planning and approvals phase is underway before a commitment can be made to construct and commission the AROWS project by 2031. The Australian Government, through the National Water Grid Fund, has committed \$18 million to support development activities for the AROWS project, such as environmental assessment and design and engineering.

The Northern Territory Government awarded a \$2.4 million tender to undertake the necessary scientific, stakeholder and regulatory processes required to deliver an Environmental Impact Statement for the project.

The Northern Territory Government is releasing a tender to market, seeking a lead engineering consultant to undertake engineering and design work, and produce a Concept Design report for the project.







Connectivity in northern Australia will be faster and more reliable and resilient following the launch of Darwin's first ever direct connection to the global network of high-capacity subsea telecommunications cables.

Vocus' Darwin-Jakarta-Singapore Cable (DJSC) system is a major leap forward in Australia's global connectivity, bridging the digital divide and unlocking new opportunities for growth, innovation and development in the Northern Territory.

The 7700 kilometres DJCS cable system was completed following deployment of a final 1000 kilometre cable, which linked Vocus' existing North-West Cable System, running from Port Hedland to Darwin, to its Perth-based Australia-Singapore Cable – resulting in the first international submarine cable connection into Darwin.

The cable was supported by a \$7.9 million investment from the Northern Territory Government as part of its Terabit Territory strategy.

The project is a significant milestone towards Darwin becoming a major digital hub for the region. It will provide substantial direct and indirect benefits for northern Australia by supporting the connectivity needs of local businesses and communities with more reliable communications. This will benefit a wide range of stakeholders from remote Indigenous communities through to resource operators in the Pilbara by providing low-latency connectivity directly into Asia and enable locals to connect on a global scale.

The cable will also enhance the resilience and security of Australia's international cable network, ensuring uninterrupted and reliable connectivity, including during natural disaster and faults on other cables. This will provide businesses, governments, and individuals with greater confidence and assurance that their communication needs will be met – even in challenging circumstances.

The launch of the Darwin-Jakarta-Singapore Cable will deliver 40 terabits per second of internet capacity between Australia and Asia and pave the way for new data centres in Darwin to put us on the map as a key digital hub.

Further large scale networks are in development.

HyperOne's \$1.5 billion data super highway will be Australia's first hyper scale national fibre network, currently proposed to incorporate 3 routes connecting Darwin to:

- Adelaide, stage 1, (through the spine of the Northern Territory)
- Brisbane (along the Barkly Highway via Townsville)
- Perth (via a subsea connection).

HyperOne's planned network, once complete, will comprise over 20 000 kilometres of new high speed fibre cable across Australia including approximately 2200 kilometres through the Territory, capable of carrying over 10 000 terabits per second.

Hawaiki Nui is a 26 000 kilometre submarine cable connecting New Zealand, Australia, Indonesia, Singapore and the United States.

With a design capacity of 240 terabits, the Spatial Division Multiplexing (SDM) cable system will include up to 20 fibre pairs and link Singapore, Jakarta, Darwin, eastern Australia, the South Island of New Zealand, Hawaii and Los Angeles. The cable is intended to be ready for service in 2027.





Inligo Network Asia Connect (ACC-1) Cable 1 is a privately funded international subsea cable connecting Darwin to South East Asia (Singapore, Medan, Jakarta, Makassar, Dili, Manado and Guam), Japan and the United States. The ACC-1 Cable has 16 fibre pairs with a combined capacity of circa 256 terabits per second. The network will support a minimum of 40×400 gigabit per second wavelengths per fibre pair. This new system will provide an alternate, low latency, high capacity transmission service path between customers in Sydney, Canberra, Melbourne, Adelaide and Darwin with connections into South East Asia and the north Pacific, all delivered on a unified optical platform across the terrestrial and subsea cable systems.

Inligo Network Unite Cable System (Unite) is a private terrestrial fibre network, which will provide additional links:

- Phase 1 is a new link between Darwin and Adelaide
- Phase 2 will extend links from Adelaide to Melbourne, Canberra and Sydney
- Possible subsequent phases are a branch connecting to Papua New Guinea (with potential opportunities to connect Nhulunbuy and Groote Eylandt).

Unite will connect directly into Inligo's ACC-1 Cable system.

The total integration between the international ACC-1 Cable system and the domestic Unite terrestrial system will provide customers seamless connectivity between Darwin, South East Asia, Japan and the United States while also enabling connectivity to the southern capitals, all on the one, fully integrated platform. This functionality will provide Darwin based data centre operators and their customers the shortest routes available into South East Asia and southern Australia, opening up new industries supported by the leading edge connectivity provided by ACC-1 and Unite.

NEXTDC will construct its \$80 million premium grade (D1) data centre in the Darwin CBD. This centre is the key enabler of the Territory Government's Digital Territory Strategy that is aimed at positioning Darwin as a highly competitive location to maximise growth and investment in the local digital economy.

DCI is developing a TIER-Ready III, secure cloud edge data centre, called DRW01, able to support an IT load of up to 10 megawatt with the initial development on a 2.7 hectare site in the Darwin, Palmerston and Litchfield region with an option to expand to 5 hectares. DCI recognises the Northern Territory's position as the digital gateway to Australia's forward-facing defence and space industries, as well as Asia to the north. Darwin is a strategic location in Australia and has already created a digital ecosystem with key elements such as a renewable energy, international and Australia-wide network connectivity.

“All digital highways lead into or through Darwin and that will equal jobs of the future, while growing our digital industry. Driving digital investment in the Territory will open the door to new opportunities for advanced manufacturing, data-centres and cloud-based computing services for Territorians and investors.”

Northern Territory freight rail and logistics capacity improvements (Regional logistics hubs) 16

Logistics and supply chains are fundamental to supporting the viability of projects key to the Northern Territory's economic growth. They also have significant employment and investment impacts in local communities.

Community resilience and social benefits will result from improved local supply chains for consumer and essential goods. This will support the living standards in remote and regional towns needed to support growth and the delivery of private projects.

Improving rail efficiency and intermodal capacity in supply chains will support the NT Government's objective to achieve a \$40 billion economy by 2030 by developing mining, agriculture and energy projects.

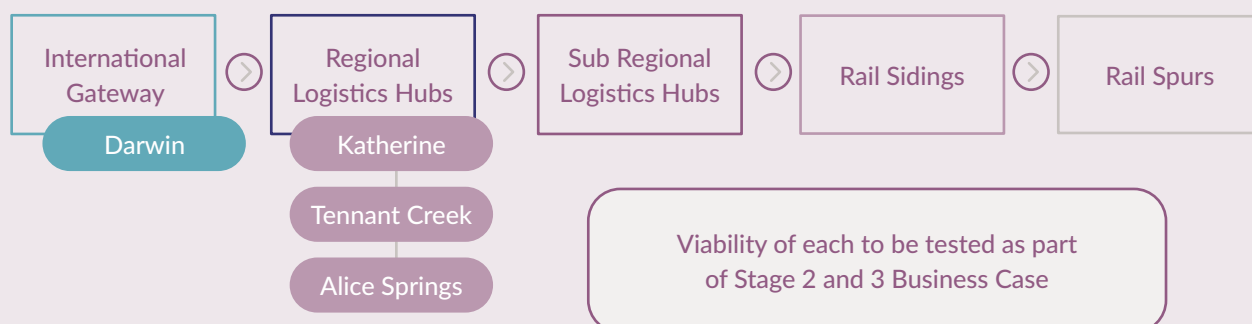
The Northern Territory Government is implementing actions to ensure logistics support rather than constrain industry and economic growth.

The Northern Territory Government has established a solid evidence base of demand for freight and supply chain capacity across agribusiness, minerals and energy, manufacturing, defence, digital and social sectors and is working with the Australian Government and the private sector to meet this demand.

Increases in capacity of port, rail, road, storage and warehousing will be needed to facilitate the growing freight task.

In the Northern Territory's larger communities across the main freight corridor, regional logistics hubs will be developed to consolidate, store and transfer freight between road and rail networks between project and port. These regional logistics hubs will include:

- community distribution facilities to increase resilience in supply chains to distribute food and essential supplies across remote Northern Territory
- skills training facilities to provide real employment opportunities in these communities
- waste recycling facilities, which are essential to enabling a circular economy across the Northern Territory
- strategic staging facilities to enable laydown areas at strategic sites and more capacity and flexibility across the National Land Transport Network
- fuel facilities to enable hub and spoke logistics arrangements to reduce constraints on the road transport industry.





These regional logistics hubs will create the focal points for an increasingly efficient and resilient supply chain to foster a range of benefits.

- **Economy:** every project and development across the Northern Territory relies on transport of goods for construction, production and trade. The time and cost efficiency of this transport flows through to every sector of the economy.
- **Community:** a resilient transport network results in less frequent and less impactful disruption of supply chains. Increasing the proportion of freight that can travel by rail reduces the interface between private road users and heavy freight vehicles.
- **Environment:** reducing the distance freight travels and utilising the optimal freight mode contributes to reducing greenhouse gas emissions.

The Australian Government committed \$440 million in October 2022 in planned equity to support the delivery of the network of regional logistics hubs. The Northern Territory and Australian governments recognise the

significant opportunity to grow the freight catchment area and increase the proportion of freight transported internationally via Darwin.

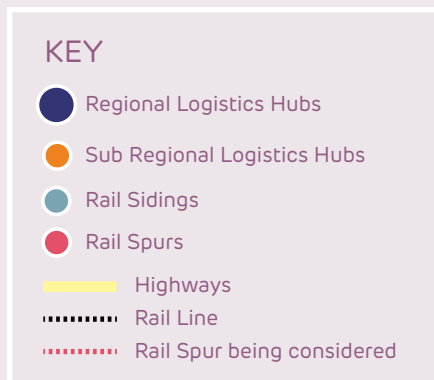
The Northern Territory freight rail and logistics capacity improvements Early Stage Proposal (Stage 1) Business Case was provided to and accepted by Infrastructure Australia in 2023 for inclusion on the Australian Infrastructure Priority List. Work is underway to develop the Potential Investment Options (Stage 2) Business Case.

The estimated total investment proposed from projects in mining, minerals and energy industries across the Northern Territory is over \$38 billion. This investment is estimated to support more than 6 000 construction jobs. Much of the investment and employment increase will occur in remote and very remote regions with higher proportions of First Nations people.



Above: Railway crossing. Credit: Department of Infrastructure, Planning and Logistics.

## NORTHERN TERRITORY REGIONAL LOGISTICS HUBS



Disclaimer: This map is to be used as a guide only.





## Northern Territory remote community power generation program <sup>17</sup>

Renewables



Solar



Lifestyle



The Northern Territory Government, through the Power and Water Corporation's not-for-profit subsidiary Indigenous Essential Services (IES), provides electricity to 72 remote communities and 66 outstations across the Northern Territory.

Power and Water delivers these services through the Department of Territory Families, Housing and Communities on behalf of the Northern Territory Government. This network includes 9093 customer connections across 51 power stations.

Diesel engines are the main technology used to generate electricity for regional and remote communities, with about 25 million litres of diesel used each year.

With the operating costs of transporting diesel to remote communities continuing to increase, the Office of Sustainable Energy is working on strategies to deliver 70% renewable energy penetration to all 72 remote communities.

As the largest isolated off-grid solar program in remote communities, the Solar Energy Transformation Program (SETuP) is a world-first.

Delivery of this strategy is also an action under the Territory Government's Climate Change Response and a recommendation of the Territory Economic Reconstruction Commission to transition Indigenous Essential Service communities to renewable-based systems by 2030.

The strategy builds on the success of the Solar Energy Transformation Program (SETuP). The \$60 million program is co-funded by the Territory Government and the Australian Renewable Energy Agency (ARENA) and delivered 10 megawatts of solar generation to 25 remote communities.











Planning activities are underway to facilitate external investment in renewable remote power systems in communities to maximise opportunities for local industries, create jobs for Territorians and strengthen local skills and expertise.

The Northern Territory Government is progressing detailed analysis of each community to map the optimal renewables development pathway, considering existing energy assets, community aspirations, electricity demand profiles and forecast growth.

In addition to the community focused detailed analysis, the project will identify available land for solar development in each community. It will also include pilot projects and studies to facilitate greater levels of distributed energy supplies and emerging technologies, such as hydrogen and microgrids.

## Implementation pathway

The suggested implementation pathway are actions that can be taken to respond to anticipated economic and population growth challenges and opportunities.

Implementation pathway	Prioritisation action	Progress
<b>Nationally significant projects, programs and proposals</b>		
Submit Stage 1 submission (Early Stage Proposal) to Infrastructure Australia for Northern Territory freight rail and logistics capacity improvements	 Reform	 Achieved
Progress Stage 2 submission (Potential Investment Options) and Stage 3 submission (Investment Ready Proposal) to Infrastructure Australia for Northern Territory freight rail and logistics capacity improvements	 Reform	 In progress
Remove and strengthen the Infrastructure Australia Priority List proposal "Enabling infrastructure and essential services for remote Northern Territory communities in Wadeye, Tiwi Islands, Jabiru"	 Reform	 Achieved
Accelerate planning for and delivery of residential, commercial and industrial land	 Reform	 In progress
Support job creation and business growth across the economy through developing waste recycling facilities in the network of regional logistics hubs, reducing the reliance on interstate waste processing and waste going to landfill	 New	 New 2023 in progress

## Territory-wide

The following projects and proposals identify and articulate the infrastructure investment that will have a Territory-wide impact including an impact on the Top End region.

Transport and  
Logistics

Rail

### Aurizon – Railway service expansion 20



Aurizon, an Australian company with more than 150 years of rail experience, is the nation's largest rail freight business and transports about 250 million tonnes for customers each year. Aurizon brings its scale and capability to the Northern Territory and looks forward to contributing to the NT Government's goal of building a \$40 billion economy by 2030.

In mid-2022, Aurizon invested \$1.4 billion to acquire the One Rail business in the Northern Territory and South Australia, including the Tarcoola to Darwin rail corridor. This investment recognises the strategic value and potential of the business in serving rapidly growing markets for resources, agribusiness, renewable energy and general freight.

The 2240-kilometre Tarcoola to Darwin railway is a nationally significant corridor with direct connection to the Port of Darwin, the closest port to Australia's largest trading partners in Asia. Aurizon is committed to improving the efficiency and capacity of this corridor, with targeted

investment to benefit existing customers and to boost the viability of adjacent agricultural, mineral and energy projects under development.

In the first 12 months of operation, Aurizon has committed investment of more than \$50 million in new assets for the region, as well as preparing plans to increase the number of services along the railway as we respond to increasing customer demand. This also includes the potential opportunity to construct additional passing loops on the rail corridor and to build additional capacity in the Darwin/Berrimah rail terminal at the port.

As well as supporting customer growth and development of regional projects, these investments have the flow-on benefits of increasing local employment and supporting local communities and business. More than 80% of Aurizon's nationwide workforce of 5800 employees live and work in regional communities.



Above: NT railway near Alice Springs. Credit: Department of Infrastructure, Planning and Logistics.



## Enabling infrastructure plan

The enabling infrastructure plan for across the Territory lists the infrastructure proposals that are not yet funded, are in the planning phase and have been identified as enabling an outcome.

Proposals listed respond to economic and/or population growth or address the cross cutting objectives in the NT Infrastructure Strategy 2022 – 2030.

Proposals	Estimated Total \$m	Challenges/opportunities	Timeframe (Years)
Access road upgrades to barge landings and all-weather aerodromes	50	Improve all weather air and sea access to support accessibility, visitor growth and community safety	0-15
Across the Territory upgrade and new bores	•	Support improved water management	0-10
Aerodrome and airstrip upgrades	30	Support connectivity and improve all weather access to improve community safety, accessibility and support future growth	0-15
AFLNT facilities upgrade to support growth in girls and womens football	1	Strengthen a healthy, active lifestyle by improving recreation opportunities and enhance visitor experience	0-5
Barge landing upgrades	150	Support economic development by improving all weather access and goods handling facilities	0-15
Football ovals install lighting	4	Strengthen a healthy, active lifestyle by improving recreation opportunities and enhance visitor experience	0-5
Logistics Network continued expansion	•	Enable economic development by improving supply chains and transport	0-10
Mobile and/or broadband services	33	Enable connectivity and create digital opportunities	0-10
National highways bridge upgrades	40	Improve flood resilience and support accessibility, connectivity and amenity	0-10
Network of fast charging points for electric vehicles at key tourist and rural locations	5	Enable economic development and population growth through tourism led economy	0-10
Park facilities to enhance experience and access for visitors with limited mobility	•	Support accessibility, connectivity and amenity for all visitors	0-10

• indicates value is either commercial in confidence or to be confirmed.

Timeframe					
0-5	0-5 Years	0-10	0-10 Years	0-15	0-15 Years
5-10	5-10 Years	10-15	10-15 Years	15+	15+ Years

Proposals	Estimated Total \$m	Challenges/opportunities	Timeframe (Years)
Rail passing loops	•	Enable economic development by improving supply chains, processing and transport	0-10
Remote Infrastructure Fund upgrade 40+ community facilities to support AFL	200	Strengthen a healthy, active lifestyle by improving recreation opportunities and enhance visitor experience	0-10
Tennant Creek to Darwin common user infrastructure corridor	•	Support the continued development of our regions by providing an infrastructure corridor to enable future services including gas, water, communications and other utilities	0-5
Territory Parks develop new visitor hubs in the Top End, Savannah Gulf, Barkly and Central Australia regions	•	Value, preserve and expand access to parks, increase visitation opportunities and visitor experience	0-15
Territory Parks two-wheel drive access improvements	•	Value, preserve and expand access to parks, increase visitation opportunities and visitor experience	0-15
Territory Parks water security projects	•	Ensure water security to enable commercial opportunities	0-10
Territory Schools air-conditioning mechanical and electrical upgrades	50	Upgrade ageing infrastructure to support the continued delivery of quality education	0-15
Upgrade roads to communities	•	Improve all weather access to support accessibility, growth and community safety	0-15

## Implementation pathway

The suggested implementation pathways outline actions that can be taken to respond to anticipated economic and population growth challenges and opportunities.

Implementation pathway	Prioritisation action	Progress
<b>Territory-wide</b>		
Plan for regional waste facilities	 Reform	 In progress
Develop options to ensure that entry level and affordable housing are in the market, including options to accelerate market participation by community housing providers	 Reform	 In progress
Complete Infrastructure Audit	 Reform	 Achieved

## Infrastructure pipeline

The following is a list of committed Territory-wide projects, funded by either government or the private sector.

Project	Estimated \$m				Challenges/opportunities
	Total	2023-24	2024-25	Outer Years	
Across all regions upgrade critical water tanks	15.2	1.5	6.0	•	Support population growth by improving access to quality water
Across all regions water main replacement	14.4	2.9	4.5	•	Support population growth by improving access to quality water
Across all regions water services minor works	33.0	13.0	15.0	•	Support population growth by improving access to quality water
Alice Springs to Darwin corridor (Stuart Highway) road safety improvements	62.3		50.0	•	Increase road capacity, safety, support accessibility, connectivity and amenity
Community Housing Provider housing projects	7.0	•			Provide safe, secure and affordable housing for people on low incomes
Community Housing Provider redevelopment projects	4.4	4.4			Provide safe, secure and affordable housing for people on low incomes
Darwin-Katherine Transmission Line (DKTL) secondary systems upgrade	9.0	6.0			Asset renewal to support growth, compliance and improve service efficiency
Digital Connectivity Program	7.5	•	•	•	Enabling connectivity and creating digital equality
Government Employee Housing Build Program	186.0	48.0	30.0	•	Provide Government employees with safe, secure and appropriate housing while performing duties in remote locations
Government managed Remote Women's Safe House upgrades and remote play equipment	1.4	1.0			Support vulnerable people by improving community service facilities
Homeland housing and infrastructure upgrade program	77.0	•	•	•	Capital grant to upgrade ageing infrastructure to support communities
Homeland Learning Centres infrastructure upgrades	1.0		1.0		Upgrade ageing infrastructure to support the continued delivery of quality education
Indigenous Essential Services asset replacement	84.0	21.0	21.0	•	Support remote communities by improving essential services efficiency

A lesser figure in the 2023–24 and 2024–25 columns than in the Total column indicates either previous year expenditure or expenditure in outer years.

• indicates value is either commercial in confidence or to be confirmed.



Project	Estimated \$m				Challenges/opportunities
	Total	2023-24	2024-25	Outer Years	
Indigenous Essential Services capital improvements	21.0	7.0	7.0		Support remote communities by improving essential services efficiency
Indigenous Essential Services headworks to support development	70.0			•	Support population growth by increasing land availability
Information communications technology (ICT) cabling upgrades in schools	8.0	1.0			Enable connectivity and create digital opportunity
Infrastructure to support Territory Families, Housing and Communities remote services expansion	11.3	11.2			Improve outcomes for children and families
Mobile oral health dental unit replacement	0.7	0.7			Strengthen liveability by improving infrastructure to support oral health services
Planning works to support the development of land infrastructure planning, concept development and detailed design	41.0	4.0	4.0	•	Enable economic development and population growth by increasing land availability
Power Networks augmentation and capital projects	164.0	43.0	36.0	•	Asset renewal to support growth, compliance and improve service efficiency
Public Housing new builds	8.5	•			Provide safe, secure and affordable housing for people on low incomes
RAAF Base Darwin and Mt Bunday Training Area – National Airfields Works	351.0			•	Maintenance to maximise existing infrastructure
Rail upgrades to support growth	•	25.0	25.0	•	Maintenance to maximise existing supply chain and transport infrastructure
Regional Logistics Hubs	440.0	10.0	50.0	•	Enable economic development by improving supply chains and transport
Remote Women's Safe House upgrades managed by Non-Government Organisation (NGO)	1.6	•			Capital grants to support vulnerable people by improving community service facilities
Replace critical asset elements in various hospitals, remote health clinics, schools and police stations	20.0	•	•	•	Ensure a safe and healthy work environment and best practice in the delivery of government services
Road Safety Program, including intersection upgrades, improvements for pedestrian safety, street lighting, truck parking bays, rest areas	267.0	15.0	80.0	•	Support connectivity, regional development and safety by improving key arterial and secondary roads

Project	Estimated \$m				Challenges/opportunities
	Total	2023-24	2024-25	Outer Years	
Roads to Recovery Program targeted local road upgrades	24.7	•	•		Enhance road infrastructure to support accessibility, connectivity, safety and amenity
Security enhancements to police facilities	9.0	2.0	2.0	•	Support the continued delivery of quality police services
Targeted road safety projects, local roads and community infrastructure shovel ready projects	67.5	20.0	7.6		Australian and Northern Territory governments supporting infrastructure construction jobs across the Territory
Territory Schools air-conditioning mechanical and electrical upgrades	4.0	2.0			Upgrade ageing infrastructure to support the continued delivery of quality education
Training areas and ranges – United States Force Posture Initiative	711.0	•	•	•	Upgrade infrastructure to enhance defence capability and operations



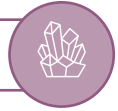
Above: Tiwi Island solar project. Credit: Power and Water Corporation.

## Regionally significant

The following projects, proposals and programs identify and articulate the infrastructure investment that will have an impact on the Top End region.

Minerals

### Core Lithium – Finiss Lithium Project <sup>(28)</sup>



Core Lithium owns 100% of the Finiss Lithium Project, located 88 kilometres' trucking distance by sealed road to Darwin Port.

The flagship Finiss Project lies within one of the most prospective areas for lithium in the Territory – the Bynoe Pegmatite Field – and covers over 500 square kilometres of granted tenements.

Core Lithium made the Final Investment Decision on Thursday 30 September 2021 to proceed with the Finiss Lithium Project on the Cox Peninsula. First production is anticipated at the Grants Lithium open cut mine and processing plant before the end of 2022.

The BP33 Project, which also forms part of the overall Finiss Lithium Project, is currently undergoing its environmental impact assessment process. If approved, this stage of the Finiss Lithium Project will start once mining at the Grants site finishes.

This is the first new significant mine in the Northern Territory in more than a decade and will create 250 jobs during construction and operation.

Minerals

Major Project

### Mt Bundy (Toms Gully, Rustlers Roost and Q29) <sup>(29)</sup>



Mt Bundy Gold Project proposes to restart 3 mines – Tom's Gully, Rustlers Roost and Quest 29 – and construct a 4.5 million tonnes per annum processing plant at Rustlers Roost (proposed largest new gold processing plant in

the region). Rustlers Roost and Q29 are both open pits and Tom's Gully is an underground mine. The proposed plant and mining operation will produce gold doré ingots.



## Sustainable future of Jabiru and Kakadu 30

Lifestyle



Tourism



Health



Education



Solar



The Territory and Australian governments are committed to a strong and sustainable future for Jabiru and are investing \$411.5 million to support its transition from a mining town to a vibrant and sustainable tourism hub and service centre for Kakadu National Park and the West Arnhem region.

The Territory Government continues to work towards delivering priority projects identified in its \$135.5 million commitment to the Future of Jabiru.

- Work has commenced with assessment and upgrades to essential services infrastructure, including power, water, sewerage and waste management.

- A contract has been awarded and work has commenced to design the Bininj Resource Centre. This is scheduled to be completed in 2023 with construction to commence in 2024.
- A new solar hybrid power station has been completed and has been powering Jabiru since January 2022.
- Construction of the new Jabiru medical centre is well underway with completion expected in late 2023.

The Northern Territory Government has continued to maintain government service levels in Jabiru and is into its fourth year of commitment.

## Tiwi H2 Project 31

Renewables



Solar



Hydrogen



Major Project



Provaris Energy Ltd (Provaris) proposes to develop the Tiwi H2 Project, which is a green hydrogen production and export facility located on Melville Island within a 30 kilometre radius of Port Melville. Project works include construction of a solar precinct, overhead electricity transmission infrastructure, electrolyser facility, desalination plant, battery storage facilities, hydrogen compression and loading facilities, high pressure pipelines (for hydrogen ship loading) and expanded accommodation facilities at Port Melville.

Provaris will use its innovative compressed hydrogen ships to transport hydrogen to the South East Asia region and is targeting first production in late 2027 with operations expected to continue for approximately 30 years.

The project will scale up to 2.6 gigawatt solar generation to produce up to 90 000 tonnes per annum of green hydrogen for export to the South East Asia region.

## Enabling infrastructure plan

The enabling infrastructure plan for the Top End region lists the infrastructure proposals that are not yet funded, are in the planning phase or have been identified as enabling an outcome.

Proposals listed respond to economic and/or population growth or address the cross cutting objectives in the NT Infrastructure Strategy 2022 – 2030.

Proposals	Estimated Total \$m	Challenges/opportunities	Timeframe (Years)
Across the region accommodation cabins	1	Support council operations, community services, generate local jobs and skills training	0-5
Across the region new or refurbished health clinics	•	Strengthen liveability by improving infrastructure to support health services	0-15
Across the region Remote School Renewal Program	•	Upgrade ageing infrastructure to support the continued delivery of quality education	0-15
Across the region upgrade access road network to Homelands	2	Enhance infrastructure to support accessibility, connectivity, safety and amenity	0-5
Adelaide River Off-Stream Water Storage (AROWS)	2000	Support economic and population growth through a secure, reliable and cost-effective water supply	0-10
Adelaide River Showground develop Equestrian Centre of Excellence	4	Develop Adelaide River as the equestrian centre for the Top End	15+
Adelaide River tri-services hub	24	Support the continued delivery of quality police, fire and emergency services in communities	0-10
Adelaide River War Cemetery construct car park and upgrade Memorial Terrace	2	Improve recreation opportunities and enhance visitor experience	0-10
Adelaide River waste transfer station	1	Support council operations and community services	5-10
Arnhem Highway upgrades (other than Adelaide River Floodplain and road duplication)	20	Support economic development of the tourism, defence, mining, extractive and livestock industries	5-10
Arnhem Link Road improve road standard	•	Improve regional and remote community connectivity	0-15
Batchelor aged care accommodation facility independent and assisted living	2	Provide a variety of contemporary, affordable and sustainable housing options for older Territorians	15+

Timeframe					
	0-5 Years		0-10 Years		0-15 Years
	5-10 Years		10-15 Years		15+ Years

• indicates value is either commercial in confidence or to be confirmed.

Proposals	Estimated Total \$m	Challenges/opportunities	Timeframe (Years)
Batchelor Airport upgrade	•	Support connectivity and improve all weather access to improve community safety and to support future growth	0-5
Batchelor Area School upgrade camp dormitories	2	Upgrade ageing infrastructure to support the continued delivery of quality education	0-5
Batchelor to Darwin River construct sealed arterial roads	5	Enable economic development through improved road infrastructure	5-10
Batchelor Township Resilience and Adaptation Master Plan support and recreational infrastructure and night lighting	10	Support council operations, community services, generate local jobs and skills training	0-10
Batchelor waste minimisation and recycling facility	1	Support improved waste management and recycling processes	5-10
Cox Peninsula bike path/boardwalk from Mandorah Jetty along beachfront and Wagait Tower Road	4	Strengthen a healthy, active lifestyle by improving recreation opportunities and enhance visitor experience	0-5
Cox Peninsula new extension and upgrades to council Office, Chambers and Library buildings	1	Enhance infrastructure to support development	0-5
Cox Peninsula new NT Emergency Services (NTES) volunteer and storage facilities	2	Strengthen emergency support services in rural communities	0-15
Cox Peninsula re-seal all sealed roads in the estate	3	Road improvement to increase safety, support accessibility, connectivity and amenity	0-5
Cox Peninsula upgrade beach access points at end of Erickson Crescent, Baluria Road and Wagait Tower Road	2	Strengthen a healthy, active lifestyle by improving recreation opportunities and enhance visitor experience	0-5
Dundee Beach multi-purpose sporting complex/cyclone shelter	8	New recreational infrastructure to support liveability and resilience	0-15
Finniss Valley new roads within Chin Estate	2	Enhance infrastructure to support accessibility, connectivity, safety and amenity	0-10
Future of Jabiru and Kakadu Jabiru luxury lodge precinct 90 rooms	50	Support growth in luxury tourism, visitor and corporate travel markets	0-10
Gapuwikyak (Lake Evella) multi-purpose sporting complex/cyclone shelter	10	New recreational infrastructure to support liveability and resilience	0-10
Gunbalanya asbestos removal in council buildings	1	Support council operations, community services, generate local jobs and skills training	0-5



Proposals	Estimated Total \$m	Challenges/opportunities	Timeframe (Years)
Gunbalanya council plant shed workshop	2	Support council operations, community services, generate local jobs and skills training	0-5
Gunbalanya council sporting oval facilities	4	Strengthen a healthy, active lifestyle by improving recreation and youth facilities	0-5
Gunbalanya council staff accommodation and asbestos remediation	10	Support council operations, community services, generate local jobs and skills training	0-10
Gunbalanya multi-purpose hall/cyclone shelter	10	New recreational infrastructure to support liveability and resilience	5-10
Gunbalanya new NT Emergency Services (NTES) volunteer and storage facilities	2	Strengthen emergency support services in remote communities	0-15
Gunbalanya new police complex	15	Support the continued delivery of quality police services in remote communities	10-15
Gunbalanya police housing	5	Support the continued delivery of quality police services in remote communities	0-10
Gunbalanya reseal internal roads	3	Road improvement to increase safety, support accessibility, connectivity and amenity	0-10
Gunbalanya School replace administration building and upgrade ageing infrastructure	3	Upgrade ageing infrastructure to support the continued delivery of quality education	0-15
Gunbalanya waste transfer station	8	Support council operations, community services, generate local jobs and skills training	0-5
Haynes Road realignment and seal	1	Develop and support the cattle industry	0-15
Heathers Lagoon Road upgrades	1	Enhance infrastructure to support accessibility, connectivity, safety and amenity	0-15
Jabiru multi-purpose sporting complex/ cyclone shelter	10	New recreational infrastructure to support liveability and resilience	0-10
Jabiru new grandstand at Brockman Football Oval	2	Strengthen a healthy, active lifestyle by improving recreation and youth facilities	0-5
Jabiru upgrade pool/gym facilities	1	Strengthen a healthy, active lifestyle by improving recreation and youth facilities	0-5
Jabiru waste transfer station	7	Support council operations, community services, generate local jobs and skills training	0-5
Kakadu Road upgrades stage 2	70	Improve year round accessibility, supporting the tourism industry	5-10

Proposals	Estimated Total \$m	Challenges/opportunities	Timeframe (Years)
Litchfield National Park upgrades improve access, camping facilities and amenity	2	Value, preserve and expand historic, cultural meeting places, increase visitation opportunities and visitor experience	0-10
Maningrida additional police housing (stage 2)	13	Support the continued delivery of quality police services in remote communities	0-10
Maningrida asbestos removal in council buildings	4	Support Council operations and generate local jobs and skills training	0-5
Maningrida council staff accommodation	2	Strengthen liveability through improved infrastructure to support council services	0-5
Maningrida council visitor accommodation	2	Strengthen liveability through improved infrastructure to support council services	0-5
Maningrida council workshop	2	Strengthen liveability through improved infrastructure to support council services	0-5
Maningrida cyclone shelter	15	Build resilient communities and enhanced liveability by improving community facilities	0-10
Maningrida Football Oval new grandstand	4	Strengthen a healthy, active lifestyle by improving recreation and youth facilities	0-5
Maningrida new NT Emergency Services (NTES) volunteer and storage facilities	3	Strengthen emergency support services in remote communities	0-10
Maningrida reseal internal roads	4	Road improvement to increase safety, support accessibility, connectivity and amenity	0-10
Maningrida School new early years classrooms and play areas and upgrade and extend middle years buildings	4	Master planned infrastructure to provide contemporary educational facilities to support growth in early years learning enrolments	0-10
Maningrida School refurbish upper primary buildings	2	Upgrade ageing infrastructure to support the continued delivery of quality education	5-10
Maningrida swimming splash pool shade	1	Strengthen a healthy, active lifestyle by improving recreation and youth facilities	0-5
Maningrida Top Camp Road storm water drainage	3	Road improvement to increase safety, support accessibility, connectivity and amenity	0-5
Maningrida waste transfer station	9	Support council operations, community services, generate local jobs and skills training	0-5
Milikapiti (Snake Bay) multi-purpose sporting complex/cyclone shelter	10	New recreational infrastructure to support liveability and resilience	0-10
Milikapiti council workshop renovations	1	Support council operations, community services, generate local jobs and skills training	5-10

Proposals	Estimated Total \$m	Challenges/opportunities	Timeframe (Years)
Milikapiti police housing	3	Support the continued delivery of quality police services in remote communities	0-15
Minjilang (Mamaruni) School replace preschool	2	Contemporary educational infrastructure to support growth in early years learning enrolments	0-10
Minjilang council staff accommodation	1	Strengthen liveability through improved infrastructure to support council services	0-10
Minjilang council visitors accommodation	2	Strengthen liveability through improved infrastructure to support construction in the community	0-5
Minjilang reseal internal roads	3	Road improvement to increase safety, support accessibility, connectivity and amenity	5-10
Minjilang waste transfer station	9	Support council operations, community services, generate local jobs and skills training	5-10
Murganella Road upgrade including drainage upgrade	9	Generate local jobs and skills training to enhance liveability, health and community outcomes	0-5
Naiyu (Daly River) multi-purpose sporting complex/cyclone shelter	10	New recreational infrastructure to support liveability and resilience	0-10
Naiyu (Daly River) regional town development residential and commercial/ industrial land release	3	Enable economic development and population growth by increasing land availability	5-10
Naiyu (Daly River) tri-services hub	18	Support the continued delivery of quality police, fire and emergency services in remote communities	5-10
Peppimenarti community hub	6	Support council operations, community services, generate local jobs and skills training	0-5
Peppimenarti multi-purpose sporting complex/cyclone shelter	8	New recreational infrastructure to support liveability and resilience	0-10
Pirlangimpi council workshop renovations	1	Support council operations, community services, generate local jobs and skills training	5-10
Pirlangimpi new NT Emergency Services (NTES) volunteer and storage facilities	2	Strengthen emergency support services in remote communities	0-15
Pirlangimpi pontoon ferry service between Wurrumiyanga and Pirlangimpi	1	Support connectivity and improve all weather access to improve community safety and to support future growth	0-5
Pirlangimpi replace police housing	4	Support the continued delivery of quality police services in remote communities	0-5
Port Keats Road upgrade complete unsealed sections of Port Keats Road and widen Daly River Bridge	150	Economic enabler for the extractive industry and key national freight route between the Territory and the rest of Australia	0-15

Proposals	Estimated Total \$m	Challenges/opportunities	Timeframe (Years)
Robin Falls Recreation Area day visit eco-infrastructure	3	Develop tourism product while protecting the local environment	5-10
Strickland Road upgrades	1	Enhance infrastructure to support accessibility, connectivity, safety and amenity	5-10
Tiwi Islands develop greenfield sites for aquaculture, agriculture, tourism and industrial purposes	•	Support the development of local industry and create a sustainable economy	0-10
Tiwi Islands reseal all community and outbound roads in Wurrumiyanga, Milikapiti and Pirlangimpi	2	Support economic development of the region, improving safety and connectivity	0-10
Tiwi Islands road upgrades stage 2	100	Support economic and social development of the region, improving connectivity	5-10
Tiwi Islands visitor accommodation and supporting hospitality facilities	•	Enable economic development and population growth through tourism	0-10
Top End Parks upgrade and new gauging stations	•	Support improved water management	0-10
Wadeye multi-purpose sporting complex/cyclone shelter	20	New recreational infrastructure to support liveability and resilience	0-10
Wadeye new NT Emergency Services (NTES) volunteer and storage facilities	3	Strengthen emergency support services in remote communities	0-10
Wagait Beach Cloppenburg Park Master Plan new skatepark, rebuild pump-track, resurface tennis courts and new shade roof	2	Strengthen a healthy, active lifestyle by improving recreation opportunities and enhance visitor experience	0-5
Wagait Beach multi-purpose sporting complex/cyclone shelter	10	New recreational infrastructure to support liveability and resilience	0-10
Wagait replace Centre Yard Zone Substation	•	Asset renewal to support growth, compliance and improve service efficiency	10-15
Waruwi asbestos removal in council buildings	1	Ensure a safe and healthy work environment and best practice in managing asbestos containing materials for council controlled buildings	0-5
Waruwi construct council office	4	Support council operations, community services, generate local jobs and skills training	0-5
Waruwi construct council visitors accommodation	2	Support council operations, community services, generate local jobs and skills training	0-5
Waruwi council amenities	1	Strengthen liveability through improved infrastructure to support council services	0-5



Proposals	Estimated Total \$m	Challenges/opportunities	Timeframe (Years)
Waruwi reseal internal roads	2	Road improvement to increase safety, support accessibility, connectivity and amenity	0-10
Waruwi waste transfer station	9	Support council operations, community services, generate local jobs and skills training	0-5
Wildman River Agricultural Precinct	20	Develop production area to take advantage of good quality agricultural land and available water resources	0-5
Woodycupaldiya Road upgrade	8	Improve all weather access to support accessibility, growth and community safety	0-5
Wooliana Road realign, upgrade and seal local fishing and tourist roads	2	Enable all weather access to improve recreation opportunities and enhance visitor experience	10-15
Wurruyanga additional housing for council staff	5	Support continued delivery of council services in remote communities	0-5
Wurruyanga airstrip terminal welcome and meeting place	1	Support economic development of the region, improving connectivity and tourism opportunities	0-5
Wurruyanga council workshop renovations	1	Support council operations, community services, generate local jobs and skills training	0-10
Wurruyanga police complex	16	Support the continued delivery of quality police services in remote communities	0-15

## Implementation pathway

The suggested implementation pathway outlines action that can be taken to respond to anticipated economic and population growth challenges and opportunities.

Implementation pathway	Prioritisation action	Progress
<b>Top End</b>		
Progress Kakadu road upgrades	 New	 In progress

## Infrastructure pipeline

The following is a list of committed projects, funded by either government or the private sector, for the Top End region.

Project	Estimated \$m				Challenges/opportunities
	Total	2023-24	2024-25	Outer Years	
Across the region culvert repairs at Peppimenarti, Emu Point and Namarluk access roads	0.3	•			Enhance infrastructure to support accessibility, connectivity, safety and amenity
Across the region HomeBuild new homes	•	•	•	•	Reduce overcrowding and improve health outcomes while providing employment and training opportunities for local Aboriginal people
Across the region land servicing headworks scoping, design and construction	7.0	•			Enable economic development and population growth through expanded utilities networks for new land development
Across the region residential infill lots, design and construct power and water infrastructure, upgrades and network extensions to service nominated infill lots	5.9	•			Enable economic development and population growth through expanded utilities networks for new land development
Across the region residential subdivision planning, design and construction	42.3	7.7			Enable economic development and population growth through expanded utilities networks for new land development
Across the region Room to Breathe home extensions	41.4	16.1	12.0	•	Reduce overcrowding and improve health outcomes while providing employment and training opportunities for local Aboriginal people
Across the region upgrade internal road network	2.0			•	Enhance infrastructure to support accessibility, connectivity, safety and amenity
Adelaide River water source augmentation and treatment	2.3	•			Support population growth by improving access to quality water
Archer waste transfer facility cardboard compactor	0.2	0.2			Support improved waste management and recycling processes
Arnhem Highway Adelaide River Floodplain stage 2 (Beatrice Hill)	31.6	9.3			Improve flood immunity at the Adelaide River crossing
Arnhem Link Road improve road standard	16.0	9.5		•	Improve regional and remote community connectivity
Bathurst Island mortuary upgrade	0.3	•			Improve infrastructure for essential services
Cocos (Keeling) Islands airfield upgrade	567.0	•	•	•	Enhance defence capability and operations

A lesser figure in the 2023-24 and 2024-25 columns than in the Total column indicates either previous year expenditure or expenditure in outer years.

• indicates value is either commercial in confidence or to be confirmed.

Project	Estimated \$m				Challenges/opportunities
	Total	2023-24	2024-25	Outer Years	
Coomalie Community Government council solar installations	1.0	•			Improve liveability and improve energy efficiency by increasing renewable energy
Darwin River Dam new pump station	36.3	15.3	0.1		Support population growth by improving access to quality water and providing resilience to Darwin's water supply
Dundee Beach recreational fishing infrastructure	7.0	0.5	6.5		Enhance recreational fishing and the Territory's reputation as a world class fishing destination
Finniss Lithium Project Core Lithium Ltd stage 2 – BP33 early works package – underground mine	45.0	45.0	•		Part of Core Lithium's Finniss Lithium project developing lithium and diversified metals used for new and emerging technologies
Future of Jabiru and Kakadu health, education, roads, government, NBN and tourism facilities	411.5	50.0	50.0	•	Position Jabiru, post-mining, as a tourism and regional services hub
Gunbalanya football oval lights	1.6		1.5		Capital grant to strengthen liveability through improved sporting infrastructure
Gunbalanya health centre and morgue	20.0	10.0	10.0		Strengthen liveability by improving infrastructure for health support services
Holtze glass reprocessing plant	0.7	0.7			Support improved waste management and recycling processes
Jabiru distribution network upgrade	•	•			Asset renewal to support growth, compliance and improve service efficiency
Kakadu Mobiles Co-investment Program	7.5	•	•	•	Enabling connectivity and creating digital opportunity
Kakadu National Park various road upgrades	68.6	5.0	30.0	•	Improve access to iconic tourism product to grow visitation, the economy and increase liveability
Mandorah new marine facilities	85.5	40.0	40.0	•	Enhance infrastructure to support connectivity and development
Maningrida Arts and Culture and Djomi Museum upgrades	5.0	5.0			Value, preserve and expand art and cultural places, through the Arts Trail Gallery Extension Program
Maningrida new police station, housing, visiting officer quarters, multifunction room/ court house, associated boat and storage sheds, communications tower and backup generator	17.1	16.7	•		Support the continued delivery of quality police services in remote communities

Project	Estimated \$m				Challenges/opportunities
	Total	2023-24	2024-25	Outer Years	
Maningrida School undercover walkways	0.6	•			Contemporary educational infrastructure to support growth in population and student enrolments
Maningrida Top Camp Road reconstructions	0.9		0.9		Road improvement to increase safety, support accessibility, connectivity and amenity
Manton Dam return to service including Strauss to Middle Arm pipeline project to support industry development and provide water security to the Darwin region	189.0		46.2	•	Support economic and population growth by improving access to quality water
Manton Solar Photovoltaic Station connection	•	•			Expand and diversify the Territory's power grid to improve efficiency and to meet Northern Territory renewables target of 50% by 2030
Marindja Road flood immunity improvements lift pavement through floodplain and upgrade to 2 lane seal for priority sections	6.2		5.0	•	Support economic development of the cattle industry and improve community connectivity
Marrakai Road seal between Stephen Road and Arnhem Highway	7.5		7.5		Enhanced liveability through improved roads
Milikapiti water park	0.8	•			Strengthen a healthy, active lifestyle by improving recreation and youth facilities
NT Bullion Frances Creek operations reopen the iron ore mine to extract remnant ore from existing open cut pits	7.0	•			Meet global demand for minerals
Palumpa School refurbish canteen and staff ablution facility	0.6	•			Contemporary educational infrastructure to support growth
Peppimenarti library and community space	0.4	•			Support community services
Peppimenarti multi-purpose police complex, including associated housing, multifunction room/court house and supporting site infrastructure	19.0		19.0	•	Support the continued delivery of quality police services in remote communities
Peppimenarti upgrade waste management facilities	0.2	•			Support improved waste management and recycling processes
Port Keats Road upgrade between Wadeye and Palumpa	75.0		30.0	•	Economic enabler for the extractive industry and key national freight route between the Territory and the rest of Australia



Project	Estimated \$m				Challenges/opportunities
	Total	2023-24	2024-25	Outer Years	
Primary Gold Mt Bundy Gold Project to develop Toms Gully, Rustlers Roost and Quest 29 sites	412.0	100.0	100.0	•	Meet global demand for minerals
Ranger mine rehabilitation remove infrastructure	1600.0	•	•	•	Rehabilitate the Ranger mine in consultation with stakeholders
Rum Jungle rehabilitation	500.0	100.0	100.0	•	Rehabilitate the area in consultation with stakeholders
Tiwi Islands road upgrades	75.0	15.0	12.0	•	Support economic and social development of the region, improving connectivity
Wadeye aerodrome airstrip pavement and seal widening	2.0			•	Support connectivity and improve all weather access to improve community safety and to support future growth
Wadeye Airport Road upgrade and seal	0.8	•			Enhance infrastructure to support accessibility, connectivity, safety and amenity
Wadeye Government Business Centre fitout	1.0	1.0			Enhance services and liveability, health and community outcomes in regional towns and remote communities
Wadeye pedestrian bridge and walkway	1.3	•			Enhance infrastructure to support accessibility, connectivity, safety and amenity
Wadeye renal facility	1.4	1.4			Strengthen liveability by improving infrastructure for health support services
Wadeye upgrade barge landing and hardstand	2.5			•	Improve all weather access to support accessibility, growth and community safety
Wadeye upgrade waste management facilities	0.7	•			Support improved waste management and recycling processes
Wagait Beach Cloppenburg Park Master Plan repurpose existing compound for community recycle and re-use program	0.1	•			Support improved waste management and recycling processes
Wurruyiyanga child and family centre (Starting Early for a Better Future)	0.5	•			Strengthen early years learning and engagement of students and parents
Wurruyiyanga swimming pool redevelopment	0.8	0.8			Strengthen a healthy, active lifestyle by improving recreation and youth facilities
Wurruyiyanga waste management and recycling hub	2.0		2.0	•	Support improved waste management and recycling processes

## NT Infrastructure Audit

Reliable infrastructure is a vital part of maintaining and improving our quality of life. It provides us with essential services we rely on like transport, energy, water and telecommunications, as well as social infrastructure such as hospitals and health centres, schools, policing and parks and access to goods and services.

In 2022 and 2023, Infrastructure NT conducted a strategic audit of Territory infrastructure to provide an evidence base to guide future infrastructure investment decision making. The outcomes of the audit focus attention on the investments and reforms that will improve our living standards and local and national productivity.

The audit revealed a number of potential infrastructure needs for the Top End region. Where these needs were already in the planning phase, they have been included in the Enabling Infrastructure Plan or Infrastructure Pipeline tables in this document. The remaining Top End region audit items are listed below. These potential infrastructure needs are for projects that could be considered for possible inclusion in the Plan and Pipeline over time as scoping, feasibility analysis and business case development determines viability. Industry, business and community stakeholders are encouraged to let Infrastructure NT know if they progress with planning and delivery of those needs and proposals.



### Transport and Logistics

- Cold storage facilities
- Improve roads to industry
- Jabiru collection and packing hub for Kakadu plum
- Regional industry hubs
- Wadeye commercial infrastructure to develop new supermarkets and food businesses



### Utilities

- Cox Peninsula waste transfer station



### Social Infrastructure

- Belyuen upgrade recreation centre
- Gunbalanya youth centre and basketball facility upgrades
- Milikapiti community sports facilities and oval upgrades
- Milingimbi new sporting lights
- Minjilang community basketball courts
- Nganmarriyanga improve recreation facilities
- Peppimenarti sport hub upgrades
- Pirlangimpi community sports facilities upgrades
- Regional Training and Employment Hub
- Tiwi Island sporting hub
- Wadeye facilities upgrades at hall and BMX track
- Wurrumiyanga community sports facilities and oval upgrades



### Land

- Agriculture and pastoral developments
- Aquaculture developments
- Storm water drainage improvements

The Top End region is one of 6 regions in the Northern Territory.

To download the full NT Infrastructure Plan and Pipeline or the NT Infrastructure Audit visit

<https://infrastructure.nt.gov.au>





Above: Pontoon at Bathurst Island. Credit: Department of Chief Minister and Cabinet.





## About Infrastructure NT

Infrastructure NT is the Northern Territory's infrastructure body. Infrastructure NT undertakes strategic infrastructure planning and development that co-ordinates and aligns infrastructure needs with economic and population growth.

## Connect with us

If you would like to connect with Infrastructure NT on the NT Infrastructure Plan and Pipeline 2023 or any other infrastructure matters, you can contact us via:

**Email:** [Infrastructure.NT@nt.gov.au](mailto:Infrastructure.NT@nt.gov.au)

**Phone:** +61 8 8936 5696

**Post:** Infrastructure NT  
GPO Box 2520, Darwin, NT, 0801

Published by the Department of Infrastructure,  
Planning and Logistics

© Northern Territory Government 2023

E: [Infrastructure.NT@nt.gov.au](mailto:Infrastructure.NT@nt.gov.au)

T: +61 8 8936 5696

Web page: <https://Infrastructure.nt.gov.au>

Address: Infrastructure NT, Department of  
Infrastructure, Planning and Logistics,  
Level 3, 18-20 Cavenagh Street, Darwin City

ISSN: 2653-4266

This work is licensed under a Creative Commons Attribution 4.0 International Licence, with the exception of the Northern Territory Government logo and images. Creative Commons Attribution 4.0 International Licence is a standard form licence agreement that allows you to copy, communicate and adapt this work provided that you attribute the work to the Northern Territory Government (Department of Infrastructure, Planning and Logistics) and abide by the other licence terms <https://creativecommons.org/licenses/by/4.0/>

The material contained in this document is made available for your use, but the Northern Territory Government and its employees do not guarantee that the document is without flaw of any kind and therefore disclaims all liability for any error, loss or other consequence that may arise from your use. The document is made available on the understanding that the Northern Territory Government is not providing professional advice, and that users exercise their own skill and care with respect to its use, and seek independent advice as necessary.

