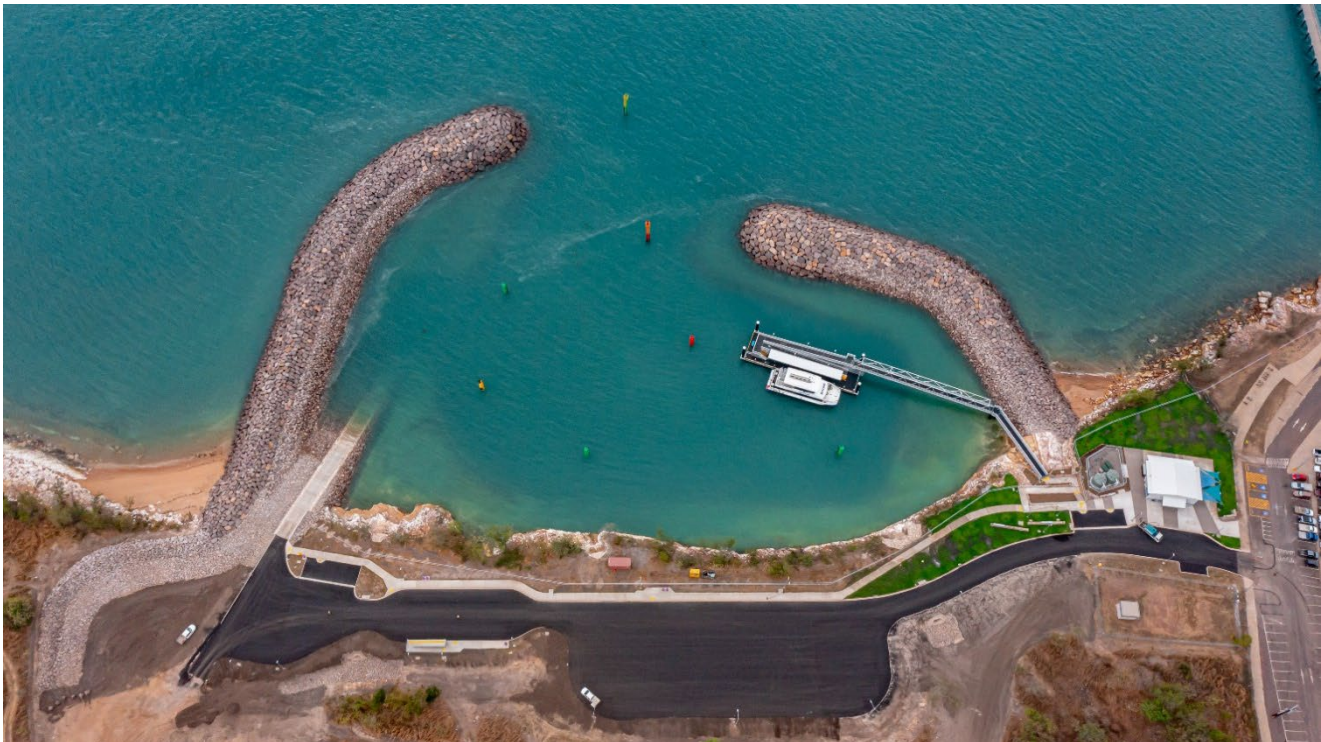


Mandorah Marine Facilities



Construction completed

The Department of Logistics and Infrastructure has completed the construction of the Mandorah Marine Facilities project.

The new facilities provides access improvements for people with disability and people who need mobility assistance, including wheelchairs and prams.

The new facility includes a gangway platform leading to a floating pontoon that features bench seating and shade for ferry users. The pontoon is designed for a capacity of 150 people.

The *Disability Discrimination Act* (DDA) compliant facility features a ferry terminal, boat ramp, new car and trailer parks, accessible parking and an accessible boat platform next to the boat rigging bay to enable people to get in and out of their boats from a raised platform before they launch their boat.

An extended car park includes a new bus parking bay and 4 accessible car parks at the top of the access ramp to gangway.

The access ramp is clad with porcellanite rock excavated from the site during construction. Landscaping around the new ferry terminal is being irrigated by an innovative and sustainable water storage and sewerage treatment plant on site.

Commissioning for the new facility, in particular the ferry operations, is underway and the facility is expected to be open to the public from 16 August 2025. A further official opening announcement to stakeholders will be made the day prior to the opening.

As the marine infrastructure project transitions into an operational phase it enters a defects liability period for this custom designed and manufactured marine infrastructure. The facility will be monitored and if necessary, adjusted during this period.

The final design was adapted from the initial master plan and informed by engagement with the community and key stakeholders.

Construction of the new facility was staged to take advantage of dry season conditions and to prioritise the dredging activity, quarry material stockpiling and constructing the 2 breakwaters before the onset of the 2024 wet season.

Approximately 80,000 tonnes of rock was used to build the 2 breakwaters, which form the new basin to provide protection from sea swells and wave action.

Marine safety

Recreational boat users need to be aware that ferry vessels have right of way in the new marina. When entering the new marina and entrance channel, vessels must:

- give ferry vessels right of way
- keep as near to the outer limit of the channel on her starboard side as safely as possible
- pass on the port (left/red sidelight) side of each other.

For more marine safety information on recreational boating safety in the new marina please visit the [Northern Territory Government Marine Safety website](#).

The boat ramp is estimated to be accessible at a low tide of 2.5 metres minimum, based on a large vessel with a 0.9 metre draft. Similar to most boat ramps in Darwin Harbour, the new boat ramp is accessible at most tides, with availability 80% of the time at this low tide and 100% during the neap tidal range.

Local content

The \$85 million project was delivered by SMC Marine. More than 90% of the subcontractors and suppliers engaged by SMC Marine for the project – 193 out of 213 – were awarded to Territory businesses, with the remainder of contracts being for very specialised disciplines.

Local Aboriginal business enterprises involved in the project, including the early works, includes Quality Constructions and Maintenance, PattCon, Intract Australia, Banksia Civil, Absolute Signage NT, Bulmeka Contracting, Top End Line Marking and Countryman Safety. Belyuen Community Government Council also supplied workers during the project.

A total of 404 people have been employed to work on the project since construction started in 2024, including 35 Aboriginal people.

SMC Marine has contributed \$62,700 in community benefit for Wagait Beach and Belyuen residents by supporting the Belyuen Community Government Council's mobile Kenbi Kafe, supporting the Cox Country Club and its activities, funding an electronic message board at the Wagait Shire Council offices and donation of excess rock to local community groups.