



NORTHERN TERRITORY GOVERNMENT

Construction Snapshot

December 2015



Concept: Chan Building - dedicated visual art gallery redevelopment - a new gallery for Museum and Art Gallery of the Northern Territory (MAGNT) (Smith Street perspective)

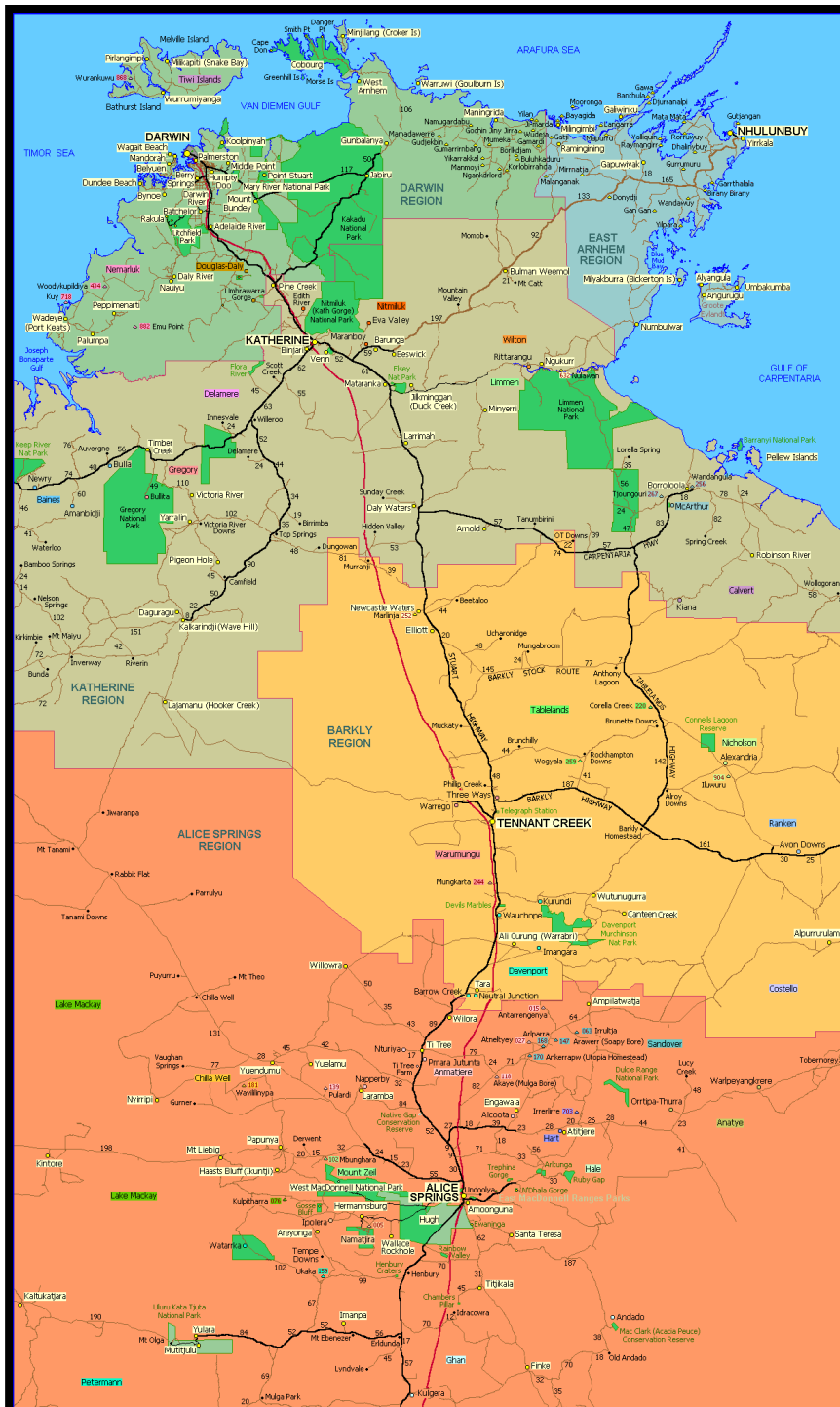
The Department of Infrastructure publishes *Construction Snapshot* on a quarterly basis. The information provides an overview of the Northern Territory's construction activity for major works over \$500 000. It reflects work that is both currently underway and potential future construction-related work as at 31 December 2015.

Table of Contents

IN PROGRESS	1
TERRITORY WIDE	1
CENTRAL AUSTRALIA.....	2
BARKLY REGION	4
KATHERINE REGION	5
EAST ARNHEM REGION	6
TOP END RURAL	7
PALMERSTON AND LITCHFIELD	8
DARWIN ENVIRONS	10
PROPOSED	14
TERRITORY WIDE	14
CENTRAL AUSTRALIA.....	14
BARKLY REGION	17
KATHERINE REGION	19
EAST ARNHEM REGION	21
TOP END RURAL	23
PALMERSTON AND LITCHFIELD	23
DARWIN ENVIRONS	25
DISCLAIMER	29
CONTACT	29

IN PROGRESS

TERRITORY WIDE	Est. \$M	Anticipated Completion
COOPERATIVE PROJECTS		
Expand mobile phone services and broadband into communities	30.0	Q2 2019
DEFENCE PROJECTS		
Phase 3 Defence Terrestrial Communications Network Facilities upgrades	TBA	Q1 2016



Map: Northern Territory



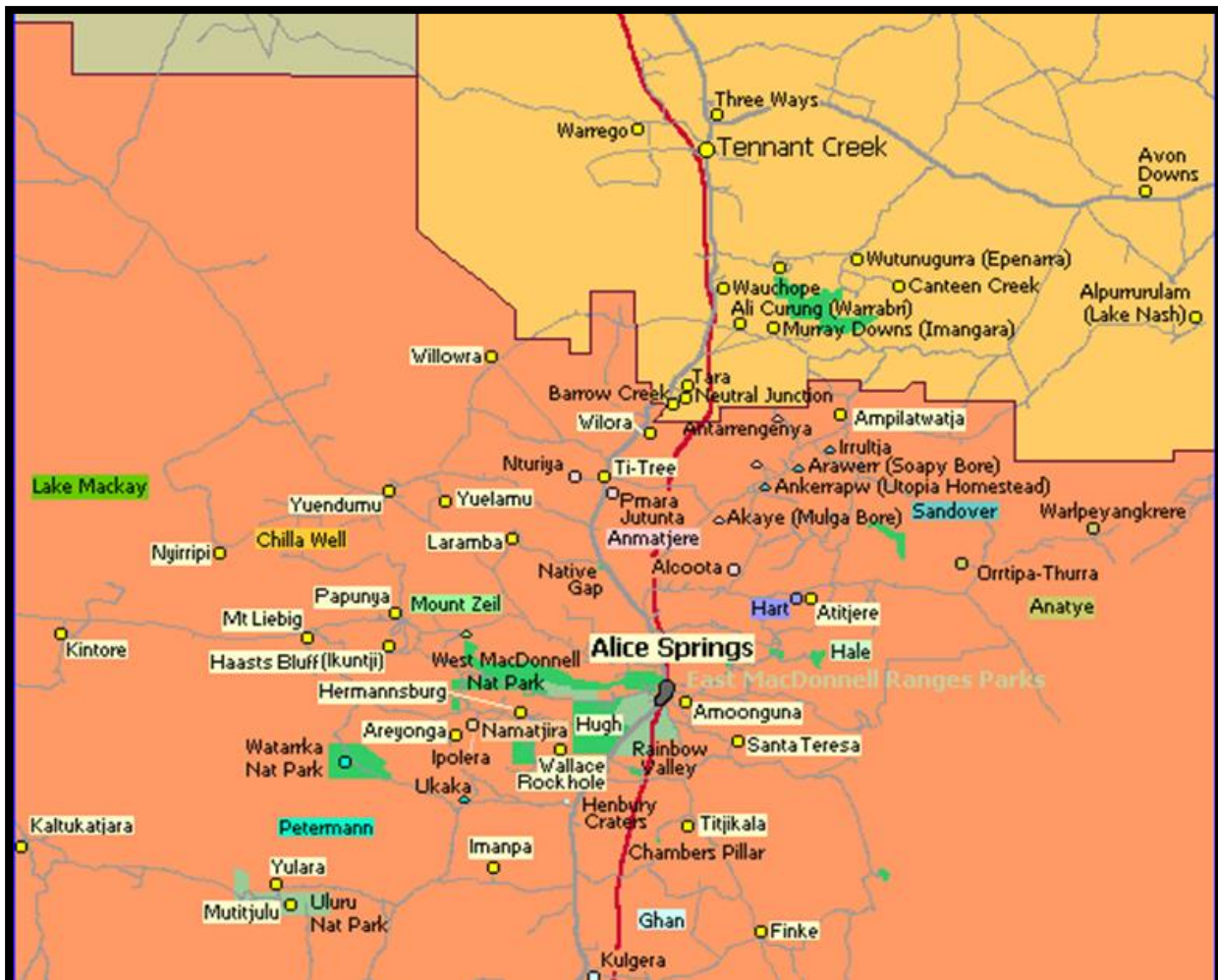
Photos: Tjukururu Road (Docker River Road)

CENTRAL AUSTRALIA	Est. \$M	Anticipated Completion
NORTHERN TERRITORY GOVERNMENT PROJECTS		
Alice Springs Correctional Centre - expansion to Cottages Precinct	0.5	Q1 2016
Kaltukatjara - health clinic	2.6	Q1 2016
Kilgariff - land release 1B	1.9	Q1 2016
Motor Vehicle Registry to Telegraph Road - urban beautification	1.4	Q1 2016
Larapinta Drive and Lovegrove Drive - intersection improvements (roundabout)	4.4	Q1 2016
Stuart Highway - Stuart's Well and Hugh River Stock Route Intersection upgrades	1.0	Q1 2016
Ti Tree School - Block B – air-conditioning upgrade	0.7	Q1 2016
Construction of Tjukururu Road chainage 177.15 km to chainage 181.41 km and Upgrade and Sealing of Docker River Aerodrome	7.3	Q2 2016
Alice Springs Paths and Tracks Connectivity Project - tourism paths	2.5	Q2 2016
Larapinta Drive - Aldridge and Lovegrove	0.6	Q2 2016
Larapinta Primary School - New Child and Family Centre	4.6	Q2 2016
Mulga Park Road - lift and regravell chainage 200 - 234 km at various points	0.7	Q2 2016
Plenty Highway (Outback Way) - upgrade and seal chainage 96.8 to 108.87 km	4.1	Q2 2016
Stuart Highway - Motor Vehicle Registry to Telegraph Road - upgrade	3.0	Q3 2016
Tanami Road - upgrade and seal	7.0	Q3 2016
Ilpeye Ilpeye – subdivision headworks	6.0	Q3 2016



Photo: Tanami Road upgrade and seal

CENTRAL AUSTRALIA (Cont.)	Est. \$M	Anticipated Completion
Alice Springs Hospital		
Alice Springs Hospital - Teaching and Training Facility	4.8	Q1 2017
Alice Springs Hospital - upgrade emergency power and electrical systems (stage 1)	2.0	Q2 2016
Alice Springs Hospital - decant ward and corridors rectification	4.9	Q3 2016
Alice Springs Hospital - fire rectification works	19.7	Q3 2018
Government Employee Housing (GEH)		
Nyirripi - construct Government Employee Housing duplex on lot 152	0.8	Q2 2016
Stronger Futures NT - Indigenous Housing (SFNT)		
Areyonga - 30 remote housing upgrades	2.6	Q2 2016
Kaltukatjara (Dockers River) - 46 remote housing upgrades	3.8	Q2 2016
Mount Liebig - 26 remote housing upgrades	2.4	Q2 2016
COOPERATIVE PROJECTS		
Alice Springs Supreme Court building	14.0	Q3 2016
MINING AND PETROLEUM SECTOR PROJECTS		
Spinifex Bore - garnet sand surface mining and processing operation	14.4	Q1 2016
PRIVATE SECTOR PROJECTS		
Alice Springs - lots 8146 and 8147 Parsons Street - new Supreme Court and office building	20.0	Q2 2016
East Side - 6 Winnecke Avenue - complex of 4 units	1.5	Q3 2016



Map: Central Australian Region

BARKLY REGION	Est. \$M	Anticipated Completion
NORTHERN TERRITORY GOVERNMENT PROJECTS		
Elliott - health clinic	4.8	Q1 2016
Tablelands Highway - strengthening and widening the existing pavement sections from chainage 40-43 km	1.5	Q1 2016
Tablelands Highway - strengthen 3 bridges - North and South Brunette, and Creswell	2.75	Q2 2016
Government Employee Housing (GEH)		
Alekarengge - construct Government Employee Housing on lot 285	0.7	Q2 2016
National Partnership Agreement on Remote Indigenous Housing (NPARIH)		
Tennant Creek - remote housing NPARIH upgrades	0.5	Q2 2016
PRIVATE SECTOR PROJECTS		
Tennant Creek - 15 Stuart Street - 10 by 2 bedroom dwellings	1.5	2017



Photos: Tablelands Highway - strengthening and widening the existing pavement sections from chainage 40-43 km

KATHERINE REGION	Est. \$M	Anticipated Completion
NORTHERN TERRITORY GOVERNMENT PROJECTS		
Gorrie Road - install 6 concrete inverts at selected sections	0.8	Q1 2016
Katherine Court House - redesign	1.0	Q1 2016
Ngukurr - remote health clinic	5.4	Q1 2016
Roper Highway - widen and seal at various locations - 26 -27.6 km and 28.7 - 30.4 km	2.2	Q1 2016
Stuart Highway - Dunmarra 650 – 652 km improve flood immunity raise and lifting highway	2.0	Q1 2016
Victoria Highway - Bridge Guard Rail Extension at King River	0.6	Q1 2016



Photos: Katherine Court House

NORTHERN TERRITORY GOVERNMENT PROJECTS (Cont.)		
Yarralin Airstrip - upgrade and seal	2.5	Q1 2016
Amanbidji Road - construct concrete floodway at chainage 0.5 km	0.6	Q2 2016
Katherine - Central Region - Bituminous Resurfacing of Various Roads and Highways	3.5	Q2 2016
Kintore Street School - new administration facility	2.6	Q2 2016
Roper Highway - upgrade 3 truck bays at chainage 37.65 56 and 86.1 km	1.5	Q2 2016
Buntine Highway - strengthen and widen	10.0	Q3 2016
Carpentaria Highway – pavement strengthening and widening Borroloola Jump Up chainage 229.0 – 233 km	2.1	Q3 2016
Roper Highway - widen and seal 52.9 - 53.7 km	2.1	Q3 2016
Victoria Highway – Saddle Creek Crossing upgrade	11.0	Q3 2016
Roper Highway - Roper River / Wilton River - high level bridge crossings and road upgrade	44.0	Q4 2017
Roper Highway - strengthen and widen various chainages between 55.3 km and 99.1 km	7.8	Q4 2016



Photos: Yarralin Airstrip, before works and during

KATHERINE REGION (Cont.)	Est. \$M	Anticipated Completion
Stronger Futures NT - Indigenous Housing (SFNT)		
Amanbidji - remote housing, new builds and upgrades	1.3	Q2 2016
Bulla - remote housing upgrades	2.9	Q2 2016
Bulman / Weemol - remote housing upgrades	1.4	Q2 2016
Kybrook Farm - remote housing upgrades	0.8	Q2 2016
Peppimenarti - remote housing upgrades	4.1	Q2 2016
POWER WATER CORPORATION PROJECTS		
Katherine Power Station - life extension - Mars fuel and control system	4.9	Q2 2016
DEFENCE PROJECTS		
RAAF Base Tindal - married quarters extension - 50 houses	TBA	TBA

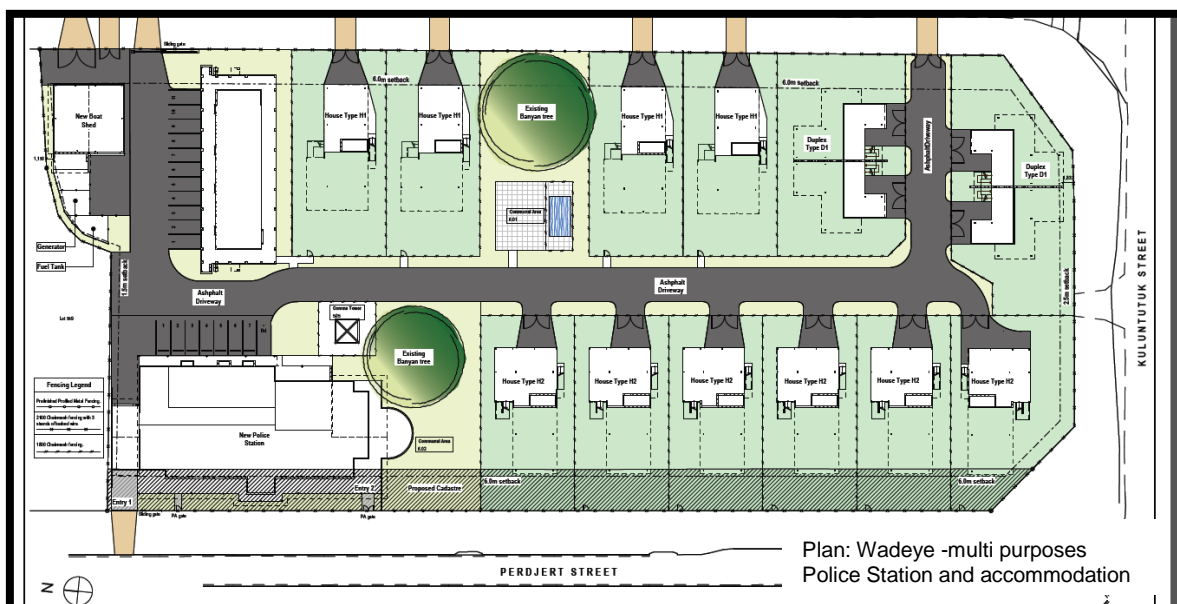
EAST ARNHEM REGION	Est. \$M	Anticipated Completion
NORTHERN TERRITORY GOVERNMENT PROJECTS		
Galiwinku - Shepherdson College - Trade Training Centre	1.6	Q1 2016
Gove District Hospital - staff accommodation fire upgrade	2.5	Q1 2016
Nhulunbuy High School - home economics upgrade	1.5	Q1 2016
Ramingining - demolish and replace 2 dwellings (cyclone recovery)	1.2	Q1 2016
East Arnhem - Trade Training Centre	3.2	Q2 2016
Galiwinku - demolish and replace 20 dwellings (package 1)	10.7	Q2 2016
Galiwinku - demolish and replace 20 dwellings (package 2)	14.6	Q2 2016
Central Arnhem Road – Rocky Bottom Creek new bridge	15.0	Q3 2016
Umbakumba - health clinic	6.4	Q4 2016



Photo: Ramingining, lot 122, demolish and replace 2 dwellings (cyclone recovery)

EAST ARNHEM REGION (Cont.)	Est. \$M	Anticipated Completion
Government Employee Housing (GEH)		
Milingimbi - construct Government Employee Housing - 2 by 2 bedroom standalone dwellings	1.2	Q1 2016
National Partnership Agreement on Remote Indigenous Housing (NPARIH)		
Umbakumba - construct housing	1.2	Q2 2016
Warruwi - remote housing, new builds and upgrades	TBA	Q2 2016
COOPERATIVE PROJECTS		
Pickertaramoor Road - upgrade (part 2)	2.0	Q3 2016
Cobourg Peninsula - Seven Spirit Bay - upgrades	2.0	Q3 2016
Nhulunbuy - Gove Yacht Club - upgrades - stages 1 and 2	0.5	2018
PRIVATE SECTOR PROJECTS		
Maningrida area - Arnhem Land Barramundi Nature Lodge – upgrades and 12 new luxury en-suited safari tents	1.2	Q3 2016
Near Ramingining - Murwangi Safari Camp – renovations to existing homestead, luxury kitchen and 12 new luxury en-suited safari tents	1.8	Q3 2016

TOP END RURAL	Est. \$M	Anticipated Completion
NORTHERN TERRITORY GOVERNMENT PROJECTS		
Goulburn Island - Warruwi School - multipurpose hall and cyclone shelter	4.2	Q1 2016
Litchfield Park - Florence Falls site - coach and carpark upgrade	0.6	Q1 2016
Litchfield Park - Magnetic Termite Mounds site - new boardwalk, upgrades to existing boardwalk and a new toilet block	0.8	Q1 2016
Litchfield Park - Sandy Creek Campground redesign to provide 7 additional campsites and a new toilet block	0.8	Q1 2016
Maningrida - Remote School Attendance Strategy (RSAS) - Ablution Block	0.6	Q1 2016
Maningrida - Trade Training Centre	1.2	Q1 2016
Rural - drainage upgrades	1.9	Q1 2016
Litchfield Park Road - seal selected sections	4.9	Q2 2016
Mary River - saltwater intrusion mitigation	0.6	Q2 2016
Jungawa Road - upgrade and seal chainage 6.5 - 9.3 km	2.6	Q3 2016
Port Keats Road - flood immunity	9.7	Q3 2016
Goulburn Island - Warruwi School - multipurpose hall and cyclone shelter	4.2	Q1 2016
Maningrida - upgrade transport access - barge landing	1.2	Q4 2016
Yellow Creek crossing	7.5	Q4 2016
Wadeye - multi purposes Police Station and accommodation	31.1	Q3 2017



TOP END RURAL (Cont.)	Est. \$M	Anticipated Completion
POWER WATER CORPORATION PROJECTS		
Howard East Borefield access road, pipe works and bore equipping	10.1	Q1 2016
Wadeye – gas fired power station	13.9	Q1 2016
Darwin River Dam - new pump station	28.0	Q2 2019
Government Employee Housing (GEH)		
Minjilang - construct Government Employee Housing	0.9	Q1 2016
National Partnership Agreement on Remote Indigenous Housing (NPARIH)		
Milikapiti - remote housing, new builds	TBA	Q1 2016
PRIVATE SECTOR PROJECTS		
Finniss River area - new resort	TBA	Q3 2017

PALMERSTON AND LITCHFIELD	Est. \$M	Anticipated Completion
GOVERNMENT PROJECTS		
Lambrick Avenue - cycle path	1.0	Q1 2016
Marine Supply Base - Stage 2	115.0	Q1 2016
Tiger Brennan Drive / Roystonea Avenue - off ramp	2.0	Q1 2016
Elrundie Avenue / Bonson Terrace - intersection upgrade	0.5	Q2 2016
Stuart Highway / Temple Terrace - intersection	9.0	Q2 2016
Berrimah - Multi User Barge Ramp	15.0	Q3 2016
Fog Bay Road - Leviathan Creek Crossing upgrade	2.6	Q3 2016
Palmerston Special School - stage 1	23.5	Q3 2016
Roystonea Avenue duplication - Temple Terrace to Terry Drive	11.0	Q4 2016
Roystonea Avenue upgrade - Temple Terrace to Gurd Street	5.5	Q4 2016
Palmerston Regional Hospital Headworks	18.0	Q4 2016



Photos: Palmerston Special School

Palmerston East		
Palmerston East - Zuccoli southern HV electrical reticulation	3.6	Q1 2016
Palmerston East - Zuccoli west sewer pump station and rising main	6.2	Q1 2016
Palmerston East - Zuccoli subdivision - stage 2	40.0	Q2 2018
Palmerston East - Zuccoli subdivision - stage 3 and 4 - 750 lots, primary school and neighbourhood shopping centre	107.8	Q4 2021
Palmerston East - Zuccoli subdivision - stage 5 - 430 new lots	43.3	Q4 2021
COOPERATIVE PROJECTS		
Palmerston Regional Hospital	165.0	Q2 2018
Urban Public Housing (UPH)		
Johnston - Angel Road and Redwood Street - 8 Urban Public Housing dwellings	2.6	Q2 2016
POWER WATER CORPORATION PROJECTS		
Strangways Zone - substation replacement	26.5	Q2 2016
Johnston - new water tank to service the suburbs of Bellamack, Zuccoli, Rosebery, Johnston and Palmerston South	13.9	Q3 2016
Channel Island Power Station - life extension	55.0	Q3 2017

PALMERSTON AND LITCHFIELD (Cont.)	Est. \$M	Anticipated Completion
DEFENCE PROJECTS		
Robertson Barracks - Land Force Mortar replacement	4.0	Q2 2016
COUNCIL PROJECTS (CITY OF PALMERSTON and LITCHFIELD SHIRE COUNCIL)		
Acacia Hills - Byers Road / Manton Valley Road upgrade	1.0	Q2 2016
Humpty Doo - Freds Pass Road / Redcliffe Road intersection	8.2	Q2 2016
Litchfield municipality – annual reseal program	1.8	Q2 2016
Yarrowonga Road - reconstruction	2.5	Q4 2016
PRIVATE SECTOR PROJECTS		
Johnston - 30 Polglaze Circuit - 11 by 3 bedroom ground level units	2.8	Q1 2016
Johnston - 4 Gayler Court - Paradise Villas - duplex style complex of 12 units	3.6	Q1 2016
Johnston - Farrar Boulevard - MacKillop Catholic College - stage 3	4.0	Q1 2016
Moulden - 79 Tamarind Road - complex of 8 units	2.0	Q1 2016
Bakewell - 1 Mannikan Court - Woolworths Complex including 10 specialty shops and petrol station	30.0	Q2 2016
Bellamack - 127 Flynn Circuit - ONE27 Flynn - mixed use development within 3 buildings	20.0	Q2 2016
City Views Industrial Estate - Wedding Road - 2 warehouses with office / shopfront	1.5	Q2 2016
Farrar - 3 Inverway Circuit - complex of 4 executive homes	2.0	Q2 2016
Farrar - 33 Bauldry Avenue - Jade - complex of 13 by 2 storey townhouses	4.0	Q2 2016
Johnston - 21 Polglaze Circuit - duplex	0.6	Q2 2016
Palmerston - Gateway Shopping Centre	300.0	Q2 2016
Rosebery - 164 Forrest Parade / Haydon Street - commercial and medical centre with petrol station	5.0	Q2 2016
Wishart Industrial Estate - Fowlstone Road - office / showroom complex	2.0	Q2 2016
Zuccoli - 62 Paperbark Crescent - 2 by 3 bedroom multiple dwelling in a single storey building	0.5	Q2 2016
Johnston - 11 Tarakan Court - 5 by 4 storey apartments	TBA	Q3 2016
Maluka Views development - mixed use precinct (retail, commercial, residential)	25.0	Q3 2016
Coolalinga Shopping Village	TBA	Q4 2016
Durack - Charles Darwin University - real estate sub-division	160.0	Q4 2020
Holtze - 4 Mighall Road - industrial warehouse	TBA	TBA



Photo: Durack Heights – Neighbourhood Centre

PALMERSTON AND LITCHFIELD (Cont.)	Est. \$M	Anticipated Completion
INPEX Ichthys LNG Project		
INPEX - civil site preparation, major foundations and services	TBA	Q3 2016
INPEX - construct LNG tanks	TBA	Q3 2016
INPEX - LNG train on-site installation and hook up	TBA	Q1 2017



Photo: INPEX - LNG train on-site installation and hook up

DARWIN ENVIRONS	Est. \$M	Anticipated Completion
NORTHERN TERRITORY GOVERNMENT PROJECTS		
Darwin - Youth Justice Court - fit out	0.8	Q1 2016
Darwin - Youth Justice Court - new holding cells	0.6	Q1 2016
Darwin CBD - Development House - level 1 fit out	TBA	Q1 2016
Darwin CBD - Jacana House fit out	TBA	Q1 2016
Darwin CBD - NAB Building - level 3 fit out	1.7	Q1 2016
Darwin Supreme Court - conversion works	0.7	Q1 2016
Darwin Waterfront - Jervois Park - coastal protection and remediation	1.5	Q1 2016
Hidden Valley Road - civil and erosion control upgrades	1.0	Q1 2016
Ludmilla Creek Trunk Drain - rectification works	1.4	Q1 2016
Malak - Hindu Community Centre - cyclone shelter	0.9	Q1 2016
Stuart Highway and Amy Johnson Avenue intersection - extension of slip lane	0.7	Q1 2016

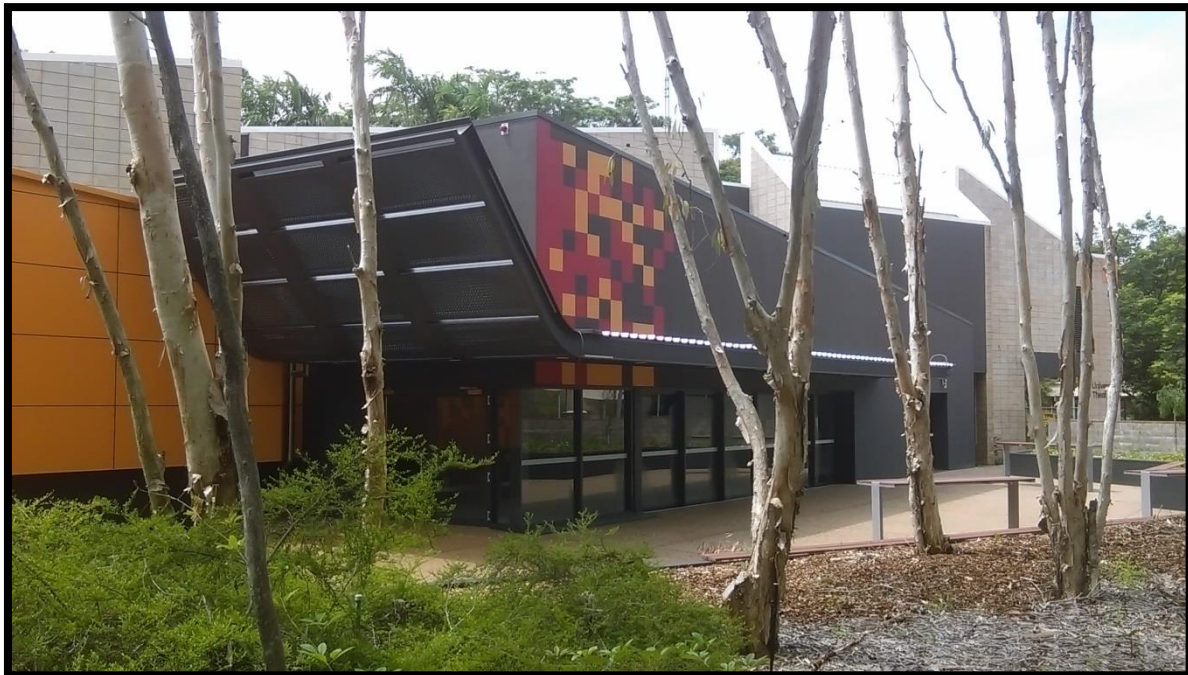
DARWIN ENVIRONS (Cont.)	Est. \$M	Anticipated Completion
NORTHERN TERRITORY GOVERNMENT PROJECTS		
Darwin High School - Open Education Centre	14.2	Q2 2016
Darwin Waterfront - stage 6 and 7 - fuel facility, decontamination, west Bennett Street, environmental (5 year project)	26.0	Q2 2016
Hidden Valley Motor Sports Complex - Pit Garage - permanent air-conditioned viewing structure / Corporate Booth	2.0	Q2 2016
Royal Darwin Hospital - reconfigure external front entrance, including public transport infrastructure and landscaping	5.5	Q2 2016
Tiger Brennan Drive - duplication - Woolner Road to Berrimah Road	88.0	Q3 2016
Henbury Special School - new school	33.0	Q3 2016



Concept: Hidden Valley Motor Sports Complex - Pit Garage - permanent air-conditioned viewing structure / Corporate Booth

DARWIN ENVIRONS (Cont.)	Est. \$M	Anticipated Completion
Royal Darwin Hospital		
Royal Darwin Hospital - upgrade negative pressure isolation rooms	7.4	Q1 2016
Royal Darwin Hospital - paediatric facility upgrade / refurbishment	15.0	Q3 2016
Urban Public Housing (UPH)		
Stuart Park - Graham Street - 2 by 2 Bedroom Urban Public Housing dwellings	0.8	Q2 2016
COOPERATIVE PROJECTS		
Fannie Bay - 8 Conacher Street - lawn bowls facilities - shade structure and carpark addition	1.5	Q2 2016
Berrimah - Truck Central - fuel stop and transport service hub	TBA	2017
POWER WATER CORPORATION PROJECTS		
Parap - trunk sewer upgrade	7.5	Q1 2016
Casuarina Zone - substation - outdoor switchyard	20.9	Q2 2017
DEFENCE PROJECTS		
Shoal Bay receiving station - replacement of chillers	3.0	Q1 2016
HMAS Coonawarra Health Centre - Joint Health Command - interim garrison health facilities upgrade	4.0	Q2 2016
RAAF Base Darwin - flood mitigation	10.0	Q2 2016
Defence Housing Australia - RAAF Darwin married quarters redevelopment	TBA	2016
COUNCIL PROJECTS (CITY OF DARWIN)		
Darwin CBD - Tamarind Park - upgrade	0.5	Q1 2016
Darwin Esplanade - addition of a new bike path and more trees - Daly Street to Herbert Street	3.3	Q1 2016
Shoal Bay Waste Disposal site - construction of North and South leachate pond	0.8	Q1 2016

DARWIN ENVIRONS (Cont.)	Est. \$M	Anticipated Completion
PRIVATE SECTOR PROJECTS		
Berrimah - 47 Boulter Road - Boulter Estate - 44 by 2 bedroom dwellings	11.0	Q1 2016
Casuarina - Charles Darwin University – Theatre refurbishment	5.5	Q1 2016
Darwin CBD - Cavenagh Street - Cav Hotel refurbishment	2.0	Q1 2016
Darwin International Airport Precinct - solar power plant including 16,000 solar panels	13.0	Q1 2016
East Arm - water bottling plant	12.5	Q1 2016
Fannie Bay Racecourse - race track underpass	0.7	Q1 2016
Parap - 41 Gregory Street - Lot 2723 - veterinary hospital with underground parking	2.4	Q1 2016
Stuart Park - 29 Duke Street - complex of 16 units	4.0	Q1 2016
Winnellie - 102 Coonawarra Road - warehouse units	TBA	Q1 2016
Winnellie - 17 Raphael Road - cold storage and office	2.0	Q1 2016
Darwin CBD - Woods Street - Magnum apartments	14.0	Q1 2017
Berrimah - 41 Boulter Road - Orchid Gardens - 44 by 2 bedroom dwellings	11.0	Q2 2016
Berrimah - 645 Stuart Highway - 2 by warehouses with showrooms	1.8	Q2 2016
Darwin CBD - 12 Harvey Street - Tech 01 Apartments	26.0	Q2 2016
Darwin CBD - 8 Shepherd Street - 9 storey residential complex	20.0	Q2 2016
Darwin CBD - additional accommodation at the Mirambeena Resort	TBA	Q2 2016
Darwin CBD - Cavenagh Street - Energy House facade upgrade	2.1	Q2 2016
Darwin CBD - office fit out	8.5	Q2 2016



Photos: Charles Darwin University – Theatre Refurbishment

DARWIN ENVIRONS (Cont.)	Est. \$M	Anticipated Completion
PRIVATE SECTOR PROJECTS		
Darwin International Airport - stage 1 South Osgood Logistics development - showroom / warehouse complex	5.0	Q2 2016
Fannie Bay - Waratah Crescent - Pearl Retirement Village	5.0	Q2 2016
Homemaker Village - stage 7 - showroom and offices	19.0	Q2 2016
Stuart Park - 31 Margaret Street - complex of 10 apartments	2.5	Q2 2016
Winnellie - 75 Coonawarra Road - warehouse with ancillary office	2.0	Q2 2016
Winnellie - 80-82 Winnellie Road - Warehouse with showroom	2.0	Q2 2016
Casuarina - Charles Darwin University – Purple 3 for ITMS Precinct refurbishment	2.5	Q3 2016
Casuarina Shopping Square - Stage 2 of Master Plan	34.0	Q3 2016
Darwin CBD - 29 Daly Street - Array Apartments on Daly - multi storey building with 65 apartments	20.0	Q3 2016
Casuarina - Charles Darwin University – Improvements to Trades training Facilities	1.2	Q4 2016
Darwin CBD - 20 Harvey Street - Horizons on Harvey - 16 by 1 and 60 by 2 bedroom Multiple Dwellings and a shop/Office in a 13 Storey Building Plus 2 Levels of Basement Car Parking	23.0	Q4 2016
Darwin CBD - Harvey Street, Ryko Court, Barneson Street – lot 7278 (1) - La Vista apartments 63 units within 11 storeys	26.0	Q4 2016
Darwin Corporate Park - stages 1 and 2 - commercial office spaces	85.0	Q4 2016
Fannie Bay – Kurringal Flats redevelopment	TBA	Q4 2016
Berrimah - 11 Miles Road - 8 new offices and warehouses	4.0	TBA
Berrimah - 15 Mel Road - office and showroom complex	2.0	TBA
Milner Village Plaza - stages 2 – 4 including 54 units and commercial	26.0	TBA
Parap - The Avenue - Hastings over Mindil - Soul and Spirit Towers	270.0	TBA



Concepts: Casuarina Square Master Plan

PROPOSED

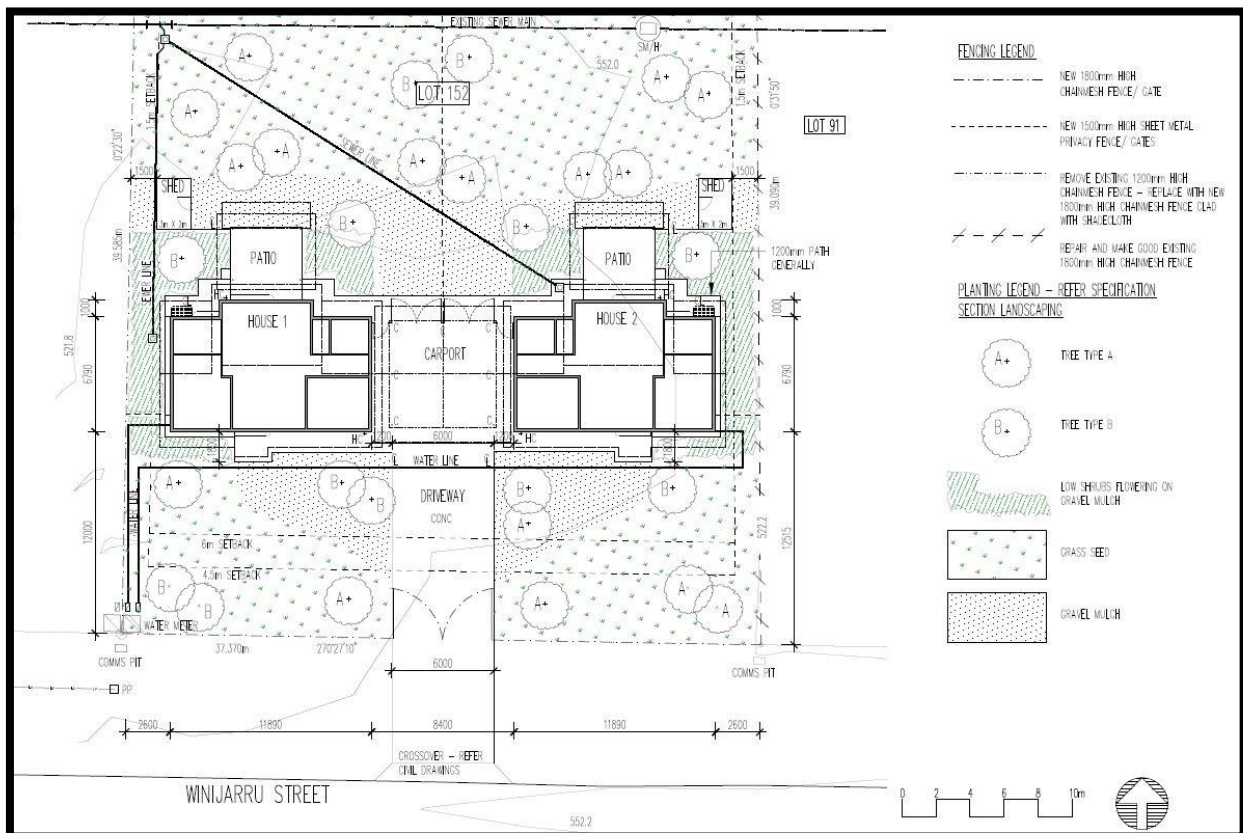
TERRITORY WIDE	Anticipated Start
NORTHERN TERRITORY GOVERNMENT PROJECTS	
Alekarenge, Alpuururulam, Alyangula, Borrooloola, Elliott, Gunbalanya, Jabiru, Kalkarindji, Kintore, Lajamanu, Ngukurr, Numbulwar, Nyirrpi, Papunya, Wadeye and Yuendumu - upgrading morgues in 16 communities	Q2 2016
DEFENCE PROJECTS	
National Aircraft Pavement Maintenance Program - including RAAF Base Darwin, Robertson Barracks and RAAF Base Tindal	2016
Robertson Barracks/RAAF Darwin/RAAF Tindal - Land 121 - unit sustainment facilities (weighbridge, loading ramp, fast fuel fill).	Q3 2016

CENTRAL AUSTRALIA	Anticipated Start
NORTHERN TERRITORY GOVERNMENT PROJECTS	
Alice Springs - East Side - 8 Harvey Place - new 4 court indoor netball stadium	Q1 2016
Alice Springs - Wills Terrace - Youth and Community Centre - upgrade existing and construct new Wellbeing Centre	Q1 2016
Ampilitwatja School - design and construct ablution block	Q1 2016
Braitling Primary School - new Preschool	Q1 2016
Central Australia Drag Racing Association - Infrastructure upgrades for Speedway and Go-Karts	Q1 2016
Kilgariff - extension of Stuart Highway cycle path	Q1 2016
Kintore Road - lift, gravel, resheet and drainage repairs - Mt Liebig Airstrip rip and re-compact	Q1 2016
Larapinta Drive - complete sealing to Mereenie Inner Loop	Q1 2016
Stuart Highway - improve safety at Willowra / Barrow Creek area - intersection upgrade	Q1 2016
Tanami Road - upgrade chainage 38.0 - 44.0 km	Q1 2016
Utopia - upgrade oval	Q1 2016
Arapunya Road - regravel and drainage chainage 54 - 72 at various points	Q2 2016
Artlunga Road - regravel chainage 20- 32 km	Q2 2016
Ghan Heritage Road - lift, resheet and drainage at chainage 0 - 40 km	Q2 2016
Kaltukatjara (Docke River) - new Morgue	Q2 2016
Kata Tjuta - Tjukururu Road - chainage 0.8 - 8.8 km - upgrade and seal	Q2 2016
Tjukururu Road Floodway - upgrade 5 floodways (stage 3)	Q2 2016
Plenty Highway - chainage 108 - 120 km - upgrade and seal (stage 2)	Q2 2016
Plenty Highway - chainage 120 - 124 km - upgrade and seal (stage 3)	Q2 2016
Stuart Highway - pavement rehabilitation and shoulder widening	Q2 2016



Concept: Alice Springs - East Side - 8 Harvey Place - new 4 court indoor netball stadium

CENTRAL AUSTRALIA (Cont.)	Anticipated Start
NORTHERN TERRITORY GOVERNMENT PROJECTS	
Alice Springs Supreme Court - fit out	Q3 2016
Larapinta - headworks connecting Albrecht Drive and Mparntwe Drive	Q3 2016
Larapinta - new road - Larapinta Loop Road	Q3 2016
Plenty Highway - chainage 140 - 146 km - upgrade and seal (stage 2)	Q3 2016
Simpson's Gap National Park - Larapinta Drive - design, documentation and construction of a 3 bedroom dwelling	Q3 2016
Mt John Valley - Flood Immunity - all-weather access	Q4 2016
Alice Springs - athletics track - upgrade Head Street	TBA
Alice Springs - Indigenous Cultural Centre - development	TBA
Alice Springs Transport Interchange - School bus interchange (via Memorial Drive)	TBA
Stuart Highway - reseal at various points between chainage 1342 - 1362 km	TBA
Government Employee Housing (GEH)	
Simpsons Gap - Government Employee Housing upgrades	Q1 2016
Ti Tree - construct Government Employee Housing - duplex	Q1 2016
Wilora - Government Employee Housing Upgrades	Q2 2016
Yuendumu - construct Government Employee Housing on lot 650B	Q2 2016
Atitjere - Government Employee Housing Upgrades	Q3 2016
Kaltukatjara (Docke River) - construct Government Employee Housing Lot 107	Q3 2016
Laramba - Government Employee Housing Upgrades	Q3 2016
Willowra - Government Employee Housing Upgrades	Q3 2016



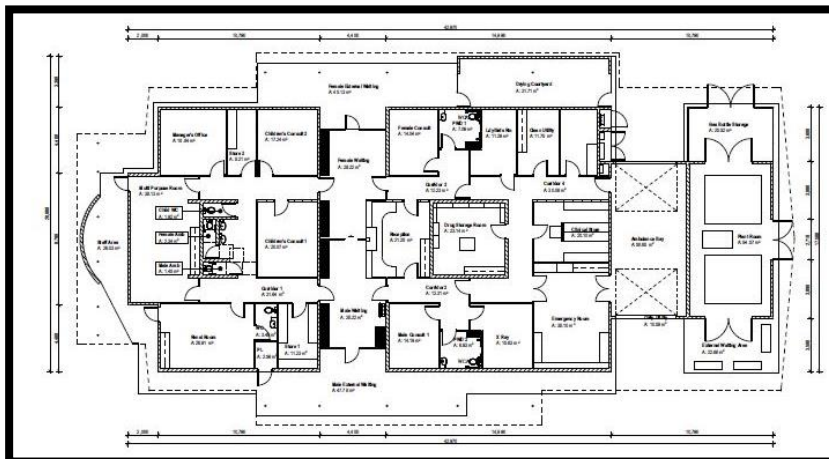
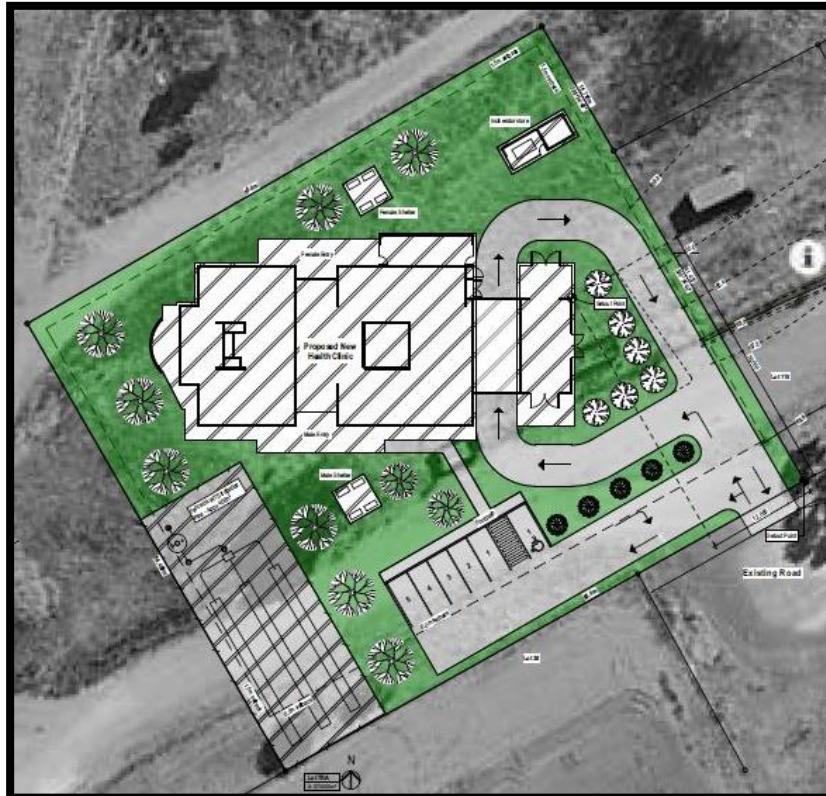
CENTRAL AUSTRALIA (Cont.)	Anticipated Start
Stronger Futures NT - Indigenous Housing (SFNT)	
Kintore - 38 remote housing upgrades	Q1 2016
Nyirripi - 43 remote housing upgrades	Q1 2016
COOPERATIVE PROJECTS	
Alice Springs Golf Club - new bowling green	Q1 2016
Finke, Imanpa, Minjilang, Mount Liebig and Wallace Rockhole - new base stations and upgraded base stations	2016
New Haven Wildlife Sanctuary - construction of feral cat fence - stage 1 (50 kilometres)	2016
New Haven Wildlife Sanctuary - construction of feral cat fence - stage 2	2017
Alcohol Mandatory Treatment Centre - construction of a purpose built facility	TBA



Concepts: Alice Springs - new lawn bowls facilities

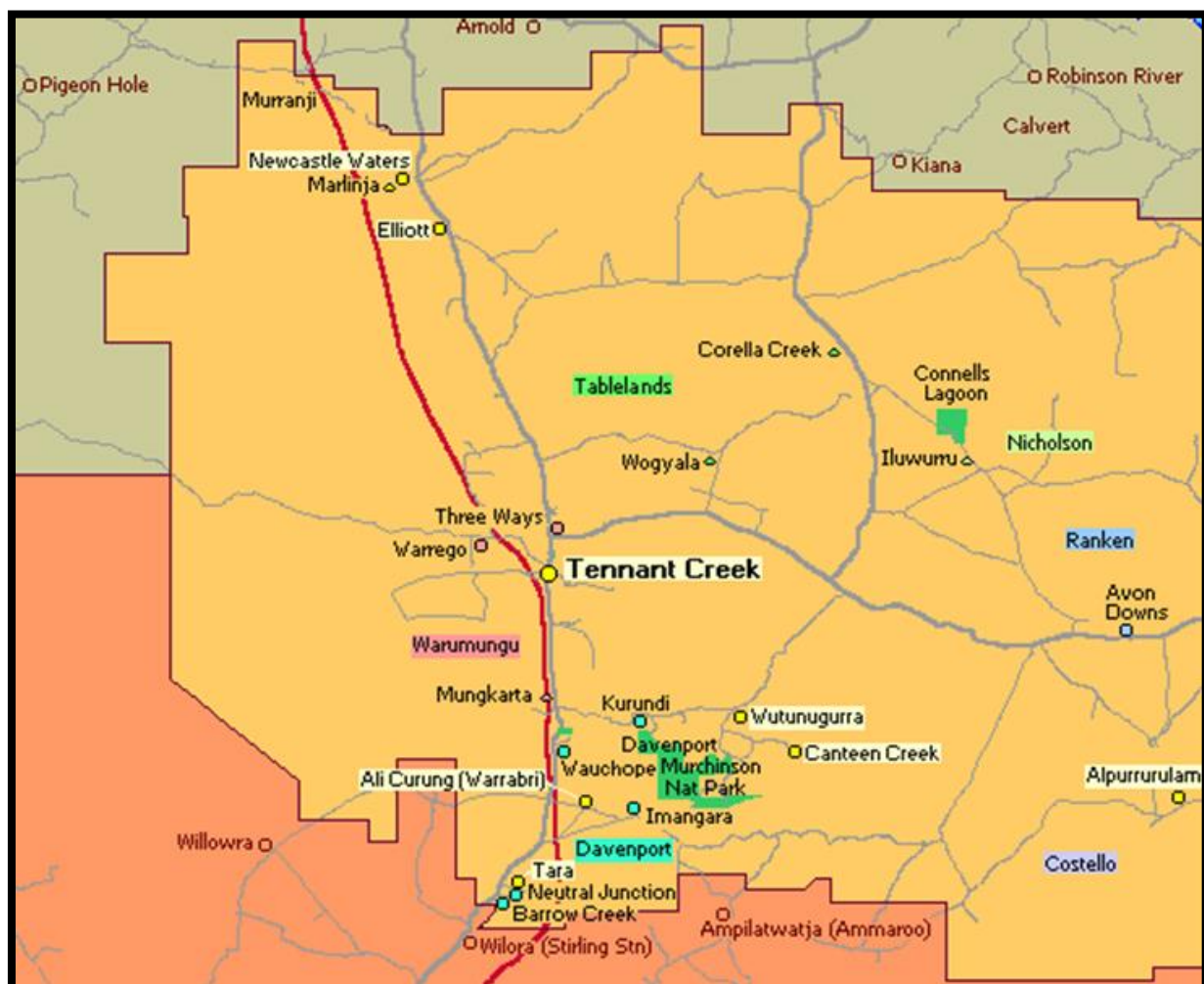
MINING AND PETROLEUM SECTOR PROJECTS	
Newmont Tanami - mine expansion including second decline and increased plant capacity	2016
Mt Peake Mine - stage 1 - develop new open pit mining and processing operation	Q3 2016
Nolan's Mine - open-cut mine, on-site preliminary processing to produce REO concentrate and off-site final processing plant	Q3 2016
Chandler Salt Mine - develop underground mine, on-site salt and fertilizer processing plant	Q2 2017
Jervois Mine - reopen old mine with 2 open-cut pits and on-site processing plant	Q3 2017
Mt Peake Mine - stage 2 - mine and production expansion	Q3 2022
Molyhil Mine - develop underground mine and on-site processing plant	TBA
PRIVATE SECTOR PROJECTS	
Charles Darwin University / Consortium of Catholic Schools – New Trades Training Centre	Q1 2016
Larapinta - 4 Wright Place - 2 by 3 bedroom multiple dwellings in a single storey	Q1 2016
Alice Springs - Whittaker Street Development - including new hotel and exhibition centre	TBA
Ciccione - 4 Smith Street - new workshop building	TBA
Gillen - 43 Larapinta Drive - triplex	TBA
Ross - Palm Court - multiple dwellings	TBA
Ross - 68 Palm Circuit - South Edge courtyard apartments	TBA

BARKLY REGION		Anticipated Start
NORTHERN TERRITORY GOVERNMENT PROJECTS		
Alekareng - Kinjurra Road (Ali Curung Access Road) shoulder upgrade		Q1 2016
Robinson River - health centre		Q1 2016
Tablelands Highway - strengthen 3 bridges - Playford, Boree and Whitehole		Q1 2016
Kurundi Road - lift, formation, stabilise and seal		Q2 2016
Wollogorang Road - Robinson and Calvert Crossings		Q2 2016
Borroloola - land release - 35 residential lots		2016



Plan: Robinson River Health Clinic

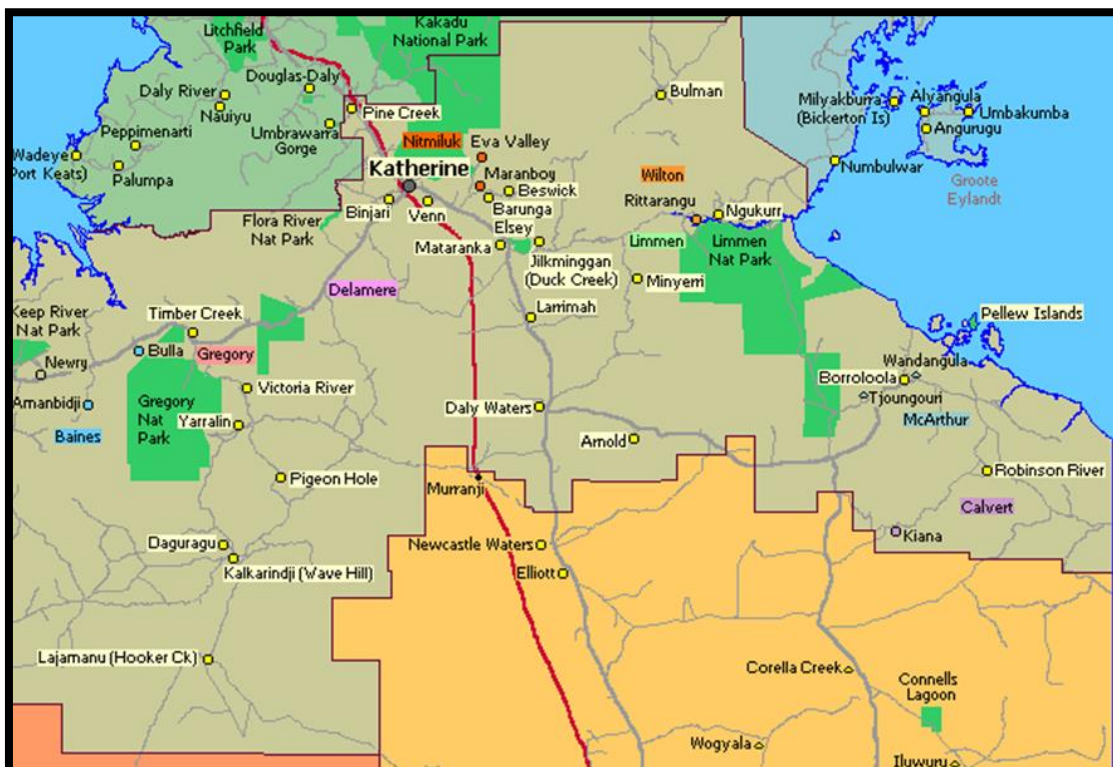
BARKLY REGION (Cont.)	Anticipated Start
Government Employee Housing (GEH)	
Ampilatwatja - Government Employee Housing upgrades	Q2 2016
Borrooloola - construct Government Employee Housing duplex	Q2 2016
Stronger Futures NT - Indigenous Housing (SFNT)	
Ampilatwatja - remote housing upgrades	Q1 2016
Tara - remote housing, new builds and upgrades	Q1 2016
COOPERATIVE PROJECTS	
Tennant Creek Speedway - new tower and club house and upgrade facilities	Q1 2016
MINING AND PETROLEUM SECTOR PROJECTS	
Northern Gas Pipeline (previously called North East Gas Interconnector) - 622 kilometre pipeline between Tennant Creek in the Northern Territory and Mount Isa in Queensland	2017
Ammaroo Phosphate Mine - new mine with open-cut pits, crushing and processing plant (3 options)	2017/18
Tennant Creek to Mount Isa - 600 kilometre rail link project	TBA
Wonarah Phosphate Mine - stage 1 - open-cut mine and on-site superphosphate processing	TBA
PRIVATE SECTOR PROJECTS	
Tennant Creek Airport - solar farm	2016
Tennant Creek Airport - commercial development	TBA



Map: Barkly Region



KATHERINE REGION	Anticipated Start
NORTHERN TERRITORY GOVERNMENT PROJECTS	
Bullita Access Road - install concrete invert at chainage 4.344 km	Q1 2016
Kalkarindji - Child and Family Centre	Q1 2016
Katherine East - stage 2 - land release	Q1 2016
Lajamanu - upgrade oval	Q1 2016
Stuart Highway - rest area at chainage 535.50 and 659.02 km	Q1 2016
Victoria Highway - rest area at chainage 378 km	Q1 2016
Carpentaria Highway - chainage 128 - 132.2 km	Q2 2016
Hodgson River Road - seal chainage 25.3 - 30.3 km	Q2 2016
Lajamanu Road - Kalkarindji to Lajamanu	Q2 2016
Ngukurr - Roper Highway - upgrade and seal from Fizzer Creek	Q2 2016
Stuart Highway - pavement rehabilitation and shoulder widening at chainage 243 - 247 km	Q2 2016
Stuart Highway - pavement rehabilitation and shoulder widening 278 - 280 km	Q2 2016
Katherine Ambulance Centre - headworks (flood mitigation)	Q3 2016
Katherine Region – upgrade Legune Access Road, as part of Project Sea Dragon	Q4 2016
Katherine - new ambulance centre	2016
Katherine High School - exterior upgrade	2016
Katherine Motor Sports Club - upgrade	2016
Mataranka - land release	2016
Pine Creek - land release	2016
Timber Creek - land release	2016
Victoria Highway - Little Horse and Big Horse Creek upgrade	2016
Leigh Creek - Katherine rural roads upgrade	TBA
Government Employee Housing (GEH)	
Kalkarindji - construct Government Employee Housing - 1 by 2 bedroom	Q1 2016
Ngukurr - construct Government Employee Housing on lot 252	Q1 2016
Ngukurr - construct Government Employee Housing on lot 251	Q2 2016
Ngukurr - Government Employee Housing upgrades	TBA
Stronger Futures NT - Indigenous Housing (SFNT)	
Katherine - 43 Victoria Highway - upgrades to 14 by 2 bedroom units	Q1 2016



Map: Katherine Region

KATHERINE REGION (Cont.)	Anticipated Start
Urban Public Housing (UPH)	
Katherine - 53 Martin Terrace - 6 Public Housing dwellings	Q1 2016
Katherine - 90 Acacia Drive - 6 Public Housing dwellings	Q1 2016



Concept: Public Housing – 53 Martin Crescent

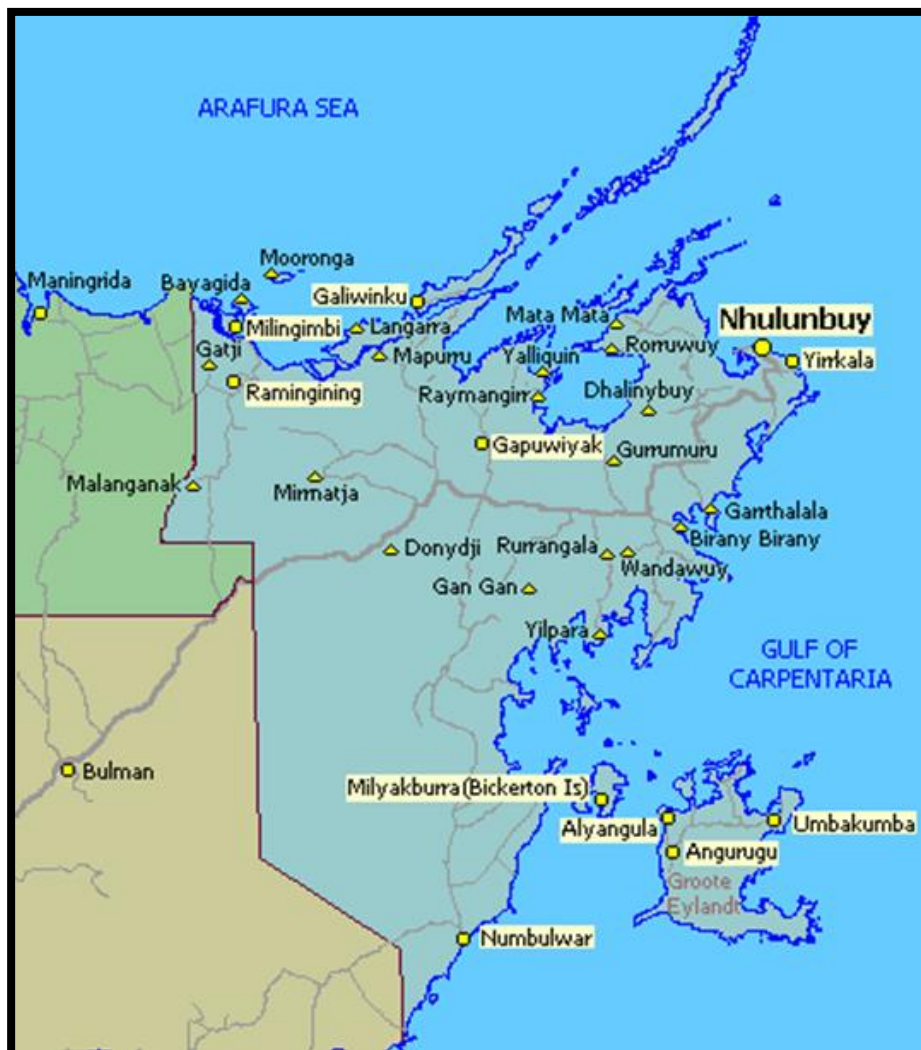


Concept: Public Housing – 90 Acacia Drive

KATHERINE REGION (Cont.)	Anticipated Start
DEFENCE PROJECTS	
RAAF Base Tindal - replacement aviation fire trucks	Q1 2016
Delamere Range redevelopment	2016
Project Growler - Delamere Range Facility - Infrastructure, comm's and guidance systems.	Q2 2017
Project Growler – Tindal - Infrastructure, comm's and guidance systems.	Q2 2017
RAAF Base Tindal - Air 5431 - Air Traffic Management and Control Systems - replace the existing Australian Defence air traffic system	2017
RAAF Base Tindal - AIR8000 - new air combat capability (JSF35)	2017
RAAF Base Tindal redevelopment	2017
MINING AND PETROLEUM SECTOR PROJECTS	
Mt Todd Mine - reopen open-cut pit with new on-site processing plant and power station	2017/18
COUNCIL PROJECTS (KATHERINE TOWN COUNCIL and ROPER GULF REGIONAL COUNCIL)	
Katherine - office and works depot	Q1 2016
Katherine - pavement repairs and resealing works	Q1 2016
Numbulwar - basketball court roof	Q1 2016
Numbulwar - recycling tip site	Q1 2016
Numbulwar - transport hub	Q1 2016
PRIVATE SECTOR PROJECTS	
Katherine - Charles Darwin University – Up Grade Fire Mains and Fire Fighting Infrastructure	Q1 2016
Project Sea Dragon - prawn farm development	2017
Katherine - 1 Paterson Court - 3 unit complex	TBA
Katherine - 13 Paterson Court - 4 unit complex	TBA
Katherine - 17 Paterson Court - 4 unit complex	TBA
Katherine - 2 Paterson Court - 3 unit complex	TBA
Katherine - 5 Paterson Court - 4 unit complex	TBA
Katherine - 9 Paterson Court - 4 unit complex	TBA
Katherine - Rundle Street - Parkview townhouses	TBA

EAST ARNHAM REGION	Anticipated Start
NORTHERN TERRITORY GOVERNMENT PROJECTS	
Galiwinku - remote health clinic	Q1 2016
Milingimbi School - demolish primary/language centre, construct new solar equipment enclosure, janitor shed and associated works	Q1 2016
Nhulunbuy - cyclone rectification works	Q1 2016
Nhulunbuy High School - replace all insulated chilled water pipes	Q1 2016
Nhulunbuy High School - residential boarding facilities - stage 1 - 40 bed residential facility and ancillary infrastructure	Q1 2016
Nhulunbuy Trade Training Centre - Maritime Shed	Q1 2016
Numbulwar - health clinic	Q1 2016
Ramingining School - demolish existing pre-school, classroom, canteen, ablution block and associated works	Q1 2016
Galiwinku - new Morgue	Q2 2016
Gove District Hospital - upgrade Emergency Department	Q2 2016
Milingimbi School - rebuild	Q2 2016
Nhulunbuy High School - residential boarding facilities - stage 2 - 40 bed residential facility	2017
Gapuwiyak - upgrade transport access - barge landing	TBA
Gove Rehabilitation Centre - alcohol and related services	TBA
Ramingining School - rebuild	TBA
Ramingining - upgrade transport access - barge landing	TBA
West Arnhem Aerodrome	TBA

EAST ARNHEM REGION (Cont.)	Anticipated Start
Government Employee Housing (GEH)	
Alyangula - construct Government Employee Housing	Q1 2016
Gapuwiyak - construct 2 bedroom blockwork duplex on lot 202	Q1 2016
Numbulwar - construct Government Employee Housing on lot 141	TBA
COOPERATIVE PROJECTS	
Galiwinku - new seal for Burmala Road (Buthan Road), reconstruct Wakirana Street (School Road) and reseal Gakudu Street (Clinic Road),	Q2 2016
MINING AND PETROLEUM SECTOR PROJECTS	
South 32 - GEMCO (Groote Eylandt) - establish new quarries on eastern leases to provide additional ore to existing processing plant	Q1 2017
COUNCIL PROJECTS (EAST ARNHEM REGIONAL COUNCIL)	
Galiwinku - lot 331 - administration building	TBA
Galiwinku - multipurpose hall for sport, recreation and cyclone shelter	TBA
Gapuwiyak - 13 Bambinarmirri Street - lot 95 - alterations and additions to existing child care centre	TBA
Milingimbi - lot 168 - new child care centre	TBA
PRIVATE SECTOR PROJECTS	
Galiwinku - Butan supermarket and caretakers residence	TBA



Map: East Arnhem Region

TOP END RURAL	Anticipated Start
NORTHERN TERRITORY GOVERNMENT PROJECTS	
Adelaide River region - Stuart Highway chainage 107.6 - 109.3 km and Strickland Road rehabilitation	Q1 2016
Arnhem Highway at Scott Creek	Q1 2016
Litchfield Park - Tolmer Falls - new picnic area, toilet facilities and half day walk	Q1 2016
Rum Jungle Road - widen shoulders and replace culverts	Q1 2016
Wadeye - upgrade oval lighting	Q1 2016
Bathurst Island - Wurrumiyanga (formerly Nguiu) - new Morgue	Q2 2016
Dundee Beach - boat ramp	Q2 2016
Kakadu - new all-weather crossing at Kambolgie Creek on Gimbat Road	Q2 2016
Maningrida - new Morgue	Q2 2016
Port Keats Road - flood immunity at Saddle Rail crossing	Q2 2016
Shady Camp - boat ramp	Q2 2016
Howard Springs - Activity Centre (headworks)	Q3 2016
Litchfield Park Road realignment including new bridge at Lower Finnis River	Q3 2016
Arnhem Link Road	TBA
Government Employee Housing (GEH)	
Gunbalanya - Government Employee Housing upgrade (package 1)	Q1 2016
Gunbalanya - Government Employee Housing upgrade (package 2)	Q1 2016
Maningrida - Government Employee Housing upgrades (400 series)	Q1 2016
Maningrida - Government Employee Housing upgrades (500-700 series)	Q1 2016
Milikapiti - Government Employee Housing upgrades	Q1 2016
Minjilang - Government Employee Housing upgrades	Q1 2016
Stronger Futures NT - Indigenous Housing (SFNT)	
Belyuen - remote housing upgrades	Q1 2016
Peppimenarti - remote housing, new builds and upgrades	Q1 2016
MINING AND PETROLEUM SECTOR PROJECTS	
Tom's Gully - reopen underground mine and on-site processing plant	Q3 2016
Kilimiraka - develop new mineral sands mine and processing plant - South West corner of Bathurst Island	2017
PRIVATE SECTOR PROJECTS	
Batchelor - Community Centre (museum) with ancillary restaurant / café	TBA
Jabiru - 43 Elsherana Road - Bus Depot with ancillary office and caretakers residence	TBA
Noonamah - Educational establishment with ancillary office and accommodation, and storage and use of heavy machinery and earth moving equipment associated with the teaching facility	TBA
Virginia - 30 Virginia Road - upgrade and extension to existing tavern	TBA
Wadeye - Showroom sales in a single storey building	TBA

PALMERSTON AND LITCHFIELD	Anticipated Start
NORTHERN TERRITORY GOVERNMENT PROJECTS	
Litchfield National Park - Buley Rockholes - site upgrades	Q1 2016
Roystonea Avenue - additional 3rd lane at the Gateway development	Q1 2016
Roystonea Avenue - Lambrick Avenue to Owston Avenue	Q1 2016
Yarrowonga - 12 Yarrowonga Road - Emergency Services Training Facility	Q1 2016
Bees Creek Preschool - extension	Q2 2016
Elrundie Avenue and Kirkland Drive - entry statement	Q2 2016
Yarrowonga Catchment - flood mitigation	Q2 2016
Coolalinga - Activity Centre (headworks)	Q3 2016
Roystonea Ave extension – Owston Ave to Channel Island Rd	Q4 2016
COOPERATIVE PROJECTS	
Palmerston - upgrade the Satellite City BMX track – install roof over facility and upgrade track	Q1 2016
Top End Moto Cross Club - provide track and facility lighting	Q1 2016
Wishart Road - stage 1 and 2 - development of industrial land	Q2 2016
Johnson - Farrar Villages - lot 11201 Angel Road - 81 by 2 bed and 4 by 3 bed apartments	2016

PALMERSTON AND LITCHFIELD (Cont.)	Anticipated Start
POWER WATER CORPORATION PROJECTS	
Jenkins Road Water Pump Station - construct pump station and chlorine buildings	Q1 2016
Hudson Creek - rebuild the CIPS to Hudson Creek 132kV transmission line including Elizabeth River Crossing	Q2 2016
Palmerston Eastern Trunk Sewer - replace DUPL 750 with 1050	Q2 2016
Palmerston - water supply improvements program	Q2 2018
DEFENCE PROJECTS	
Robertson Barracks - Land 1 - Land Force Mortar Replacement	Q1 2016
Robertson Barracks - replacement aviation fire trucks	Q1 2016
Shoal Bay Receiving Station - facility upgrade	Q2 2016
Robertson Barracks - Land 155 Enhanced Gap Crossing Capability	Q4 2016
Robertson Barracks - Land 200 Battlefield Communication Systems	TBA
MINING AND PETROLEUM SECTOR PROJECTS	
Middle Arm - stage 1- titanium and vanadium refinery	Q2 2017
Middle Arm - stage 2 - titanium and vanadium refinery	Q2 2020
COUNCIL PROJECTS (CITY OF PALMERSTON)	
Humpty Doo - Freds Pass Road / Arnhem Highway to Beaumont Road upgrade	Q1 2016
Middle Point - Anzac Parade - sealed section upgrade from Fog Dam turn off	Q1 2016
Pinelands - Baban Place - stormwater drainage upgrade	Q1 2016
Archer - landfill site rehabilitation	Q2 2016
Archer Waste Transfer Station - recycling centre access road and services	Q2 2016
Civic Plaza - re-roof section	Q2 2016
Marlow Lagoon - Flockhart Drive - pedestrian bridge	Q2 2016
Palmerston CBD - The Boulevard - Stage 2 France Drive to Roystonea Avenue, includes earthworks, pavement, asphalt, footpaths, lighting and associated services	Q2 2016
Temple Terrace / Emery Avenue - new roundabout	Q2 2016
PRIVATE SECTOR PROJECTS	
Johnston - Farrar Boulevard - MacKillop Catholic College - stage 4 -Seniors lab and new café	Q1 2016
Zuccoli - 15 Seafury Court - single storey duplex	Q1 2016
Zuccoli - 81 Crosby Street - 2 by 3 bedroom multiple dwellings in a single storey	Q1 2016
Palmerston CBD - 15 The Boulevard - 15 storey multiple use development in 3 towers (in 3 stages)	Q2 2016
Johnston - 3 Tarakan Court - 32 by 2 bedroom and 8 by 3 bedroom multiple dwellings in a four storey building	Q3 2016
Howard Springs - 85 Whitewood Road - place of worship	2016
Johnston - 12 George Street - 3 by 3 bedroom dwellings	2016
Johnston - 14 George Street - 3 by 3 bedroom dwellings	2016
Moulden - Tilston Avenue - Service station and shops	2016
Rosebery - 10 Browne Place - 4 townhouses	2016
Coolalinga - the Pavilions apartments	TBA
Durack - 3 Russell Street - 7 by 4 bedroom dwellings	TBA
Durack - Packard Avenue - Childcare / Medical precinct	TBA
Farrar - 1 Kettle Street - Terrace Garden Aged Care - 32 bed addition to existing supporting accommodation facility	TBA
Johnston - 1 George Street - 3 by 3 bedroom multiple dwellings in 2 by 2 storey buildings	TBA
Yarrowonga - 11 Georgina Crescent - 7 warehouses	TBA
Yarrowonga - 12 Georgina Crescent - showroom, warehouses and service station development	TBA
Yarrowonga - 15 Yarrowonga Road - new service station	TBA
Yarrowonga - 37 Toupein Road - warehouses with ancillary offices	TBA
Zuccoli - proposed lot 13262 - 3 by 3 bedroom multiple dwelling in a single storey building	TBA
Zuccoli - Radford Road - Subdivision to create 90 residential lots and 1 public open space lot and; a building setback and parking plan (Zuccoli Stage 5 A & B)	TBA
Zuccoli Parade - Temporary sales office and display village	TBA



Map of the Darwin, Palmerston & Litchfield and Top End Rural Regions

DARWIN ENVIRONS		Anticipated Start
NORTHERN TERRITORY GOVERNMENT PROJECTS		
Casuarina Coastal Reserve - new paths		Q1 2016
Chan Building - dedicated visual art gallery redevelopment		Q1 2016
Darwin Waterfront - additional pontoon to support Cruise operators		Q1 2016
Darwin Waterfront - shaded walk from the Cruise Ship terminal		Q1 2016
Darwin Waterfront - Stokes Hill Wharf refurbishment of dock 2 pontoons		Q1 2016



Concept: Chan Building - dedicated visual art gallery redevelopment (Atrium perspective)

DARWIN ENVIRONS (Cont.)	Anticipated Start
NORTHERN TERRITORY GOVERNMENT PROJECTS	
Dripstone Cliffs - Casuarina Coastal Reserve - upgrade	Q1 2016
Fannie Bay - Waratah Crescent - lot 8898 (Sports House site) - residential redevelopment	Q1 2016
Hidden Valley Motor Sports Complex - lighting for pit area	Q1 2016
Hidden Valley Motor Sports Complex - stage 1 replacement of water mains and systems	Q1 2016
Karama Primary School - refurbish block 1	Q1 2016
Millner - NT Archives Building fit out	Q1 2016
Museum and Art Gallery of the Northern Territory (MAGNT) - stage 1 - upgrade and replace heating, ventilation and air conditioning	Q1 2016
Rapid Creek - Casuarina Coastal Reserve upgrade - new picnic area	Q1 2016
Ringwood Road - upgrade to seal standard at chainage 0 - 45 km	Q1 2016
Stuart Highway and Bagot Road - right turn lane extension	Q1 2016
Coolalinga - Stuart Highway - outbound pavement rehabilitation at chainage 27.7 - 28.6 km	Q2 2016
Darwin CBD - Esplanade Boardwalk	Q2 2016
Darwin Waterfront - stage 2 - redevelopment including Navy fuel lines	Q2 2016
Ludmilla Catchment - flood mitigation	Q2 2016
Rapid Creek Catchment - stormwater management works	Q2 2016
Vanderlin Drive - duplication from Mueller Road to the McMillans Road roundabout	Q2 2016
Wulagi Primary School - refurbishment	Q2 2016
Darwin Waterfront - development - stage 2 - residential and commercial development	Q3 2016
Darwin Waterfront - Goyder's Park Development - stage 1 - commemorate the site of Darwin's first European settlement	Q3 2016
Museum and Art Gallery of the Northern Territory (MAGNT) - stage 2 - upgrade and replace heating, ventilation and air conditioning	Q3 2016
Wadham Lagoon - flood mitigation	2016
Museum and Art Gallery of the Northern Territory (MAGNT) - stage 3 - upgrade and replace heating, ventilation and air conditioning	Q3 2017
Museum and Art Gallery of the Northern Territory (MAGNT) - stage 4 - upgrade and replace heating, ventilation and air conditioning	Q3 2018
Darwin - land infill infrastructure	TBA
Rapid Creek Catchment - home fortification	TBA
Royal Darwin Hospital	
Royal Darwin Hospital - Emergency Department - reconfigure internal and external waiting area	Q1 2016
Royal Darwin Hospital - main ward block concrete spalling repairs	Q1 2016
Royal Darwin Hospital - reconfigure internal front entrance lobby including the construction of a patient transit lounge	Q1 2016
Royal Darwin Hospital - upgrade outpatients and public areas, including centre core and air conditioning upgrades	Q1 2016
Royal Darwin Hospital - upgrade fire doors and frames	Q2 2016
COOPERATIVE PROJECTS	
Marrara - tennis centre	Q4 2016
Berrimah Farm subdivision - 1000+ lots, schools, research precinct, retail centre, offices, bulky goods	2016
Marrara - lawn bowls facilities - upgrade	2016
Milner - Darwin Velodrome - upgrades to the fencing, lighting, refurbishing and surfacing of the track, bringing it up to competition standard	2016
East Arm Port - Marine Maintenance Facility - common user ship lift to support marine maintenance and servicing (stage 1)	2017
Darwin CBD - Barneson Avenue - link from Tiger Brennan Drive to Cavenagh Street	TBA
Hidden Valley Motor Sports Complex - replace speedway surface	TBA
Parap Pool Redevelopment - construction of a 50 metre competition standard pool	TBA
Stuart Park - Frances Bay - redevelopment - exciting waterfront precinct for tourists, locals and boaties	TBA
POWER WATER CORPORATION PROJECTS	
Darwin - Strauss water treatment plant	TBA

DARWIN ENVIRONS (Cont.)	Anticipated Start
DEFENCE PROJECTS	
RAAF Base Darwin - HV ring main	Q1 2016
RAAF Base Darwin - new facilities for P8 aircraft	2016
RAAF Base Darwin - Air 5431 - Air Traffic Management and Control Systems - replace the existing Australian Defence Air Traffic system	2017
Larrakeyah Barracks including NORFORCE redevelopment and HMAS Coonawarra – new wharf and in-ground services	Q1 2018
RAAF Base Darwin - base redevelopment	2018
HMAS Coonawarra Health Centre - Joint Health Command - permanent garrison health facilities upgrade	TBA
COUNCIL PROJECTS (CITY OF DARWIN)	
Coconut Grove - 550 metre coastal anti-erosion wall	Q1 2016
Darwin CBD - Smith Street intersection treatment	Q1 2016
Shoal Bay Waste Disposal site - leachate pond treatment system	Q1 2016
Darwin CBD - 103 Smith Street - alterations to service station to include restaurant and drive thru	TBA
Darwin Esplanade - community play space at Bicentennial Park	TBA
Fannie Bay – Dick Ward Drive - traffic lights at Turf Club entrance	TBA
PRIVATE SECTOR PROJECTS	
Berrimah - 19 Miles Road - complex of 12 warehouses	Q1 2016
Berrimah - 28 Miles Road - showroom/warehouse duplex	Q1 2016
Nightcliff - 65 Progress Drive - Serenity Views Apartments - stage 4	Q1 2016
Parap - 23 Gregory Street - Lot 2647 - 12 units within 3 storeys	Q1 2016
Darwin CBD - Lindsay Street - lot 1462 - 60 by 1 bed apartments	Q2 2016
Jingili - lot 4522 and 9718 McMillans Road - restaurant, shop, motel and apartments	Q2 2016
The Narrows - 335 Stuart Highway - Rubix Apartments - 54 by 2 bedroom multiple dwellings in 5 by 3 storey buildings	Q2 2016
Winnellie - Leprechaun Hotel - new 112 room development	Q2 2016
Darwin CBD - 145 Mitchell Street - 4 by 3 bedroom townhouses	2016
East Arm - 38 Dawson Street - Warehouse and ancillary office	2016
Nightcliff - 14 Grevillea Circuit - Elements on Grevillea - 9 by 2 bedroom units	2016
Stuart Park - 40 Gothenburg - Boehme Apartments - 12 by 2 bedroom apartments	2016
Fannie Bay - 16 Christie Street - 4 Balinese inspired townhouses	2016
Alawa - Young Crescent - 11 multiple dwellings	TBA
Berrimah - 1 Boulter Road - complex of 178 dwellings (89 duplexes)	TBA
Berrimah - 55 Boulter Road - 42 by 2 and 8 by 3 bedroom multiple dwellings in 12 by 1 and 13 by 2 storey buildings	TBA
Berrimah - lot 7290 Miles Road - office	TBA
Berrimah - lot 7291 Miles Road - 2 by warehouses with showrooms/office	TBA
Casuarina - 54 Bradshaw Terrace - 60 service apartments within 7 storeys	TBA
Darwin CBD - 13 Daly Street - 178 residential dwellings and 72 serviced apartments in a 29 storey building	TBA



Concept: Darwin CBD –
13 Daly Street

DARWIN ENVIRONS (Cont.)	Anticipated Start
PRIVATE SECTOR PROJECTS	
Darwin CBD - 166 Smith Street - 18 by 2 bedroom multiple dwellings in an 8 storey building	TBA
Darwin CBD - 3 Daly Street - 135 room hotel accommodation	TBA
Darwin CBD - 48 Cavenagh Street (GPO site) - hotel development - 143 serviced apartments	TBA
Darwin CBD - 85 Mitchell Street (old Hogs Breath site) - 200 room hotel/accommodation	TBA
Darwin CBD - Asti Motel - refurbishment of existing motel plus 24 by 2 and 12 by 1 bedroom serviced apartments	TBA
Darwin CBD - Asti Motel redevelopment - new 7 storey serviced apartment and 13 Storey Multiple Dwelling Buildings	TBA
Darwin CBD - Cavenagh Street - Darwin RSL Club - alterations and additions	TBA
Darwin CBD - Daly Street - Gateway Plaza Building - mixed use development	TBA
Darwin CBD - DoubleTree by Hilton Hotel Darwin - 100 room expansion	TBA
Darwin CBD - Frontier Hotel - 60 room expansion	TBA
Darwin CBD - Mitchell Street - Six Tanks Brew Co - microbrewery development	TBA
Darwin CBD - The Lenz - serviced apartments	TBA
Darwin International Airport Precinct - Neale Street - fast food precinct	TBA
Darwin International Airport Precinct - self storage facility	TBA
Darwin International Airport Precinct - South Osgood office precinct	TBA



Concept: Darwin Airport Developments – South Osgood Office Precinct

DARWIN ENVIRONS (Cont.)	Anticipated Start
PRIVATE SECTOR PROJECTS (Cont.)	
East Arm - 14 Casey Street - complex of 4 sheds with office	TBA
East Arm - 43 O'Sullivan Circuit - new waste storage and transfer facility	TBA
East Arm - 66 O'Sullivan Circuit - 2 storey office extension to an existing warehouse	TBA
Larrakeyah - shops and apartments	TBA
Marrara - Airport Gateway Hotel - Best Western 34 room expansion	TBA
Muirhead - 19 Lemke Street - 2 by 3 bedroom multiple dwellings in a single storey building	TBA
Muirhead - 24 Barratt Street - 2 by 4 bedroom multiple dwellings in a single storey building	TBA
Muirhead - 43 Mahoney Street - 2 by 3 bedroom multiple dwellings in 2 single storey buildings	TBA
Muirhead - 5 Bridge Street - 2 by 4 bedroom multiple dwellings in a single storey building	TBA
Muirhead - 60 Asche Street - 2 by 4 bedroom multiple dwellings in a single storey building	TBA
Nightcliff - Seabreeze apartments	TBA
Rapid Creek - 324 Casuarina Drive - 2 by 4 bedroom dwellings in a 2 storey building	TBA
Rapid Creek - 67 Ryland Road - 2 by 3 bedroom multiple dwellings in a single storey building	TBA
Stuart Park - 16 Eden Street - 3 detached dwellings	TBA
The Gardens - 4 Blake Street - 7 storey building of 118 apartments	TBA
Winnellie - 21 Swan Crescent - showroom and warehouse	TBA
Winnellie - 46 Coonawarra Road - new service station	TBA
Winnellie - 85 Coonawarra Road - new offices and showrooms	TBA

Construction Snapshot December 2015 Edition is published by the Department of Infrastructure.

Note: Dates, where shown, are depicted in calendar year quarters.

DISCLAIMER

Construction Snapshot is intended only to provide an overview of construction activity for major works over \$500 000 in the Northern Territory up to **31 December 2015**. While due care has been taken, this information is compiled from many sources and is subject to change. No reliance should be placed on any statement or information referred to herein without first making your own assessment and enquiry about the completeness, accuracy, reliability and status of the information and relevance to your circumstances. The Northern Territory of Australia gives no warranty or assurance of this information and accepts no direct, indirect or consequential liability arising from reliance on this information.

ISBN: 978-0-9873525-8-3

CONTACT

This publication is presently managed by the Major Projects, Procurement and Contract Services division of the Northern Territory Government's Department of Infrastructure.

T: +61 8 8999 4743

E: constructionsnapshot.ntg@nt.gov.au

Office location:

4th Floor, Highway House
PALMERSTON NT 0830

Postal address:

PO Box 61
PALMERSTON NT 0830

Web page:

<http://www.nt.gov.au/infrastructure/publications/snapshot/index.shtml>